



Liton[®]
L I G H T I N G

TRACK LIGHTING SYSTEMS

H-TYPE

J-TYPE

L-TYPE

2-CIRCUIT/2-NEUTRAL

3-CIRCUIT/1-NEUTRAL

TRACK GUIDE

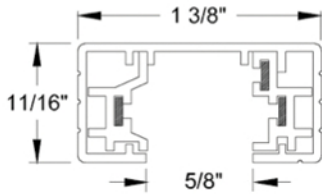
LITON has many different types of connector options. See chart below for options.

Part # for
Track Head

Standard
"H-TYPE"

1-CCT, 1NT, 1 GROUND
OR
2-CCT, 1NT, 1 GROUND

Line Art



Track
Channel Visuals



Track Head
Connector Visuals

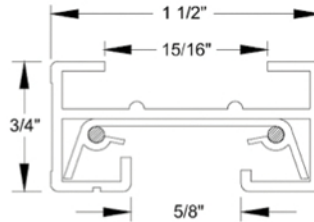


Tab Up: 1-CCT
Tab Down: 2-CCT



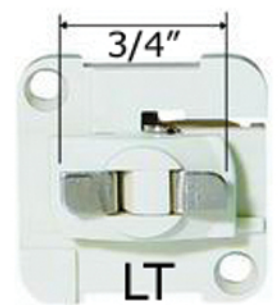
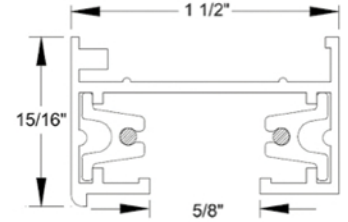
"-JNO" Extension
"J-TYPE"

1-CCT, 1NT



"-LTL" Extension
"L-TYPE"

1-CCT, 1NT



TRACK GUIDE

LITON also manufactures Specification Grade 120V-277V 2-Circuit/ 2-Neutral & 3-Circuit/1-Neutral track systems.

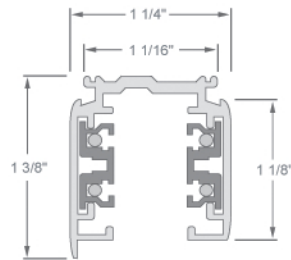
Part # for
Track Head

Surface Track

2C2N

3C1N

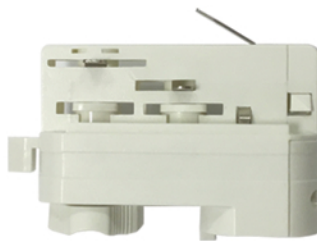
Line Art



Track
Channel Visuals



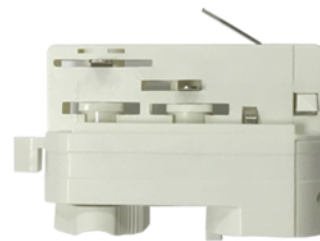
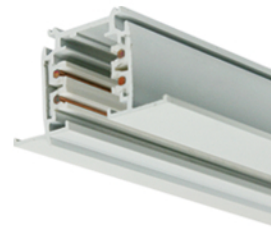
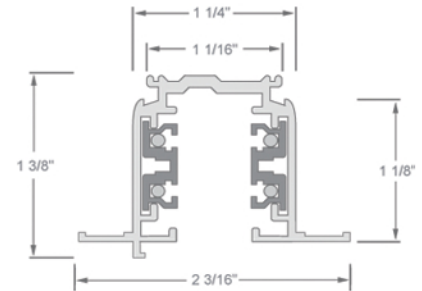
Track Head
Connector Visuals



Recessed Track

2C2N

3C1N



WHICH SETUP TO USE?

2-Circuit/2-Neutral

Denoted by the following prefixes and suffixes:

"LT2", "LTD2" and "-2C2N"

Used when independent neutral is needed per circuit.

3-Circuit/1-Neutral

Denoted by the following prefixes and suffixes:

"LT3", "LTD3" and "-3C1N"

Used when 3-circuits are needed on same track.