

LH47IC-113E / LH47IC-218E

6" SLOPED CEILING COMPACT FLUORESCENT HOUSINGS

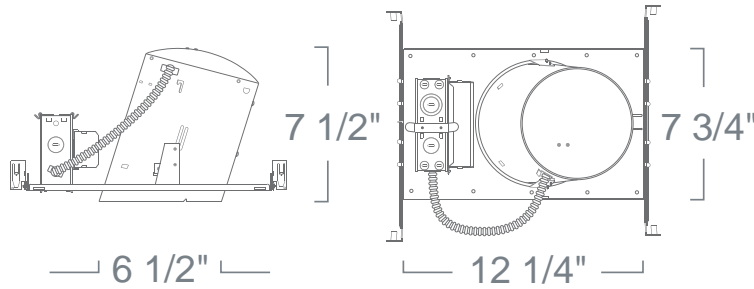


PROJECT INFORMATION

Type :

Project :

Catalog # :



For use with ceiling with 2/12 to 6/12 Pitch

FEATURE(S):



SPECIFICATION

Ceiling cut-out: 7 1/8"

CFL DTT
(1) 42W TTT

Application: General purpose recessed downlight housing for medium to high ceilings for residential and light commercial applications. A variety of trims, compatible styles and finishes are available to achieve the proper décor and illumination.

Housing: Pre-wired housing adjusts up to a 1 1/2" ceiling thickness. Integral thermal protector to guard against improper lamping and installation. Housing provides an adjustable socket plate which allows for use of different lamp types. Trim is secured with torsion wing springs/standard coil springs or serrated clips.

Mounting: Housing suitable for new construction installations only, supplied with (2) 24" adjustable hanger bars with 90 degrees repositioning ability. Hanger bars equipped with (nail-less installation) 3/4" serrated barbed studs and with captive nails, for faster and easier secure mounting in wood joists. Set-screws lock into position and prevent shifting after installation. Earthquake structural cable compatible for drop panel ceiling or any other mounting that requires direct support from structural ceilings. Housing for use in 2/12 to 6/12 pitch sloped ceilings.

Socket: Thermo-plastic socket UL Listed rated for high temperature and provides nickel plated contacts. Either accepts 2-Pin lamps for use with magnetic ballast or 4-Pin lamps with electronic ballast selection.

Junction Box: 16 gauge pre-wired galvanized steel Junction Box, 32 cubic-inch for a maximum of (8) #12 AWG wires. Furnished with (7) 3/4" and (4) Romex knock-outs. Strain clamps to install or remove covers for easy access and ground wire. Equipped with safety standard fitting for flex-conduit.

Insulation Contact: IC rated housing rated for direct contact with low to medium density loosefill blown and rolled insulation.

Safety Labels: UL/CUL listed for through-branch wiring (8) No.12 AWG 90°C and suitable for damp locations. NYC approved: Calendar #41937.

Emergency Option: Emergency back-up operates one lamp for a minimum of 90 minutes at 750 Lumens in case of power outage. Unit is remotely mounted. It includes battery, charger, and test switch with indicator light. Consult Factory for 1300 Lumen Package.

Label: U.L. Listed, E.T.L. Listed

COMPATIBILITY



LR903

SLOPED BAFFLE



LR916

SLOPED REFLECTOR

Note: Wattage limitations on compatible items must be met.

ORDERING

ORDERING EXAMPLE : LH47IC-113E120D

LH47IC	WATTAGE	BALLAST
LH47IC	-113E : (1) 13W	-27 : Electronic (120V/277V)
	-118E : (1) 18W	Blank: None
	-126E : (1) 26W	120D: Dimming 2-Wire (120V)
	-132E : (1) 32W	-EM : Emergency
	-213E : (2) 13W	UD : 0-10V Dimming (120V/277V)
	-218E : (2) 18W	