

LHR1299 - REMOTE HOUSING - NO TRANSFORMER

2" LOW VOLTAGE DOWNLIGHT HOUSINGS



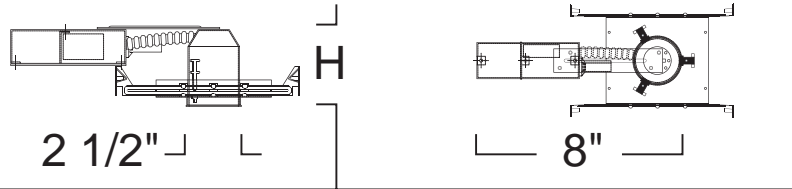
PROJECT INFORMATION

Type :

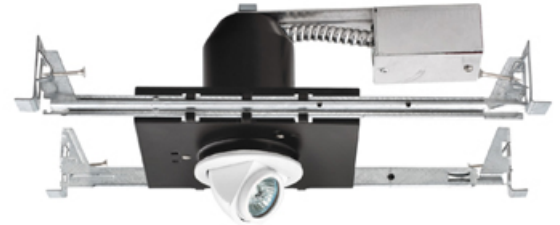
Project :

Catalog # :

FEATURE(S):



H: 3 1/2" (37W), 4 1/2" (50W)



SPECIFICATION

Ceiling cut-out: 2 3/4"

12V Out 37W Max MR11/MR16

Application: General purpose recessed downlight housing for low to medium height ceilings for residential and light commercial applications. A variety of trims, compatible styles and finishes are available to achieve the desired décor and illumination.

Housing: Pre-wired .05" baked enamel 1-piece drawn steel housing adjusts up to 1-1/4" ceiling thickness. Trim is secured with torsion wing springs.

Mounting: Housing suitable for existing or new construction installations, supplied with high tension remodeling clips, designed to secure the housing to an existing sheet rock ceiling for fast and easy installation.

Remote Transformer: For use with thermally protected electronic low voltage transformer (not supplied) to be mounted in remote location away from fixture.

Socket: 2-pin porcelain socket with aluminum heat sink plate. Lamp clips to trim to ensure proper and consistent positioning.

Junction Box: 16 gauge pre-wired aluminum Junction Box, suitable for through branch wiring for a maximum of (4) #12 AWG wires. Furnished with (2) 3/4" knock-outs. Screw-in or out covers for easy access and ground wire. Equipped with safety standard fitting for flex-conduit.

Insulation Contact: Non IC rated housing must be kept 3" from insulation.

Safety Labels: ETL/CETL listed. Suitable for damp locations. NYC approved: Calendar #41937.

Label: E.T.L. Listed

COMPATIBILITY

 LR1203 CROSS BLADE	 LR1211 MR11 REFLECTOR	 LR1213 MR11 BAFFLE
 LR1218 MICRO EYEBALL	 LR1219 MICRO PINHOLE W/ BLACK REFLECTOR	 LR1221 MR16 REFLECTOR
 LR1266 MICRO GIMBAL DIE- CAST	 LR1293 MR16 BAFFLE	

Note: Wattage limitations on compatible items must be met.

ORDERING

ORDERING EXAMPLE : LHR1299

LHR1299	WATTAGE	ACCESSORIES
LHR1299	Blank:37W -50 :50W	/LBL20 :20W Derating /LBL35 :35W Derating