

LRS990 - PINHOLE REFLECTOR

4" LINE VOLTAGE TRIMS

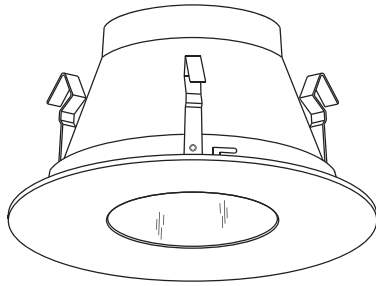


PROJECT INFORMATION

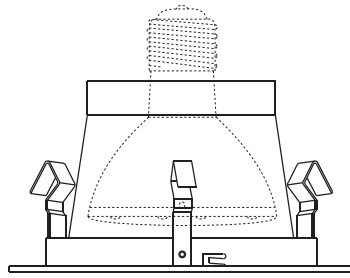
Type :

Project :

Catalog # :

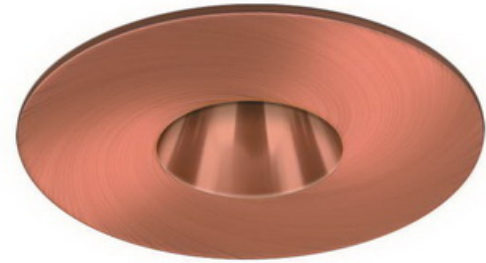


2 1/8"



4 7/8"

FEATURE(S):



SPECIFICATION

120V 50W Max R20/PAR20 MED E26

Application: This trim allows a defined location to be lit without affecting the surrounding surfaces while concealing the lamp image and providing a consistent ceiling appearance. The smaller the aperture the more confined the illumination.

Pinhole trims provide the type of precise illumination needed for artwork such as paintings and statues. They are also ideal for cozy environments like restaurants and living spaces where glare-free illumination is desired.

Aside from accent lighting, they can also be utilized for task lighting applications such as above tables, workspace, cabinetry, and other locations where a directed beam is desired.

Gasket: Supplied with gasket to prevent light leakage and unsightly heat streaks on ceiling surface.

Mounting Steel pressure springs mounted on trim to ensure positive retention inside housing.

Reflector Finish *: Spun Aluminum Reflector Available in White, Black, Clear, All Copper and Satin Haze.

Ring Finish: Die-Formed Aluminum Trim Ring Available in White, Black, Natural and Copper.

Label: U.L. Listed, E.T.L. Listed

COMPATIBILITY



LH99

STANDARD HOUSING



LH99IC

IC DOUBLE WALL HOUSING



LH99R

REMODEL HOUSING

Note: Wattage limitations on compatible items must be met.

ORDERING

ORDERING EXAMPLE : LRS990W

LRS990	REFLECTOR FINISH *	RING FINISH
LRS990	W :White	Blank :White
	B :Black	B :Black
	C :Clear	N :Natural
	CO :All Copper	CO :Copper
	S :Satin Haze	

* Finishes designated with "ALL" prior to the finish color come standard with a matching ring finish. Use "W" for White Ring.