

LSH99P - SHALLOW HOUSING 4" COMPACT FLUORESCENT HOUSINGS

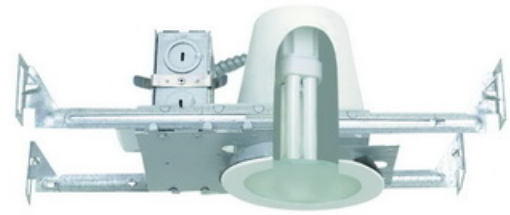
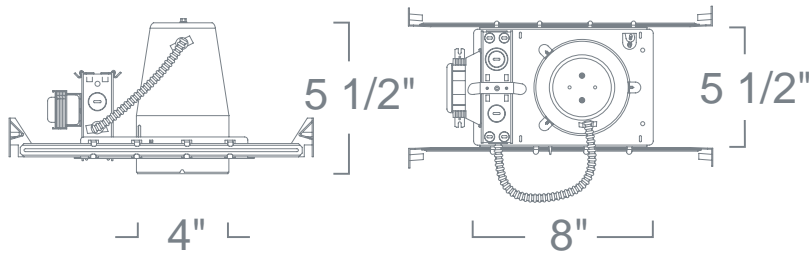


PROJECT INFORMATION

Type :

Project :

Catalog # :



SPECIFICATION

Ceiling cut-out: 4 1/2"

CFL 13W Max TTT

Application: General purpose recessed downlight housing for low to medium height ceilings for residential and light commercial applications. A variety of trims, compatible styles and finishes are available to achieve the proper décor and illumination.

Mounting: Housing suitable for new construction installations only, supplied with (2) 24" adjustable hanger bars with 90 degrees repositioning ability. Hanger bars equipped with nail-less install 3/4" serrated barbed studs and with captive nails, for faster and easier secure mounting in wood joists. Set-screws lock into position and prevent shifting after installation. Earthquake structural cable compatible for drop panel ceiling or any other mounting that requires direct support from structural ceilings.

Socket: Thermo-plastic socket UL Listed rated for high temperature and provides nickel plated contacts. Either accepts 2-Pin lamps for use with magnetic ballast or 4-Pin lamps with electronic ballast selection.

Insulation Contact: Non IC rated housing must be kept 3" from insulation. IC rated housing rated for direct contact with low to medium density loosefill blown and rolled insulation. For use with high density loose fill blown insulation, reduce rated lamp wattage accordingly (roughly %15-%20).

Airflow: Airtight option is designed to restrict air flow from room into plenums in compliance to the WSEC - Washington State Energy Code, (Less than 2.0 CFM -Cubic Feet per Minute). Complies to Title24 air flow requirements (Air-tight).

Safety Labels: UL/CUL listed for through-branch wiring (8) No.12 AWG 90°C and suitable for damp locations. NYC approved: Calendar #41937.

Safety Labels: ETL/CETL listed for through-branch wiring (8) No.12 AWG 90°C and suitable for damp locations. NYC approved: Calendar #41937.

Safety Labels: ETL/CETL listed for through-branch wiring (8) No.12 AWG 90°C and suitable for damp and wet locations (when use with appropriate trim designs). NYC approved: Calendar #41937.

ORDERING

ORDERING EXAMPLE : LSH99P-27

LSH99P	WATTAGE	BALLAST*	OPTIONS
LSH99P	Blank: 13W (Magnetic)	Blank: 120V	Blank: None
	E : 13W (Electronic)	-27 : 277V	-FS : Fuse
	ICAE : 13W IC-Airtight (Electronic)		-EM : Emergency

* 277V Not available for 13W magnetic.