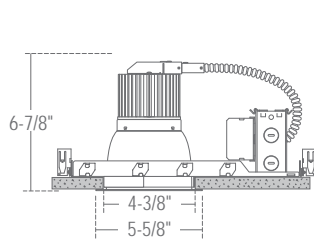


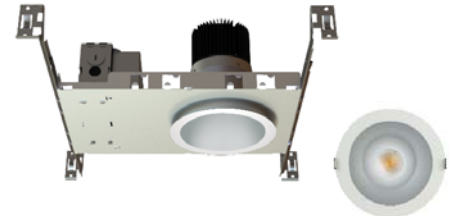
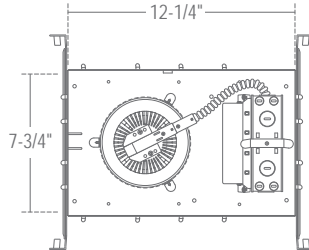
CH4C - 4" C-SERIES

(COB) CHIP ON BOARD BEAM CONTROL LED, NEW CONSTRUCTION
 1000LM - 2500LM (10W-30W)

- Economical 2-wire dimming option
- Multiple dimming options
- COB LED design allows for concentrated high CBCP beam
- All color temperatures standard
- 90CRI standard



Ceiling Cut-out: 4-7/8"
 Ceiling Thickness: 1" Max



ORDERING – Example: CH410UE-D10-EM/CR4LC30SW-B30-T27

CH4C10

Housing		Driver		J-Box		Reflector Finish		Beam Spread		CCT	
1000lm (10W)	CH4C10	0-10V Dimming	UE-D10	None	Blank	20° Spot	-B20	2700K, 90 CRI	-T27		
1400lm (15W)	CH4C15	GTD Device	UE-D10-GTD	Junction Box	-CHP	30° Narrow Flood	-B30	2700K, 97 CRI	T27-C97		
1900lm (20W)	CH4C20	120V ELV and Triac Dimming	-DIN	Junction Box (Chicago Plenum)		50° Wide Flood	-B50	3000K, 90 CRI	-T30		
2500lm (30W)	CH4C30	12W Emerg. Back-Up	UE-D10-EM			60° Wide Flood	-B60	3000K, 97 CRI	-T30-C97		
		25W Emerg. Back-Up	UE-D10-EMAC²			70° Very Wide Flood	-B70	3500K, 90 CRI	-T35		
		Lutron HighLume	UE-DHL					4000K, 90 CRI	-T40		
		347V	-347³					5000K, 80 CRI	-T50		
		0-10V Dimming (1%)	UE-D10P1³								
						Satin Haze Reflector/ /CR4LC30SW					
						White Finish					
						White Reflector/ /CR4LC30WW					
						White Finish					
						All Black /CR4LC30BB					
						Clear Specular /CR4LC30CW					
						Reflector/White Finish					

¹ All drivers are 120V/277V unless otherwise noted.
² (UE-D10-EMAC) is not available for CH4C30.
³ (-347), and (UE-D10P1) are not available for CH4C10.

COMPATABILITY

P-CR472

Wall Wash for 4"



SPECIFICATION

Application

Architectural/Commercial-grade recessed (COB) Chip on Board Beam Control LED allows for concentrated high center beam candlepower. Twist and lock TIR beam control optic is designed for easy field replacement of 20°, 30°, 50°, 60°, and 70° beam spread options

Mounting

Housing suitable for new construction installations only, supplied with (2) 24" adjustable hanger bars with 90° repositioning ability. Suitable for wood & metal joist support systems, and also drywall & T-bar ceilings. Hanger bars equipped with nail-less install 3/4" serrated barbed studs and captive nails, for faster and easier secure mounting in wood joists. Set-screws lock into position and prevent shifting after installation. Earthquake structural cable compatible for drop panel ceiling or any other mounting that requires direct support from structural ceilings.

Driver

120V/277V AC 50/60Hz Electronic Direct Current Class 2. Input current 0.50 Amps at 115VAC. Power Factor > 0.90. Operating Temperature: -20°C to +50°C / -4°F to +131°F. Accessible from above or below ceiling.

(UE-D10) 0-10V dimming works with most 5-wire, 0-10V dimmers. Factory qualified for use with Leviton IP710-DLZ.

(-DIN) dimming option smoothly dims down to 5% of initial light output with flicker-free performance. Works with standard 120V incandescent dimmers.

(UE-DHL) Lutron HiLume is a 3-wire driver that provides smooth, continuous 1% dimming for virtually any LED fixture.

(UE-ECO) Works with Lutron EcoSystem digital controls. Precision microprocessor control and integral thermal management deliver energy savings and extended product life.

(-347) is a 0-10V driver that takes 347V input.

(UE-D10P1) 0-10V dims down to 1% and works with most 120V/277V, 5-wire, 0-10V dimmers.

Emergency Options

Emergency LED Battery Back-up available, remotely mounted adjacently by the installer. When AC power fails, the device immediately switches to the emergency mode, operating the LEDs for a minimum of 90 minutes. Remote test switch and plate cover included. Optional Generator Transfer Device switches the driver to auxiliary generator power during the loss of normal AC power, (recommended for applications requiring individual circuit switching).

Color Temperature (CCT)

Available in 2700K, 3000K, 3500K, 4000K, 90 CRI; 5000K 80 CRI; 2700K and 3000K, 97 CRI.

Power Connection

Our LED lamp array is replaceable via our on board quick disconnect terminal. Meets CA Title 24 Requirements and other standards restricting the use of Medium Base or Bi-Pin Sockets.

Thermal Management

Heat dissipation facilitated by a large exposed integral aluminum heat sink to maximize heat dissipation in an open-air environment. The recommended ambient temperature should be below 35°C to achieve a minimum L70 life of 50,000 hours according to the LM80 standard.

Reflector

Field adjustable twist and lock reflector is easily removable to provide quick access to LED lamp array. Frosted polycarbonate lens pre-installed on reflector unifies diode sources and protects diodes from dust and particles from front of aperture. Optional reflector (-EMA) features integral EM switch for 12W emergency backup (UE-D10-EM).

Reflector Finish

The 1-piece, self-flanged, LED design enables a clean trim finish without a secondary trim ring. Heavy gauge aluminum reflector prevents ugly dents during shipping & installation. Deeply mounted singular LED provides 50° visual cutoff. Available in Satin Haze Reflector/White Finish, White Reflector/White Finish, All Black and Clear Specular Reflector White Ring.

Junction Box

16-gauge pre-wired galvanized steel Junction Box, 26 cubic-inch for a maximum of (8) #12 AWG wires. Furnished with (7) 1/2" knockouts. Strain clamps are included to install or remove covers for an easily accessed ground wire. (-CHP) option is Chicago Plenum, air-tight Junction Box.

Airflow

Our airtight reflector design is designed to restrict air flow from room into plenums in compliance to the WSEC - Washington State Energy Code, (Less than 2.0 CFM -Cubic Feet per Minute).

Certifications and Listings

cETLus listed to UL1598 and UL8750. Suitable for dry, damp and wet locations. NYC approved: Calendar #41937.

Caution

LITON recommends use of surge protectors on the power entering LED Housings. Surge damage is not covered by warranty. (+1KV). Fixtures must be grounded in accordance with national, state and/or local electrical codes. Failure to do so may result in serious personal injury.

Warranty

Covered by a 5-Year Warranty to be free of defects in materials and craftsmanship. Recommended for applications where ambient temperatures do not exceed 35°C, installations exceeding this temperature will result in reduced LED lamp life and a voided warranty.

SPECIFICATION

Application

Architectural/Commercial-grade recessed (COB) Chip on Board Beam Control LED allows for concentrated high center beam candlepower. Twist and lock TIR beam control optic is designed for easy field replacement of 20°, 30°, 50°, 60°, and 70° beam spread options.

Retrofit Mounting

Designed for use with existing 6" Architectural, Incandescent, Fluorescent, and Metal Halide Housings like LITON Brand LVH6, and LH600. Supplied with flexible metal conduit for connection to existing electrical junction box. You can use an existing frame mounting utilizing our standard, or heavy duty tension spring options. Fits Lithonia LP6U, Lightolier 1102P1, Gotham 6" AFV (CJ00263) Frame using PST041 clips. Consult factory for special mounting methods.

Use the -JB Junction box option for remodel applications that don't have an existing housing frame or an electrical junction box close by. The retaining spring clips option allows for mounting to wood or gypsum board ceilings without the need of a frame.

Driver

120V/277V AC 50/60Hz Electronic Direct Current Class 2. Input current 0.50 Amps at 115VAC. Power Factor > 0.90. Operating Temperature: -20°C to +50°C / -4°F to +131°F. Accessible from above or below ceiling.

(UE-D10) 0-10V dimming option works with most 5-wire, 0-10V dimmers. Factory qualified for use with Leviton IP710-DLZ.

(UE-D10-EM) 0-10V with 10W Emergency backup works with most 120V/277V, 5-wire, 0-10V dimmers.

(UE-D10-EMAC) 0-10V with 25W Emergency backup works with most 120V/277V, 5-wire, 0-10V dimmers.

(-DIN) dimming option smoothly dims down to 5% of initial light output with flicker-free performance. Works with standard 120V incandescent dimmers.

(-347) is a 0-10V driver that takes 347V input.

(UE-D10P1) 0-10V dims down to 1% and works with most 120V/277V, 5-wire, 0-10V dimmers.

(UE-DHL) Lutron HiLume is a 3-wire driver that provides smooth, continuous 1% dimming for virtually any LED fixture.

Emergency Options

Emergency LED Battery Back-up available, remotely mounted adjacently by the installer. When AC power fails, the device immediately switches to the emergency mode, operating the LEDs for a minimum of 90 minutes. Remote test switch and plate cover included.

Color Temperature

Available in 2700K, 3000K, 3500K, 4000K, 90 CRI; 5000K 80 CRI; 2700K and 3000K, 97 CRI.

Power Connection

Our LED lamp array is replaceable via our on board quick disconnect terminal. Meets CA Title 24 requirements and other standards restricting the use of Medium Base or Bi-Pin sockets.

Thermal Management

Heat dissipation facilitated by a large exposed integral aluminum heat sink to maximize heat dissipation in an open-air environment. The recommended ambient temperature should be below 35°C to achieve a minimum L70 life of 50,000 hours according to the LM80 standard.

Reflector

Field adjustable twist and lock reflector is easily removable to provide quick access to LED lamp array. Frosted polycarbonate lens pre-installed on reflector unifies diode sources and protects diodes from dust and particles from front of aperture.

Reflector Finish

The 1-piece, self-flanged, LED design enables a clean trim finish without a secondary trim ring. Heavy gauge aluminum reflector prevents ugly dents during shipping & installation. Deeply mounted singular LED provides 50° visual cutoff. Available in Satin Haze Reflector/White Finish, White Reflector/White Finish, All Black and Clear Specular Reflector White Ring.

Junction Box

(-JB) option is 18-gauge pre-wired aluminum Junction Box, 18 cubic-inch for a maximum of (6) #12AWG wires. Furnished with (2) 1/2" knockouts. Strain clamps are included to install or remove covers for an easily accessed ground wire. (-JB-CHP) option is Chicago Plenum, air-tight Junction Box.

Airflow

Our airtight reflector design is designed to restrict air flow from room into plenums in compliance to the WSEC - Washington State Energy Code, (Less than 2.0 CFM -Cubic Feet per Minute).

Certifications and Listings

cETLus listed. Suitable for dry, damp, and wet locations. NYC approved. Calendar #41937. Conforms to City of Chicago Environmental Air CCEA-200 with Section 18-27-300.22 and special requirements Section 14-20-210C-4. Assembled in USA.

Caution

Fixtures must be grounded in accordance with national, state and/or local electrical codes. Failure to do so may result in serious personal injury.

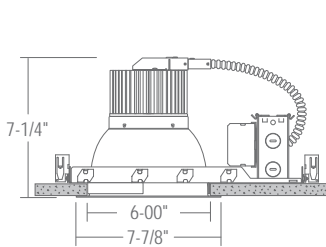
Warranty

Covered by a 5-Year Warranty to be free of defects in materials and craftsmanship. Recommended for applications where ambient temperatures do not exceed 35°C. Installations exceeding this temperature will result in reduced LED lamp life and a voided warranty.

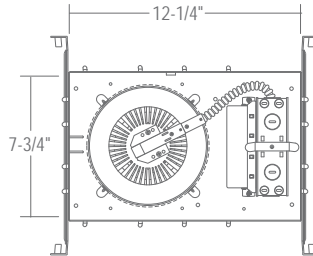
CH6C - 6" C-SERIES

(COB) CHIP ON BOARD BEAM CONTROL LED, NEW CONSTRUCTION
 1000LM - 3500LM (10W-40W)

- Economical 2-wire dimming option
- Multiple dimming options
- COB LED design allows for concentrated high CBCP beam
- All color temperatures standard
- 90CRI standard



Ceiling Cut-out: 6-3/8"
 Ceiling Thickness: 1" Max



ORDERING – Example: CH610UE-D10-EM/CR6LC40SW-B30-T27

CH6C10

Housing	Driver	J-Box	Reflector Finish	Beam Spread	CCT	
1000lm (10W) CH6C10	Driver ¹ 0-10V Dimming UE-D10 GTD Device UE-D10-GTD 120V ELV and Triac Dimming -DIN 12W Emerg. Back-Up UE-D10-EM 25W Emerg. Back-Up UE-D10-EMAC² Lutron HighLume UE-DHL⁴ 347V -347³ 0-10V Dimming (1%) UE-D10P1³	None	Reflector Finish Satin Haze Reflector/ White Ring /CR6LC40SW White Reflector/ White Ring /CR6LC40WW All Black /CR6LC40BB Clear Specular Reflector/White Ring /CR6LC40CW	20° Spot -B20	2700K, 90 CRI -T27	
1300lm (15W) CH6C15		Junction Box (Chicago Plenum)		Blank Blank	30° Narrow Flood -B30	2700K, 97 CRI -T27-C97
2000lm (20W) CH6C20				-CHP	40° Flood -B40	3000K, 90 CRI -T30
2600lm (30W) CH6C30					60° Wide Flood -B60	3000K, 97 CRI -T30-C97
3500lm (40W) CH6C40					75° Very Wide Flood -B75	3500K, 90 CRI -T35 4000K, 90 CRI -T40 5000K, 80 CRI -T50

¹ All drivers are 120V/277V unless otherwise noted.
² (UE-D10-EMAC) is not available for CH6C30, CH6C40.
³ (-347), and (UE-D10P1) are not available for CH6C10.
⁴ (UE-DHL) is not available for CH6C40.

COMPATABILITY

VR800 Round Vandal Resistant Kit for 6"	P-CR672SW Wall Wash for 6"	CR6-GSKT 6" Commercial Self-Adhesive Gasket
---	--------------------------------------	---



SPECIFICATION

Application

Architectural/Commercial-grade recessed (COB) Chip on Board Beam Control LED allows for concentrated high center beam candlepower. Twist and lock TIR beam control optic is designed for easy field replacement of 20°, 30°, 40°, 60°, and 75° beam spread options.

Mounting

Housing suitable for new construction installations only, supplied with (2) 24" adjustable hanger bars with 90° repositioning ability. Suitable for wood & metal joist support systems, and also drywall & T-bar ceilings. Hanger bars equipped with nail-less install 3/4" serrated barbed studs and captive nails, for faster and easier secure mounting in wood joists. Set-screws lock into position and prevent shifting after installation. Earthquake structural cable compatible for drop panel ceiling or any other mounting that requires direct support from structural ceilings.

Driver

120V/277V AC 50/60Hz Electronic Direct Current Class 2. Input current 0.50 Amps at 115VAC. Power Factor > 0.90. Operating Temperature: -20°C to +50°C / -4°F to +131°F. Accessible from above or below ceiling.

(UE-D10) 0-10V dimming works with most 5-wire, 0-10V dimmers. Factory qualified for use with Leviton IP710-DLZ.

(-DIN) dimming option smoothly dims down to 5% of initial light output with flicker-free performance. Works with standard 120V incandescent dimmers.

(UE-DHL) Lutron HiLume is a 3-wire driver that provides smooth, continuous 1% dimming for virtually any LED fixture.

(UE-ECO) Works with Lutron EcoSystem digital controls. Precision microprocessor control and integral thermal management deliver energy savings and extended product life.

(-347) is a 0-10V driver that takes 347V input.

(UE-D10P1) 0-10V dims down to 1% and works with most 120V/277V, 5-wire, 0-10V dimmers.

Emergency Options

Emergency LED Battery Back-up available, remotely mounted adjacently by the installer. When AC power fails, the device immediately switches to the emergency mode, operating the LEDs for a minimum of 90 minutes. Remote test switch and plate cover included. Optional Generator Transfer Device switches the driver to auxiliary generator power during the loss of normal AC power, (recommended for applications requiring individual circuit switching).

Color Temperature (CCT)

Available in 2700K, 3000K, 3500K, 4000K, 90 CRI; 5000K 80 CRI; 2700K and 3000K, 97 CRI.

Power Connection

Our LED lamp array is replaceable via our on board quick disconnect terminal. Meets CA Title 24 Requirements and other standards restricting the use of Medium Base or Bi-Pin Sockets.

Thermal Management

Heat dissipation facilitated by a large exposed integral aluminum heat sink to maximize heat dissipation in an open-air environment. The recommended ambient temperature should be below 35°C to achieve a minimum L70 life of 50,000 hours according to the LM80 standard.

Reflector

Field adjustable twist and lock reflector is easily removable to provide quick access to LED lamp array. Frosted polycarbonate lens pre-installed on reflector unifies diode sources and protects diodes from dust and particles from front of aperture. Optional reflector (-EMA) features integral EM switch for 12W emergency backup (UE-D10-EM).

Reflector Finish

The 1-piece, self-flanged, LED design enables a clean trim finish without a secondary trim ring. Heavy gauge aluminum reflector prevents ugly dents during shipping & installation. Deeply mounted singular LED provides 50° visual cutoff. Available in Satin Haze Reflector/White Finish, White Reflector/White Finish, All Black and Clear Specular Reflector White Ring.

Junction Box

16-gauge pre-wired galvanized steel Junction Box, 26 cubic-inch for a maximum of (8) #12 AWG wires. Furnished with (7) 1/2" knockouts. Strain clamps are included to install or remove covers for an easily accessed ground wire. (-CHP) option is Chicago Plenum, air-tight Junction Box.

Airflow

Our airtight reflector design is designed to restrict air flow from room into plenums in compliance to the WSEC - Washington State Energy Code, (Less than 2.0 CFM -Cubic Feet per Minute).

Certifications and Listings

cETLus listed to UL1598 and UL8750. Suitable for dry, damp and wet locations. NYC approved: Calendar #41937.

Caution

LITON recommends use of surge protectors on the power entering LED Housings. Surge damage is not covered by warranty. (+1KV). Fixtures must be grounded in accordance with national, state and/or local electrical codes. Failure to do so may result in serious personal injury.

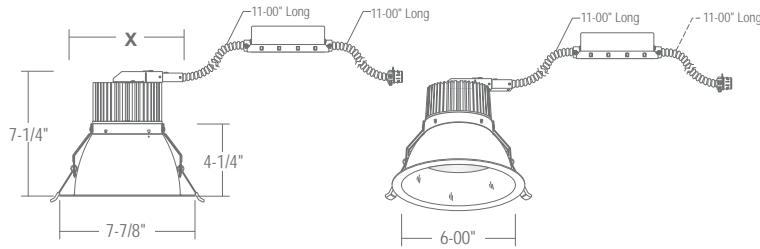
Warranty

Covered by a 5-Year Warranty to be free of defects in materials and craftsmanship. Recommended for applications where ambient temperatures do not exceed 35°C, installations exceeding this temperature will result in reduced LED lamp life and a voided warranty.

CRTR6LC - 6" C-SERIES

(COB) CHIP ON BOARD BEAM CONTROL LED, RETROFIT/REMODEL
 1000LM - 3500LM (10W-44W)

- Economical 2-wire dimming option
- Spring mounting included (for retrofits)
- Multiple dimming options
- COB LED design allows for concentrated high CBCP beam
- All color temperatures standard
- 90CRI standard



Ceiling Cut-Out X: = Min. 6-5/8", Max. 7-1/8", Ceiling Thickness: Min. 3/8", Max. 1-1/2"



ORDERING - Example: CRTR6LC10SW-B30-T27UE-D10-JB-CHP

CRTR6LC

Fixture	Lumens	Reflector Finish	Beam Spread	CCT	Dimming	J-Box
Fixture	Reflector Finish		CCT		Dimming ¹	J-Box
CRTR6LC	Satin Haze Reflector/ White Ring	SW	2700K, 90 CRI	-T27	0-10V Dimming	None
	White Reflector/ White Ring	WW	2700K, 97 CRI	-T27-C97	12W Emerg. Back-Up	Junction Box
	All Black	BB	3000K, 90 CRI	-T30	25W Emerg. Back-Up	Junction Box
	Clear Specular Reflector/White Ring	CW	3000K, 97 CRI	-T30-C97	120V ELV and Triac Dimming	(Chicago Plenum)
			3500K, 90 CRI	-T35	347V	
			4000K, 90 CRI	-T40	0-10V Dimming (1%)	
			5000K, 80 CRI	-T50	Lutron HighLume	
					-347³	
					UE-D10P³	
					UE-DHL⁴	
						Blank
						-JB
						-JB-CHP

Lumens	Beam Spread
1000lm (10W) 10	20° Spot -B20
1300lm (15W) 13	30° Narrow Flood -B30
2000lm (20W) 20	40° Flood -B40
2600lm (30W) 26	60° Wide Flood -B60
3500lm (44W) 35	75° Very Wide Flood -B75

¹ All drivers are 120V/277V unless otherwise noted.

² (UE-EMAC) is not available for CRTR6LC26 and CRTR6LC35.

³ (-347) and (UE-D10P1) are not available for CRTR6LC10.

⁴ (UE-DHL) is not available for CRTR6LC35.

COMPATABILITY

VR800
 Round Vandal Resistant
 Kit for 6"

P-CR672SW
 Wall Wash for 6"

CR6-GSKT
 6" Commercial
 Self-Adhesive Gasket



SPECIFICATION

Application

Architectural/Commercial-grade recessed (COB) Chip on Board Beam Control LED allows for concentrated high center beam candlepower. Twist and lock TIR beam control optic is designed for easy field replacement of 20°, 30°, 40°, 60°, and 75° beam spread options.

Retrofit Mounting

Designed for use with existing 6" Architectural, Incandescent, Fluorescent, and Metal Halide Housings like LITON Brand LVH6, and LH600. Supplied with flexible metal conduit for connection to existing electrical junction box. You can use an existing frame mounting utilizing our standard, or heavy duty tension spring options. Fits Lithonia LP6U, Lightolier 1102P1, Gotham 6" AFV (CJ00263) Frame using PST041 clips. Consult factory for special mounting methods.

Use the -JB Junction box option for remodel applications that don't have an existing housing frame or an electrical junction box close by. The retaining spring clips option allows for mounting to wood or gypsum board ceilings without the need of a frame.

Driver

120V/277V AC 50/60Hz Electronic Direct Current Class 2. Input current 0.50 Amps at 115VAC. Power Factor > 0.90. Operating Temperature: -20°C to +50°C / -4°F to +131°F. Accessible from above or below ceiling.

(UE-D10) 0-10V dimming option works with most 5-wire, 0-10V dimmers. Factory qualified for use with Leviton IP710-DLZ.

(UE-D10-EM) 0-10V with 10W Emergency backup works with most 120V/277V, 5-wire, 0-10V dimmers.

(UE-D10-EMAC) 0-10V with 25W Emergency backup works with most 120V/277V, 5-wire, 0-10V dimmers.

(-DIN) dimming option smoothly dims down to 5% of initial light output with flicker-free performance. Works with standard 120V incandescent dimmers.

(-347) is a 0-10V driver that takes 347V input.

(UE-D10P1) 0-10V dims down to 1% and works with most 120V/277V, 5-wire, 0-10V dimmers.

(UE-DHL) Lutron HiLume is a 3-wire driver that provides smooth, continuous 1% dimming for virtually any LED fixture.

Emergency Options

Emergency LED Battery Back-up available, remotely mounted adjacently by the installer. When AC power fails, the device immediately switches to the emergency mode, operating the LEDs for a minimum of 90 minutes. Remote test switch and plate cover included.

Color Temperature (CCT)

Available in 2700K, 3000K, 3500K, 4000K, 90 CRI; 5000K 80 CRI; 2700K and 3000K, 97 CRI.

Power Connection

Our LED lamp array is replaceable via our on board quick disconnect terminal. Meets CA Title 24 requirements and other standards restricting the use of Medium Base or Bi-Pin sockets.

Thermal Management

Heat dissipation facilitated by a large exposed integral aluminum heat sink to maximize heat dissipation in an open-air environment. The recommended ambient temperature should be below 35°C to achieve a minimum L70 life of 50,000 hours according to the LM80 standard.

Reflector

Field adjustable twist and lock reflector is easily removable to provide quick access to LED lamp array. Frosted polycarbonate lens pre-installed on reflector unifies diode sources and protects diodes from dust and particles from front of aperture.

Reflector Finish

The 1-piece, self-flanged, LED design enables a clean trim finish without a secondary trim ring. Heavy gauge aluminum reflector prevents ugly dents during shipping & installation. Deeply mounted singular LED provides 50° visual cutoff. Available in Satin Haze Reflector/White Finish, White Reflector/White Finish, All Black and Clear Specular Reflector White Ring.

Junction Box

(-JB) option is 18-gauge pre-wired aluminum Junction Box, 18 cubic-inch for a maximum of (6) #12AWG wires. Furnished with (2) 1/2" knockouts. Strain clamps are included to install or remove covers for an easily accessed ground wire. (-JB-CHP) option is Chicago Plenum, air-tight Junction Box.

Airflow

Our airtight reflector design is designed to restrict air flow from room into plenums in compliance to the WSEC - Washington State Energy Code, (Less than 2.0 CFM -Cubic Feet per Minute).

Certifications and Listings

cETLus listed. Suitable for dry, damp, and wet locations. NYC approved. Calendar #41937. Conforms to City of Chicago Environmental Air CCEA-200 with Section 18-27-300.22 and special requirements Section 14-20-210C-4. Assembled in USA.

Caution

Fixtures must be grounded in accordance with national, state and/or local electrical codes. Failure to do so may result in serious personal injury.

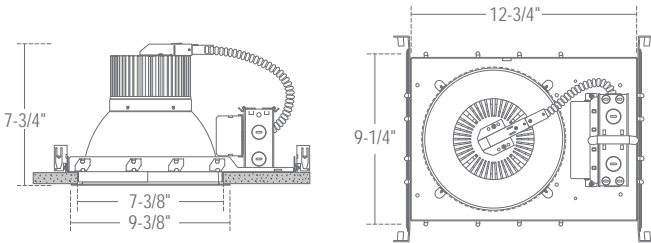
Warranty

Covered by a 5-Year Warranty to be free of defects in materials and craftsmanship. Recommended for applications where ambient temperatures do not exceed 35°C. Installations exceeding this temperature will result in reduced LED lamp life and a voided warranty.

CH8C - 8" C-SERIES

(COB) CHIP ON BOARD BEAM CONTROL LED, NEW CONSTRUCTION
1000LM - 3200LM (10W-40W)

- Economical 2-wire dimming option
- Multiple dimming options
- COB LED design allows for concentrated high CBCP beam
- All color temperatures standard
- 90CRI standard



Ceiling Cut-out: 7-15/16"
Ceiling Thickness: 1" Max



ORDERING – Example: CH810UE-D10-EM/CR8LC40SW-B30-T27

CH8C10

Housing	Driver	J-Box	Reflector Finish	Beam Spread	CCT
1000lm (10W) CH8C10	None Junction Box (Chicago Plenum) Driver ¹ 0-10V Dimming UE-D10 GTD Device UE-D10-GTD 120V ELV and Triac Dimming -DIN 12W Emerg. Back-Up UE-D10-EM 25W Emerg. Back-Up UE-D10-EMAC² Lutron HighLume UE-DHL 347V -347³ 0-10V Dimming (1%) UE-D10P1³	None Blank Junction Box -CHP (Chicago Plenum)	20° Spot 30° Narrow Flood 40° Flood 60° Wide Flood 75° Very Wide Flood	-B20 -B30 -B40 -B60 -B75	2700K, 90 CRI -T27
1500lm (15W) CH8C15					2700K, 97 CRI -T27-C97
2000lm (20W) CH8C20					3000K, 90 CRI -T30
2600lm (30W) CH8C30					3000K, 97 CRI -T30-C97
3200lm (40W) CH8C40					3500K, 90 CRI -T35 4000K, 90 CRI -T40 5000K, 80 CRI -T50
			Satin Haze Reflector/ White Ring	/CR8LC40SW	
			White Reflector/ White Ring	/CR8LC40WW	
			All Black	/CR8LC40BB	
			Clear Specular Reflector/White Ring	/CR8LC40CW	

¹ All drivers are 120V/277V unless otherwise noted.
² (UE-D10-EMAC) is not available for CH8C30 and CH8C40.
³ (-347), and (UE-D10P1) are not available for CH8C10.

COMPATABILITY

VR800
Round Vandal Resistant Kit for 8"

P-CR872SW
Wall Wash for 8"



SPECIFICATION

Application

Architectural/Commercial-grade recessed (COB) Chip on Board Beam Control LED allows for concentrated high center beam candlepower. Twist and lock TIR beam control optic is designed for easy field replacement of 20°, 30°, 40°, 60°, and 75° beam spread options.

Mounting

Housing suitable for new construction installations only, supplied with (2) 24" adjustable hanger bars with 90° repositioning ability. Suitable for wood & metal joist support systems, and also drywall & T-bar ceilings. Hanger bars equipped with nail-less install 3/4" serrated barbed studs and captive nails, for faster and easier secure mounting in wood joists. Set-screws lock into position and prevent shifting after installation. Earthquake structural cable compatible for drop panel ceiling or any other mounting that requires direct support from structural ceilings.

Driver

120V/277V AC 50/60Hz Electronic Direct Current Class 2. Input current 0.50 Amps at 115VAC. Power Factor > 0.90. Operating Temperature: -20°C to +50°C / -4°F to +131°F. Accessible from above or below ceiling.

(UE-D10) 0-10V dimming works with most 5-wire, 0-10V dimmers. Factory qualified for use with Leviton IP710-DLZ.

(-DIN) dimming option smoothly dims down to 5% of initial light output with flicker-free performance. Works with standard 120V incandescent dimmers.

(UE-DHL) Lutron HiLume is a 3-wire driver that provides smooth, continuous 1% dimming for virtually any LED fixture.

(UE-ECO) Works with Lutron EcoSystem digital controls. Precision microprocessor control and integral thermal management deliver energy savings and extended product life.

(-347) is a 0-10V driver that takes 347V input.

(UE-D10P1) 0-10V dims down to 1% and works with most 120V/277V, 5-wire, 0-10V dimmers.

Emergency Options

Emergency LED Battery Back-up available, remotely mounted adjacently by the installer. When AC power fails, the device immediately switches to the emergency mode, operating the LEDs for a minimum of 90 minutes. Remote test switch and plate cover included. Optional Generator Transfer Device switches the driver to auxiliary generator power during the loss of normal AC power, (recommended for applications requiring individual circuit switching).

Color Temperature (CCT)

Available in 2700K, 3000K, 3500K, 4000K, 90 CRI; 5000K 80 CRI; 2700K and 3000K, 97 CRI.

Power Connection

Our LED lamp array is replaceable via our on board quick disconnect terminal. Meets CA Title 24 Requirements and other standards restricting the use of Medium Base or Bi-Pin Sockets.

Thermal Management

Heat dissipation facilitated by a large exposed integral aluminum heat sink to maximize heat dissipation in an open-air environment. The recommended ambient temperature should be below 35°C to achieve a minimum L70 life of 50,000 hours according to the LM80 standard.

Reflector

Field adjustable twist and lock reflector is easily removable to provide quick access to LED lamp array. Frosted polycarbonate lens pre-installed on reflector unifies diode sources and protects diodes from dust and particles from front of aperture. Optional reflector (-EMA) features integral EM switch for 12W emergency backup (UE-D10-EM).

Reflector Finish

The 1-piece, self-flanged, LED design enables a clean trim finish without a secondary trim ring. Heavy gauge aluminum reflector prevents ugly dents during shipping & installation. Deeply mounted singular LED provides 50° visual cutoff. Available in Satin Haze Reflector/White Finish, White Reflector/White Finish, All Black and Clear Specular Reflector White Ring.

Junction Box

16-gauge pre-wired galvanized steel Junction Box, 26 cubic-inch for a maximum of (8) #12 AWG wires. Furnished with (7) 1/2" knockouts. Strain clamps are included to install or remove covers for an easily accessed ground wire. (-CHP) option is Chicago Plenum, air-tight Junction Box.

Airflow

Our airtight reflector design is designed to restrict air flow from room into plenums in compliance to the WSEC - Washington State Energy Code, (Less than 2.0 CFM -Cubic Feet per Minute).

Certifications and Listings

cETLus listed to UL1598 and UL8750. Suitable for dry, damp and wet locations. NYC approved: Calendar #41937.

Caution

LITON recommends use of surge protectors on the power entering LED Housings. Surge damage is not covered by warranty. (+1KV). Fixtures must be grounded in accordance with national, state and/or local electrical codes. Failure to do so may result in serious personal injury.

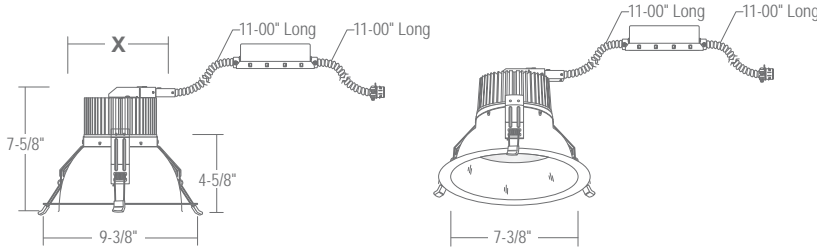
Warranty

Covered by a 5-Year Warranty to be free of defects in materials and craftsmanship. Recommended for applications where ambient temperatures do not exceed 35°C, installations exceeding this temperature will result in reduced LED lamp life and a voided warranty.

CRTR8LC - 8" C-SERIES

(COB) CHIP ON BOARD BEAM CONTROL LED, RETROFIT/REMODEL
1000LM - 3200LM (10W-40W)

- Economical 2-wire dimming option
- Spring mounting included (for retrofits)
- Multiple dimming options
- COB LED design allows for concentrated high CBCP beam
- All color temperatures standard
- 90CRI standard



Ceiling Cut-Out X: = Min. 8", Max. 8-5/8", Ceiling Thickness: Min. 3/8", Max. 1-1/2"



ORDERING – Example: CRTR8LC10SW-B40-T27UE-D10-JB-CHP

CRTR8LC

Fixture	Lumens	Reflector Finish	Beam Spread	CCT	Dimming	J-Box
CRTR8LC	1000lm (10W) 10 1500lm (15W) 15 2000lm (20W) 20 2600lm (30W) 26 3200lm (40W) 32	Satin Haze Reflector/ White Ring SW White Reflector/ White Ring WW All Black BB Clear Specular Reflector/White Ring CW	20° Spot -B20 30° Narrow Flood -B30 40° Flood -B40 60° Wide Flood -B60 75° Very Wide Flood -B75	2700K, 90 CRI -T27 2700K, 97 CRI -T27-C97 3000K, 90 CRI -T30 3000K, 97 CRI -T30-C97 3500K, 90 CRI -T35 4000K, 90 CRI -T40 5000K, 80 CRI -T50	0-10V Dimming UE-D10 12W Emerg. Back-Up UE-D10EM 25W Emerg. Back-Up UE-D10EMAC² 120V ELV and Triac Dimming -DIN 347V -347³ 0-10V Dimming (1%) UE-D10P1³ Lutron HighLume UE-DHL	None Blank Junction Box -JB Junction Box (Chicago Plenum) -JB-CHP

2020.09.02

¹ All drivers are 120V/277V unless otherwise noted.
² (UE-EMAC) is not available for CRTR8LC26 and CRTR8LC32.
³ (-347) and (UE-D10P1) are not available for CRTR8LC10.

COMPATABILITY

VR800
Round Vandal Resistant Kit for 8"

P-CR872SW
Wall Wash for 8"



SPECIFICATION

Application

Architectural/Commercial-grade recessed (COB) Chip on Board Beam Control LED allows for concentrated high center beam candlepower. Twist and lock TIR beam control optic is designed for easy field replacement of 20°, 30°, 40°, 60°, and 75° beam spread options.

Retrofit Mounting

Designed for use with existing 6" Architectural, Incandescent, Fluorescent, and Metal Halide Housings like LITON Brand LVH6, and LH600. Supplied with flexible metal conduit for connection to existing electrical junction box. You can use an existing frame mounting utilizing our standard, or heavy duty tension spring options. Fits Lithonia LP6U, Lightolier 1102P1, Gotham 6" AFV (CJ00263) Frame using PST041 clips. Consult factory for special mounting methods.

Use the -JB Junction box option for remodel applications that don't have an existing housing frame or an electrical junction box close by. The retaining spring clips option allows for mounting to wood or gypsum board ceilings without the need of a frame.

Driver

120V/277V AC 50/60Hz Electronic Direct Current Class 2. Input current 0.50 Amps at 115VAC. Power Factor > 0.90. Operating Temperature: -20°C to +50°C / -4°F to +131°F. Accessible from above or below ceiling.

(UE-D10) 0-10V dimming option works with most 5-wire, 0-10V dimmers. Factory qualified for use with Leviton IP710-DLZ.

(UE-D10-EM) 0-10V with 10W Emergency backup works with most 120V/277V, 5-wire, 0-10V dimmers.

(UE-D10-EMAC) 0-10V with 25W Emergency backup works with most 120V/277V, 5-wire, 0-10V dimmers.

(-DIN) dimming option smoothly dims down to 5% of initial light output with flicker-free performance. Works with standard 120V incandescent dimmers.

(-347) is a 0-10V driver that takes 347V input.

(UE-D10P1) 0-10V dims down to 1% and works with most 120V/277V, 5-wire, 0-10V dimmers.

(UE-DHL) Lutron HiLume is a 3-wire driver that provides smooth, continuous 1% dimming for virtually any LED fixture.

Emergency Options

Emergency LED Battery Back-up available, remotely mounted adjacently by the installer. When AC power fails, the device immediately switches to the emergency mode, operating the LEDs for a minimum of 90 minutes. Remote test switch and plate cover included.

Color Temperature (CCT)

Available in 2700K, 3000K, 3500K, 4000K, 90 CRI; 5000K 80 CRI; 2700K and 3000K, 97 CRI.

Power Connection

Our LED lamp array is replaceable via our on board quick disconnect terminal. Meets CA Title 24 requirements and other standards restricting the use of Medium Base or Bi-Pin sockets.

Thermal Management

Heat dissipation facilitated by a large exposed integral aluminum heat sink to maximize heat dissipation in an open-air environment. The recommended ambient temperature should be below 35°C to achieve a minimum L70 life of 50,000 hours according to the LM80 standard.

Reflector

Field adjustable twist and lock reflector is easily removable to provide quick access to LED lamp array. Frosted polycarbonate lens pre-installed on reflector unifies diode sources and protects diodes from dust and particles from front of aperture.

Reflector Finish

The 1-piece, self-flanged, LED design enables a clean trim finish without a secondary trim ring. Heavy gauge aluminum reflector prevents ugly dents during shipping & installation. Deeply mounted singular LED provides 50° visual cutoff. Available in Satin Haze Reflector/White Finish, White Reflector/White Finish, All Black and Clear Specular Reflector White Ring.

Junction Box

(-JB) option is 18-gauge pre-wired aluminum Junction Box, 18 cubic-inch for a maximum of (6) #12AWG wires. Furnished with (2) 1/2" knockouts. Strain clamps are included to install or remove covers for an easily accessed ground wire. (-JB-CHP) option is Chicago Plenum, air-tight Junction Box.

Airflow

Our airtight reflector design is designed to restrict air flow from room into plenums in compliance to the WSEC - Washington State Energy Code, (Less than 2.0 CFM -Cubic Feet per Minute).

Certifications and Listings

cETLus listed. Suitable for dry, damp, and wet locations. NYC approved. Calendar #41937. Conforms to City of Chicago Environmental Air CCEA-200 with Section 18-27-300.22 and special requirements Section 14-20-210C-4. Assembled in USA.

Caution

Fixtures must be grounded in accordance with national, state and/or local electrical codes. Failure to do so may result in serious personal injury.

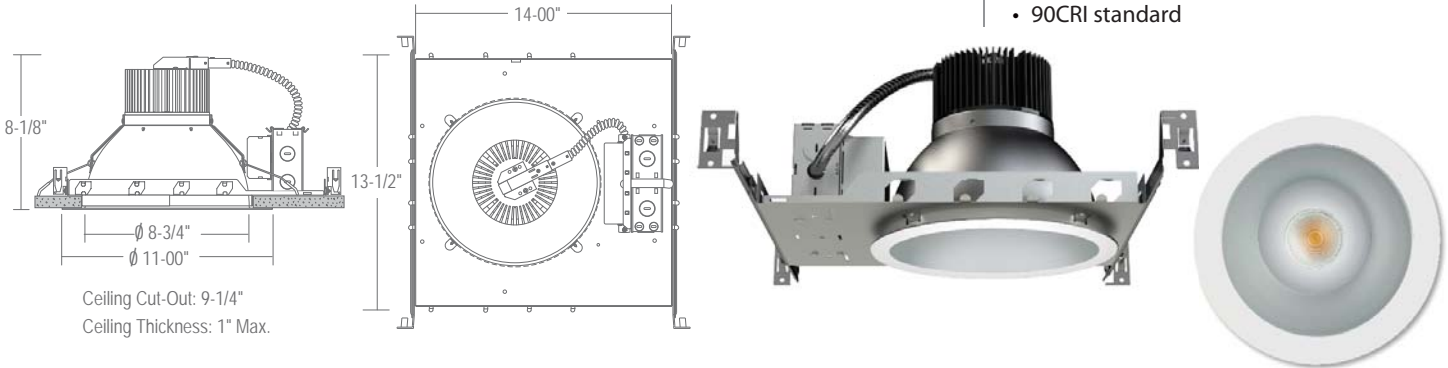
Warranty

Covered by a 5-Year Warranty to be free of defects in materials and craftsmanship. Recommended for applications where ambient temperatures do not exceed 35°C. Installations exceeding this temperature will result in reduced LED lamp life and a voided warranty.

CH9C - 9"/10" C-SERIES

(COB) CHIP ON BOARD BEAM CONTROL LED, NEW CONSTRUCTION
 1000LM - 3200LM (10W-40W)

- Economical 2-wire dimming option
- Multiple dimming options
- COB LED design allows for concentrated high CBCP beam
- All color temperatures standard
- 90CRI standard



ORDERING – Example: CH910UE-D10-EM/CR9LC40SW-B30-T27

CH9C10

Housing		Driver	J-Box	Reflector Finish	Beam Spread	CCT	
1000lm (10W)	CH9C10	None Junction Box (Chicago Plenum)	None Junction Box (Chicago Plenum)	Blank -CHP	20° Spot	-B20	
1500lm (15W)	CH9C15				30° Narrow Flood	-B30	
2000lm (20W)	CH9C20				40° Flood	-B40	
2600lm (30W)	CH9C30				60° Wide Flood	-B60	
3200lm (40W)	CH9C40				75° Very Wide Flood	-B75	
Housing		Driver ¹	J-Box	Reflector Finish	Beam Spread	CCT	
		0-10V Dimming	UE-D10	Satin Haze Reflector/	/CR9LC40SW	2700K, 90 CRI	-T27
		GTD Device	UE-D10-GTD	White Ring		2700K, 97 CRI	-T27-C97
		120V ELV and Triac Dimming	-DIN	White Reflector/	/CR9LC40WW	3000K, 90 CRI	-T30
		12W Emerg. Back-Up	UE-D10-EM	All Black	/CR9LC40BB	3000K, 97 CRI	-T30-C97
		25W Emerg. Back-Up	UE-D10-EMAC²	Clear Specular Reflector/White Ring	/CR8LC40CW	3500K, 90 CRI	-T35
		Lutron HighLume	UE-DHL⁴			4000K, 90 CRI	-T40
		347V	-347³			5000K, 80 CRI	-T50
		0-10V Dimming (1%)	UE-D10P1³				

¹ All drivers are 120V/277V unless otherwise noted.
² (UE-D10-EMAC) is not available for CH9C30. and CH9C40.
³ (-347), and (UE-D10P1) are not available for CH9C10.
⁴ (UE-DHL) is not available for CH9C40.

SPECIFICATION

Application

Architectural/Commercial-grade recessed (COB) Chip on Board Beam Control LED allows for concentrated high center beam candlepower. Twist and lock TIR beam control optic is designed for easy field replacement of 20°, 30°, 40°, 60°, and 75° beam spread options.

Mounting

Housing suitable for new construction installations only, supplied with (2) 24" adjustable hanger bars with 90° repositioning ability. Suitable for wood & metal joist support systems, and also drywall & T-bar ceilings. Hanger bars equipped with nail-less install 3/4" serrated barbed studs and captive nails, for faster and easier secure mounting in wood joists. Set-screws lock into position and prevent shifting after installation. Earthquake structural cable compatible for drop panel ceiling or any other mounting that requires direct support from structural ceilings.

Driver

120V/277V AC 50/60Hz Electronic Direct Current Class 2. Input current 0.50 Amps at 115VAC. Power Factor > 0.90. Operating Temperature: -20°C to +50°C / -4°F to +131°F. Accessible from above or below ceiling.

(UE-D10) 0-10V dimming works with most 5-wire, 0-10V dimmers. Factory qualified for use with Leviton IP710-DLZ.

(-DIN) dimming option smoothly dims down to 5% of initial light output with flicker-free performance. Works with standard 120V incandescent dimmers.

(UE-DHL) Lutron HiLume is a 3-wire driver that provides smooth, continuous 1% dimming for virtually any LED fixture.

(UE-ECO) Works with Lutron EcoSystem digital controls. Precision microprocessor control and integral thermal management deliver energy savings and extended product life.

(-347) is a 0-10V driver that takes 347V input.

(UE-D10P1) 0-10V dims down to 1% and works with most 120V/277V, 5-wire, 0-10V dimmers.

Emergency Options

Emergency LED Battery Back-up available, remotely mounted adjacently by the installer. When AC power fails, the device immediately switches to the emergency mode, operating the LEDs for a minimum of 90 minutes. Remote test switch and plate cover included. Optional Generator Transfer Device switches the driver to auxiliary generator power during the loss of normal AC power, (recommended for applications requiring individual circuit switching).

Color Temperature (CCT)

Available in 2700K, 3000K, 3500K, 4000K, 90 CRI; 5000K 80 CRI; 2700K and 3000K, 97 CRI.

Power Connection

Our LED lamp array is replaceable via our on board quick disconnect terminal. Meets CA Title 24 Requirements and other standards restricting the use of Medium Base or Bi-Pin Sockets.

Thermal Management

Heat dissipation facilitated by a large exposed integral aluminum heat sink to maximize heat dissipation in an open-air environment. The recommended ambient temperature should be below 35°C to achieve a minimum L70 life of 50,000 hours according to the LM80 standard.

Reflector

Field adjustable twist and lock reflector is easily removable to provide quick access to LED lamp array. Frosted polycarbonate lens pre-installed on reflector unifies diode sources and protects diodes from dust and particles from front of aperture. Optional reflector (-EMA) features integral EM switch for 12W emergency backup (UE-D10-EM).

Reflector Finish

The 1-piece, self-flanged, LED design enables a clean trim finish without a secondary trim ring. Heavy gauge aluminum reflector prevents ugly dents during shipping & installation. Deeply mounted singular LED provides 50° visual cutoff. Available in Satin Haze Reflector/White Finish, White Reflector/White Finish, All Black and Clear Specular Reflector White Ring.

Junction Box

16-gauge pre-wired galvanized steel Junction Box, 26 cubic-inch for a maximum of (8) #12 AWG wires. Furnished with (7) 1/2" knockouts. Strain clamps are included to install or remove covers for an easily accessed ground wire. (-CHP) option is Chicago Plenum, air-tight Junction Box.

Airflow

Our airtight reflector design is designed to restrict air flow from room into plenums in compliance to the WSEC - Washington State Energy Code, (Less than 2.0 CFM -Cubic Feet per Minute).

Certifications and Listings

cETLus listed to UL1598 and UL8750. Suitable for dry, damp and wet locations. NYC approved: Calendar #41937.

Caution

LITON recommends use of surge protectors on the power entering LED Housings. Surge damage is not covered by warranty. (+1KV). Fixtures must be grounded in accordance with national, state and/or local electrical codes. Failure to do so may result in serious personal injury.

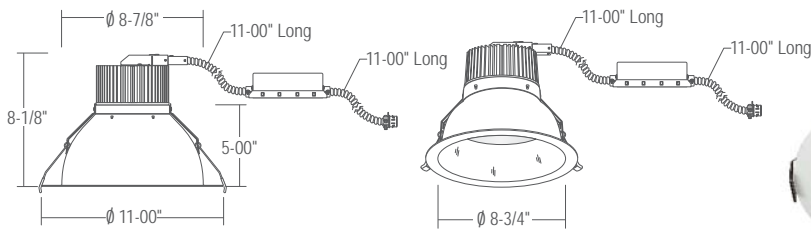
Warranty

Covered by a 5-Year Warranty to be free of defects in materials and craftsmanship. Recommended for applications where ambient temperatures do not exceed 35°C, installations exceeding this temperature will result in reduced LED lamp life and a voided warranty.

CRTR9LC - 9"/10" C-SERIES

(COB) CHIP ON BOARD BEAM CONTROL LED, RETROFIT/REMODEL
 1000LM - 3200LM (10W-40W)

- Economical 2-wire dimming option
- Spring mounting included (for retrofits)
- Multiple dimming options
- COB LED design allows for concentrated high CBCP beam
- All color temperatures standard
- 90CRI standard



Ceiling Cut-Out: Min. 8-7/8" Max. 10"
 Ceiling Thickness: Min. 3/8", Max. 2-1/2"



ORDERING – Example: CRTR9LC10SW-B40-T27UE-D10-JB-CHP

CRTR9LC	Lumens	Reflector Finish	Beam Spread	CCT	Dimming	J-Box
CRTR9LC	10	SW	B40	T27	UE-D10	None
	Satin Haze Reflector/ White Ring		2700K, 90 CRI		0-10V Dimming	Junction Box
	White Reflector/ White Ring		2700K, 97 CRI		12W Emerg. Back-Up	(Chicago Plenum)
	All Black		3000K, 90 CRI		25W Emerg. Back-Up	
	Clear Specular Reflector/White Ring		3000K, 97 CRI		120V ELV and Triac Dimming	
			3500K, 90 CRI		347V	
			4000K, 90 CRI		0-10V Dimming (1%)	
			5000K, 80 CRI		Lutron HighLume	

Lumens	Beam Spread
1000lm (10W) 10	20° Spot -B20
1500lm (15W) 15	30° Narrow Flood -B30
2000lm (20W) 20	40° Flood -B40
2600lm (30W) 26	60° Wide Flood -B60
3200lm (40W) 32	75° Very Wide Flood -B75

2020.09.02

¹ All drivers are 120V/277V unless otherwise noted.
² (UE-EMAC) is not available for CRTR9LC26 and CRTR9LC32.
³ (-347) and (UE-D10P1) are not available for CRTR9LC10.

SPECIFICATION

Application

Architectural/Commercial-grade recessed (COB) Chip on Board Beam Control LED allows for concentrated high center beam candlepower. Twist and lock TIR beam control optic is designed for easy field replacement of 25°, 40°, 60°, and 90° beam spread options.

Retrofit Mounting

Designed for use with existing 6" Architectural, Incandescent, Fluorescent, and Metal Halide Housings like LITON Brand LVH6, and LH600. Supplied with flexible metal conduit for connection to existing electrical junction box. You can use an existing frame mounting utilizing our standard, or heavy duty tension spring options. Fits Lithonia LP6U, Lightolier 1102P1, Gotham 6" AFV (CJ00263) Frame using PST041 clips. Consult factory for special mounting methods.

Use the -JB Junction box option for remodel applications that don't have an existing housing frame or an electrical junction box close by. The retaining spring clips option allows for mounting to wood or gypsum board ceilings without the need of a frame.

Driver

120V/277V AC 50/60Hz Electronic Direct Current Class 2. Input current 0.50 Amps at 115VAC. Power Factor > 0.90. Operating Temperature: -20°C to +50°C / -4°F to +131°F. Accessible from above or below ceiling.

(UE-D10) 0-10V dimming option works with most 5-wire, 0-10V dimmers. Factory qualified for use with Leviton IP710-DLZ.

(UE-D10-EM) 0-10V with 10W Emergency backup works with most 120V/277V, 5-wire, 0-10V dimmers.

(UE-D10-EMAC) 0-10V with 25W Emergency backup works with most 120V/277V, 5-wire, 0-10V dimmers.

(-DIN) dimming option smoothly dims down to 5% of initial light output with flicker-free performance. Works with standard 120V incandescent dimmers.

(-347) is a 0-10V driver that takes 347V input.

(UE-D10P1) 0-10V dims down to 1% and works with most 120V/277V, 5-wire, 0-10V dimmers.

(UE-DHL) Lutron HiLume is a 3-wire driver that provides smooth, continuous 1% dimming for virtually any LED fixture.

Emergency Options

Emergency LED Battery Back-up available, remotely mounted adjacently by the installer. When AC power fails, the device immediately switches to the emergency mode, operating the LEDs for a minimum of 90 minutes. Remote test switch and plate cover included.

Color Temperature (CCT)

Available in 2700K, 3000K, 3500K, 4000K, 90 CRI; 5000K 80 CRI; 2700K and 3000K, 97 CRI.

Power Connection

Our LED lamp array is replaceable via our on board quick disconnect terminal. Meets CA Title 24 requirements and other standards restricting the use of Medium Base or Bi-Pin sockets.

Thermal Management

Heat dissipation facilitated by a large exposed integral aluminum heat sink to maximize heat dissipation in an open-air environment. The recommended ambient temperature should be below 35°C to achieve a minimum L70 life of 50,000 hours according to the LM80 standard.

Reflector

Field adjustable twist and lock reflector is easily removable to provide quick access to LED lamp array. Frosted polycarbonate lens pre-installed on reflector unifies diode sources and protects diodes from dust and particles from front of aperture.

Reflector Finish

The 1-piece, self-flanged, LED design enables a clean trim finish without a secondary trim ring. Heavy gauge aluminum reflector prevents ugly dents during shipping & installation. Deeply mounted singular LED provides 50° visual cutoff. Available in Satin Haze Reflector/White Finish, White Reflector/White Finish, All Black and Clear Specular Reflector White Ring.

Junction Box

(-JB) option is 18-gauge pre-wired aluminum Junction Box, 18 cubic-inch for a maximum of (6) #12AWG wires. Furnished with (2) 1/2" knockouts. Strain clamps are included to install or remove covers for an easily accessed ground wire. (-JB-CHP) option is Chicago Plenum, air-tight Junction Box.

Airflow

Our airtight reflector design is designed to restrict air flow from room into plenums in compliance to the WSEC - Washington State Energy Code, (Less than 2.0 CFM -Cubic Feet per Minute).

Certifications and Listings

cETLus listed. Suitable for dry, damp, and wet locations. NYC approved. Calendar #41937. Conforms to City of Chicago Environmental Air CCEA-200 with Section 18-27-300.22 and special requirements Section 14-20-210C-4. Assembled in USA.

Caution

Fixtures must be grounded in accordance with national, state and/or local electrical codes. Failure to do so may result in serious personal injury.

Warranty

Covered by a 5-Year Warranty to be free of defects in materials and craftsmanship. Recommended for applications where ambient temperatures do not exceed 35°C. Installations exceeding this temperature will result in reduced LED lamp life and a voided warranty.