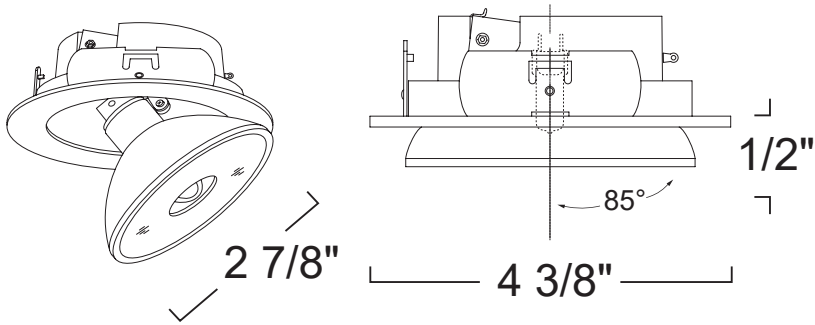


## LR1396 - T4 PULL DOWN 3" LOW VOLTAGE TRIMS



### SPECIFICATION

12V 50W Max T4/T3 GY6.35

**Application:** Provides flexibility and versatility by doubling as both a downlight and as an accent light. This trim has a larger degree of rotation resulting in both visual style and practical ergonomics.

**Socket:** 2 pin porcelain socket included with trim. Some wiring required.

**Gasket:** Supplied with gasket to prevent light leakage and unsightly heat streaks on ceiling surface.

**Lens Inclusion:** Clear glass protective safety lens included in packaging.

**Mounting:** Steel pressure springs mounted on trim to ensure positive retention inside housing.

**Adjustability** Lamp can be tilted 85° degrees vertically and rotated 358° degrees horizontally.

**Finish:** Die-Formed Construction Available in Black, Chrome and Gold.

**Label:** UL Listed, cETL Listed

### COMPATIBILITY

 <a href="#">LSH1399IC</a> SHALLOW IC HOUSING	 <a href="#">LSH1399</a> SHALLOW HOUSING	 <a href="#">LH1399</a> STANDARD HOUSING
 <a href="#">LH1399IC</a> IC DOUBLE WALL HOUSING	 <a href="#">LSH1399RE</a> SHALLOW REMODEL HOUSING	 <a href="#">LH1399R</a> REMODEL HOUSING

Note: Wattage limitations on compatible items must be met.

### FEATURE:



ORDERING EXAMPLE : LR1396C

LR1396	FINISH
LR1396	B :Black
	C :Chrome
	G :Gold

2023.04.14