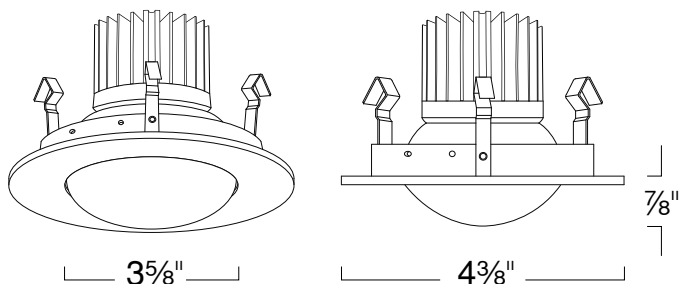


LRLD1342 - 3" DECO GLASS DOME (500LM) 3" LED TRIMS



SPECIFICATION

10W LED

Application: This miniature general purpose LED trim is perfect for low to medium height ceilings in residential and light commercial applications. Its small aperture makes it ideal for strategic placement where space is limited and energy savings is important. A variety of finishes are available to achieve a desired look.

Gasket: Supplied with gasket to prevent light leakage and unsightly heat streaks on ceiling surface.

Power Connection: LED heat sinked lamp module is replaceable via onboard quick exclusionary disconnect terminal. No tools required. Meets CA Title 24 Requirements and other standards restricting the use of Medium Base or Bi-Pin Sockets.

Lumen Maintenance: Minimum 35,000 hours L70 life based on ANSI TM-21 calculations from LM80 standardized test results.

Thermal Management: Effective thermal dissipation facilitated by integral cast-aluminum, finned heat sink design for maximum heat rejection to provide long LED life.

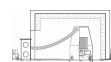
Warranty: Covered by a 3 Year Warranty to be free of defects in materials and craftsmanship. Recommended for applications where ambient temperatures do not exceed 35°C, installations exceeding this temperature will result in reduced LED lamp life and a voided warranty.

Safety Labels: ETL/cETL listed. Suitable for damp locations only.

Ring / Glass: Available in Clear Ring/ Frosted Glass, Natural Ring/ Frosted Glass and White Ring/ Frosted Glass.

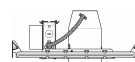
Color Temp: Available in 2700K (90CRI), 3000K (90CRI), 3500K (90CRI) and 4000K (90CRI).

COMPATIBILITY



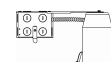
LHFRLD39C20

3" FIRE-RATED LED HOUSING (700LM)



LHLD39C20

3" LED NEW CONSTRUCTION HOUSING (700LM)



LHLD3R9C20

3" LED REMODEL HOUSING (700LM)

Note: Wattage limitations on compatible items must be met.

LED Details:

10W 500 + Lumens Delivered

Color Rendering Index (CRI): 90

Color Temperature: 3,000K

Lamp Equivalents: 50W MR16

Benefit:

- Up to 500 Lumens Delivered!
- Budget Friendly, specification quality performance
- Small aperture for hard to light spaces
- Singular diode, no multiple LEDs
- 90CRI standard for better color rendering

FEATURE:



ORDERING EXAMPLE : LRLD1342W-T40

LRLD1342	RING / GLASS	COLOR TEMP
LRLD1342	C :Clear Ring/ Frosted Glass	Blank :3000K (90CRI)
	N :Natural Ring/ Frosted Glass	-T27 :2700K (90CRI)
	W :White Ring/ Frosted Glass	-T35 :3500K (90CRI)
		-T40 :4000K (90CRI)

ID#: 3228