

LT8 : MINI UNIVERSAL

LINE VOLTAGE TRACK FIXTURES



- For use with standard H-Style 1 circuit and 2 circuit track



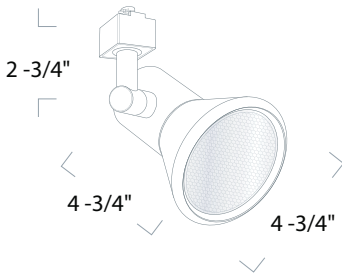
- L-shape steel bracket with single plastic tightening knob to rigidly maintain aiming angle



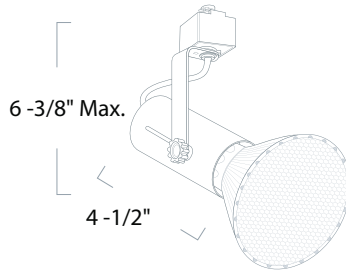
- Standard porcelain medium screw base socket



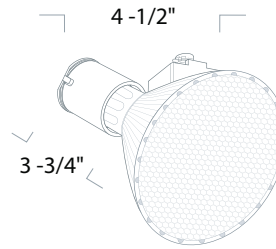
- Unique dual-rail yoke allows for cooler operation along with a less-obtrusive design



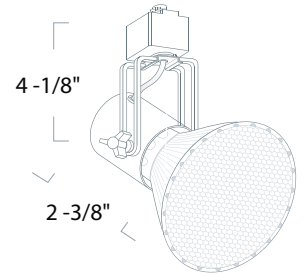
LT803



LT842



LT846



LT876

ORDERING : LT803B-2C2N

Fixture/Finish

Connector Options

Fixture/Finish	Connector Options
Mini Universal Closed 30 (75W) PAR30 with White finish	LT803W 1CCT/1NT Connector Blank
Adjustable Universal Flat Back (150W) PAR30/PAR38 with Black finish	LT842B 2CCT/2NT Connector -2C2N
Mini Universal Bare Socket (150W) PAR16/PAR20/PAR30 with Bright White finish	LT846W-2 3CCT/1NT Connector -3C1N
Mini Universal (75W) PAR20/PAR30 with Black finish	LT876B

COMPATIBLE ITEMS

LP913F
Line voltage ground canopy



LP971
Line voltage square canopy



PT57
Plug-in clamp adapter



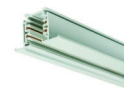
PT58
Line voltage clamp adapter



LP
1 CCT track channel



LP20
Recessed track



LPC
2 CCT Track channel



SPECIFICATION

Application

Mini Universal Closed 30:

For a contemporary European feel, these cone shaped fixtures offer an elegant design statement. Their lamp is fully enclosed allowing the cone shape to ensure no light leakage from back. The fully covered lamp allows for a simple and unobtrusive design. Comes with integral tightening knobs to ensure precise aiming for years to come.

Adjustable Universal (Flat Back):

This is an economy track head that features a design with minimal dimensions. It's universal platform allows for lighting a space with a wide variety of medium base PAR and general service A lamps and respective wattages up to 150W. Made of high quality formed aluminum, they are dependable for residential and light commercial applications, for worry free operation for years to come.

Mini Universal (Bare Socket):

This economical track head features a simple design with minimal dimensions that is perfect for out-of-sight installations like coves, sheds, garages, workshops and anyplace where the lumen output of the lamp is more important than the cosmetic design of the track head. Its universal medium base socket accepts most PAR and general service A-type lamps.

Mini Universal:

For a modern high-tech look these rigid steel yoked Lumina fixtures offer an elegant design statement. The unique dual-rail yoke allows for cooler operation along with a less-obtrusive design. They have integral tightening knobs to ensure precise aiming for years to come. The front-loading design allows for easy lamp maintenance.

Mounting:

Comes standard with 3-Wire H-Type thermo-plastic track connections. Fixture is factory preset for installation on single-circuit track. Contacts may be easily adjusted to install on two-circuit track via pull-up tab. J-Type and L-Type connections are available with extended lead times - consult factory.

Socket:

Standard porcelain medium screw base socket with high temperature leads

SPECIFICATION**Certifications and Listings**

UL listed.

Aiming Mechanism

Mini Universal Closed 30: Sidemount arm that completely conceals wiring. Internal mechanism rigidly maintains aiming angle.

Adjustable Universal (Flat Back): L-shape steel bracket with single plastic tightening knob to rigidly maintain aiming angle.

Mini Universal (Bare Socket): L-shape steel bracket with single plastic tightening knob to rigidly maintain aiming angle.

Mini Universal: Mounting yoke constructed of solid square steel wire. Provides full lateral and vertical aiming. Dual triangular plastic tightening knobs to rigidly maintain aiming angle.

Caution

Fixtures must be grounded in accordance with national, state and/or local electrical codes. Failure to do so may result in serious personal injury.

Warranty

Covered by a 3-Year Warranty to be free of defects in materials and craftsmanship. Recommended for applications where ambient temperatures do not exceed 35°C (95°F), installations exceeding this temperature will result in reduced LED lamp life and avoided warranty.