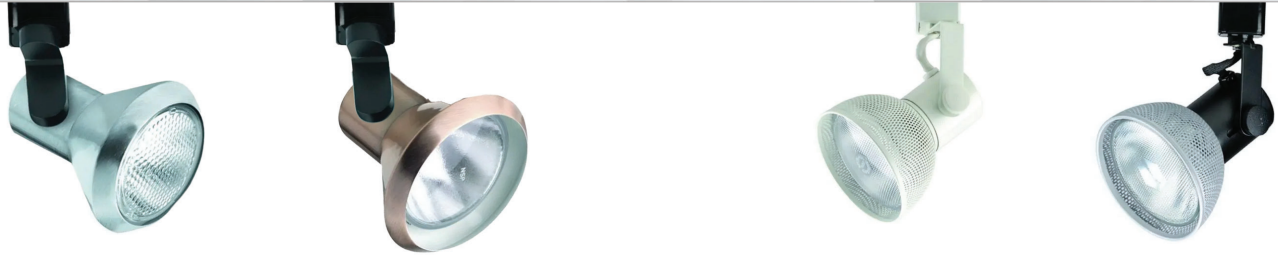


LT8 : EURO and MESH SHADE

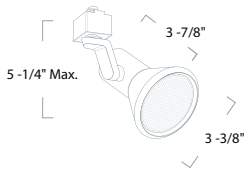
LINE VOLTAGE TRACK FIXTURES



• For use with standard H-Style
1 circuit and 2 circuit track



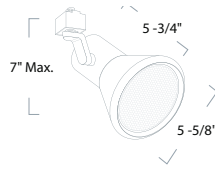
• Precision design ensures firm positioning



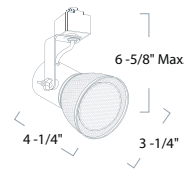
LT817



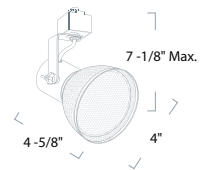
LT818



LT819



LT861



LT862

ORDERING : LT817B-2C2N

Fixture

Finish

Connector Options

Fixture	Finish	Connector Options
Euro Shade 20 (50W) PAR20	LT817	Black B
Euro Shade 30 (75W) PAR30	LT818	White W
Euro Shade 38 (150W) PAR38	LT819	Natural Metal N
Mesh Shade 20 (50W) PAR20	LT861 ²	Copper Metal CO ¹
Mesh Shade 30 (75W) PAR30	LT862 ³	
		1CCT/1NT Connector Blank
		2CCT/2NT Connector -2C2N
		3CCT/1NT Connector -3C1N

¹ Only available for LT818 and LT819.

² Finish only available for color Black and Natural Metal.

³ Finish only available for color Black.

COMPATIBLE ITEMS

LP913F
Line voltage
ground canopy



LP971
Line voltage
square canopy



PT57
Plug-in clamp
adapter



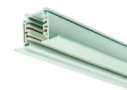
PT58
Line voltage
clamp adapter



LP
1 CCT track
channel



LP20
Recessed track



LPC
2 CCT Track
channel



SPECIFICATION**Application**

Euro Shade:	For a contemporary European feel, these cone shaped fixtures offer an elegant design statement. Their lamp is fully enclosed allowing the cone shape to ensure no light leakage from back. The fully covered lamp allows for a simple and unobtrusive design. Comes with integral tightening knobs to ensure precise aiming for years to come.
Mesh Shade:	Very popular in high-end residential and retail environments. These professional grade designer track fixtures are fully adjustable and their position locking knobs and front-loading designs make them a perfect fit for the most demanding applications. Durable high quality powder coat paint ensures long life with little color fatigue over the years.
Mounting:	Comes standard with 3-Wire H-Type thermo-plastic track connections. Fixture is factory preset for installation on single-circuit track. Contacts may be easily adjusted to install on two-circuit track via pull-up tab. J-Type and L-Type connections are available with extended lead times - consult factory.
Socket:	Standard porcelain medium screw base socket with high temperature leads

Certifications and Listings

UL listed.

Aiming Mechanism

EURO SHADE: For versatile aiming adjustment. Internal mechanism rigidly maintains aiming angle.

MESH SHADE: Polycarbonate arm with single plastic tightening knob to rigidly maintain aiming angle.

Caution

Fixtures must be grounded in accordance with national, state and/or local electrical codes. Failure to do so may result in serious personal injury.

Warranty

Covered by a 3-Year Warranty to be free of defects in materials and craftsmanship. Recommended for applications where ambient temperatures do not exceed 35°C (95°F), installations exceeding this temperature will result in reduced LED lamp life and avoided warranty.