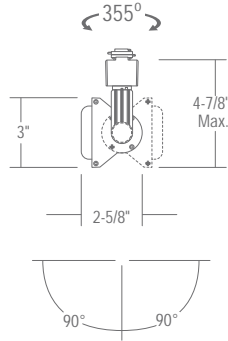
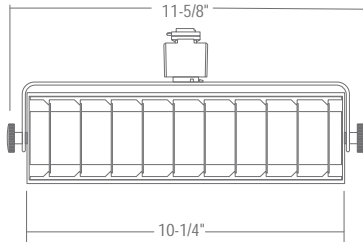
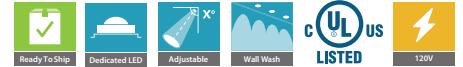


## LTD5120 : LINEAR LED WALL WASH 1400LM (20W)

- High-Output LED Delivers 1,400+ Lumens
- Produces Even, Scallop-free Wall Wash
- For use with standard H-Style 1 circuit and 2 circuit track
- Incandescent Dimming
- Precision design ensures firm positioning
- Highly adjustable, 355° Rotation/0°-90° Gimbal
- Lockable tilt










### ORDERING – Example: LTD5120B-T35



Fixture	Finish	Track Option	Color Temperature	Accessories
1400lm (20W) <b>LTD5120</b>	Black <b>B</b> White <b>W</b>	1 & 2-Circuit/1-Neutral <b>Blank</b> 2-Circuit/2-Neutral <b>-2C2N</b> 3-Circuit/1-Neutral <b>-3C1N</b>	3500K (90CRI) <b>-T35</b> 4000K (90CRI) <b>-T40</b> ColorSelect 3000K/3500K/4000K (90CRI) <b>-TS354</b>	No Louver <b>Blank</b> Louver <b>-LVR</b>

### COMPATIBILITY

LP913F	LP971	PT57	PT58	LP	LP20	LPC
Line voltage ground canopy	Line voltage square canopy	Plug-in clamp adapter	Line voltage clamp adapter	1 CCT track channel	Recessed track	2 CCT Track channel
						

Note: Wattage limitations on compatible items must be met.

## SPECIFICATION

### Application

High-output EcoTrack LED trackhead features a sleek, rectangular, low-profile design that combines soft yet powerful illumination with maximum energy efficiency. Perfect for applications in retail stores, boutiques and other areas where adjustable illumination is required and ceilings may be high or distances may be long. Functions both as a flood and as an even, scallop-free wall wash to illuminate signage, displays and merchandise. Provides up to 5 times the lumen output of traditional halogen lamp sources.

### Aiming

Precision machined aiming mechanism allows 90° vertical adjustment.

### Connector

Comes standard with 3-Wire H-Type thermoplastic track connections. Optional 2-Circuit/2-Neutral (-2C2N), and 3-Circuit/1-Neutral (-3C1N) are also available.

### Driver

Electronic Direct Current U.L. recognized driver mounted away from LED Array for cool operation and end-of-life modularity. Comes standard with 120VAC input.

### Dimming

Works with standard electronic low voltage (ELV) dimmers. Factory qualified for use with Lutron brand dimmers: SELV300P, DVELV-300P, MAELV-600 and NELV-450.

### Lumen Maintenance

Minimum 50,000 hours L70 life based on ANSI TM-21 calculations from LM80 standardized test results.

### Thermal Management

Effective thermal dissipation facilitated by integral cast-aluminum, heat sink design for maximum heat rejection to provide long LED life.

### Color Temperature:

Available in 3500K (90 CRI), 4000K (90 CRI), and TS354 ColorSelect 3000K/3500K/4000K (90 CRI).

### Safety Labels

ETL/cETL listed. Suitable for dry locations only.

### Warranty

Covered by a 3 Year Warranty to be free of defects in materials and craftsmanship.

### Finish

Available in Black and White.