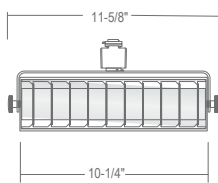


LTD51 : LINEAR LED WALL WASH

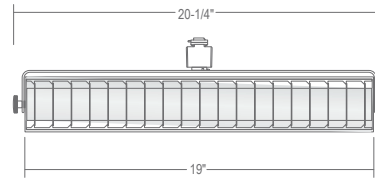
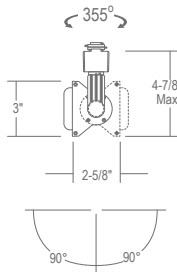
LED WALL WASH 1400LM - 2600LM (20W - 40W)

- For use with standard H-Style 1 circuit and 2 circuit track
- Lockable tilt
- Produces Even, Scallop-free Wall Wash
- Precision design ensures firm positioning

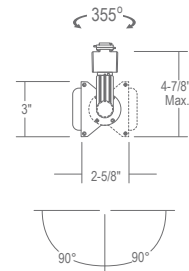
(-2C2N) or (-3C1N) Connector



LTD5120



LTD5140



ORDERING : LTD5120B-TS30-LVR-2C2N

Fixture		Finish		Color Temperature		Accessories		Connector Options	
Fixture		Finish		Color Temperature		Accessories		Connector Options	
1400lm 20W	LTD5120	Black	B	3000K	-TS30²	No Louver	Blank	1CCT/1NT Connector	Blank
2600lm 40W	LTD5140	White	W	3500K	-TS35	Louver	-LVR	2CCT/2NT Connector	-2C2N¹
				4000K	-TS40			Connector	
				ColorSelect	-TS354			3CCT/1NT Connector	-3C1N
				3000K/3500K/4000K					

¹ Only available for LTD5120.

² Only available for LTD5140.

COMPATIBLE ITEMS

LP913F
Line Voltage
Ground Canopy



LP971
Line Voltage
Square Canopy



PT57
Plug-in Clamp
Adapter



PT58
Line Voltage
Clamp Adapter



LP
1 CCT Track
Channel



LP20/LP30
Recessed Track



LP20/LP30
Surface Track



LPC
2 CCT Track
channel



SPECIFICATION**Application**

High-output EcoTrack LED trackhead features a sleek, rectangular, low-profile design that combines soft yet powerful illumination with maximum energy efficiency. Perfect for applications in retail stores, boutiques and other areas where adjustable illumination is required and ceilings may be high or distances may be long. Functions both as a flood and as an even, scallop-free wall wash to illuminate signage, displays and merchandise. Provides up to 5 times the lumen output of traditional halogen lamp sources.

Mounting:

Comes standard with 3-Wire H-Type thermoplastic track connections. Optional 2-Circuit/2-Neutral (-2C2N), and 3-Circuit/1-Neutral (-3C1N) are also available.

Lumen Maintenance:

Minimum 50,000 hours L70 life based on ANSI TM-21 calculations from LM80 standardized test results.

Electrical Components

Thermal Management:

Effective thermal dissipation facilitated by integral aluminum heat sink for maximum heat rejection to provide long LED life.

Driver:

Electronic Direct Current U.L. recognized driver mounted away from LED Array for cool operation and end-of-life modularity. Comes standard with 120VAC input.

Color Temperature:

Available in 3500K (90 CRI), 4000K (90 CRI), and TS354 ColorSelect 3000K/3500K/4000K (90 CRI).

Finishes

High quality powder coat finish for maximum durability. Available in Black and White.

Control

Works with standard electronic low voltage (ELV) dimmers. Factory qualified for use with Lutron brand dimmers: SELV300P, DVELV300P, MAELV-600 and NELV-450.

SPECIFICATION (Continued)

Certifications and Listings

cETLus/UL listed. Suitable for dry locations only

Aiming Mechanism

Precision machined aiming mechanism allows 90° vertical adjustment..

Caution

Fixtures must be grounded in accordance with national, state and/or local electrical codes. Failure to do so may result in serious personal injury.

Warranty

Covered by a 3-Year Warranty to be free of defects in materials and craftsmanship. Recommended for applications where ambient temperatures do not exceed 35°C (95°F), installations exceeding this temperature will result in reduced LED lamp life and avoided warranty.