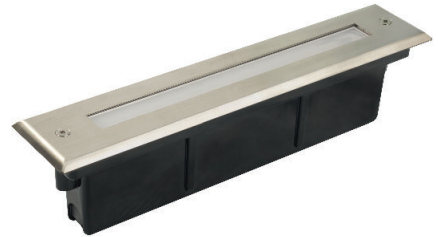
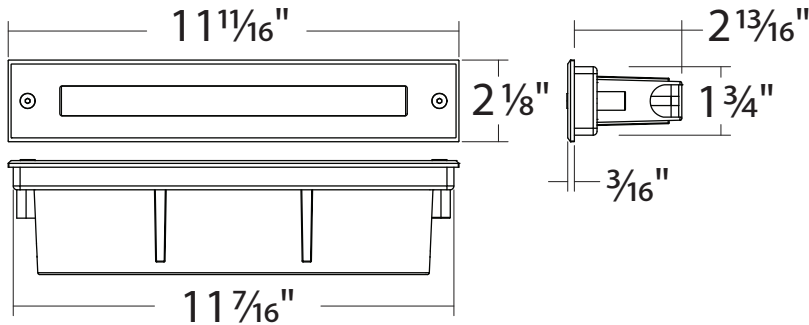


SL120: 2" x 12" STEP LIGHT

FLAT RECESSED LED 160LM (5W)



- High Quality Die-Cast Construction
- High 80 CRI
- IP65
- 5-Year Warranty
- 32W CFL Equivalent



ORDERING : SL120B-T30

SL120		
Fixture	Finish	Color Temperature

Finish	Color Temperature	
Black	B	3000K -T30
White	W	4000K -T40
Silver	S	

2023.09.14

SPECIFICATION

Application

Slim Recessed Step Light designed for commercial, architectural, and residential installation. Narrow profile designed to conform to the architectural requirements for the illumination of steps, stairways, walkways, aisles, ramps, and other indoor and outdoor applications. Can be mounted vertically.

Outer Housing

Nylon, color: black.

Housing

Constructed of high grade die cast aluminum with a powder coat finish silicone o-ring gasket. Includes an LED array, LED driver, cable gland with 6-1/2" of outdoor cord. Fixture comes with faceplate and lens installed onto housing by two (2) captive, tamper resistant, stainless steel screws. Housing (with faceplate) installs into outer housing by two flat head captive stainless steel screws. Cord connects to power supply (by others) outside housing.

Faceplate

Rectangular flat open one piece die cast aluminum faceplate with a powder coat finish and semi-translucent UV stabilized polycarbonate opal lens. Faceplate is installed to housing by two (2) captive, tamper resistant, stainless steel screws. A separate brushed stainless steel faceplate (order separately) can be installed over the existing faceplate for a stainless steel finish (SL120SS).

Lumen Maintenance

Minimum 50,000 hours L70 life based on ANSI TM-21 calculations from LM80 standardized test results. See ordering guide for delivered lumens.

Thermal Management

Effective thermal dissipation facilitated by integral cast-aluminum, finned heat sink design to provide long LED life.

Electrical

LED driver, 120VAC, 50/60Hz, electronic Constant Current, Class 2, Power Factor > .56pf, integrally mounted. Use LED driver option for cold weather applications (-30°C and above).

Caution

LITON recommends use of surge protectors on the power entering LED Housings. Surge damage is not covered by warranty.

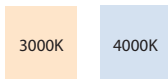
SPECIFICATION (Continued)

Warranty

Covered by a 5-Year Warranty to be free of defects in materials and craftsmanship. Fixture should not be installed in applications with ambient temperature above 45 degrees C. Doing so will result in reduced lamp life and voided warranty.

Color Temperature

Available in 3000K and 4000K.



LED Details

5W 160 Lumens delivered. Color Rendering Index (CRI): 80.