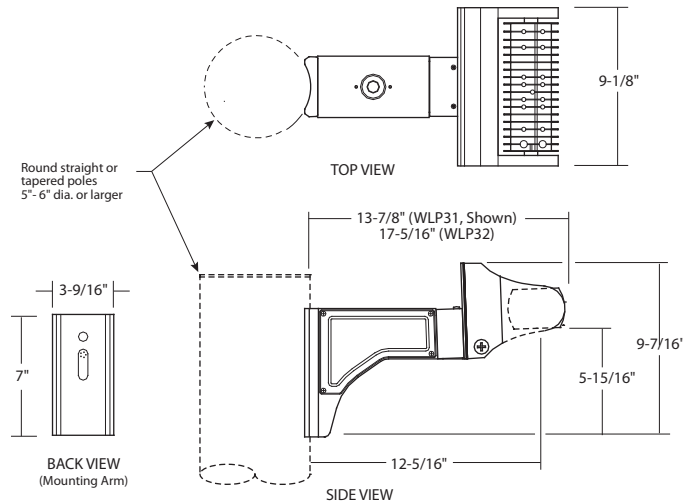


## WLP31/WLP-PLER, WLP32/WLP-PLER 9" DEXTERO W/ ROUND POLE MOUNT

3250LM (25W)/5200LM (40W)/7800LM (60W)/10,500LM (80W)/15,600LM (120W)

- Durable, corrosion resistant finish
- High lumen output up to 15,600lm
- Mounts to round straight or tapered poles 5"- 6" dia. or larger
- Emergency back up available
- 5 year limited warranty
- 120V/277V
- Dark Sky Compliant Option



Round Pole Mount shown on round pole, (not included).

(WLP31 shown)

### ORDERING – Example: WLP31W-60WUE-D10-SH/WLP-PLERW

#### WLP31

Fixture      Finish      Lumens      Driver      Color Temperature      Options      Shielded /      Mounting Style      Finish

#### DEXTERO FLOOD

Fixture	Driver	Color Temperature	Options
1-Direction <b>WLP-31</b>	Non-Dimming (120V) <b>Blank</b>	4000K <b>Blank</b>	None <b>Blank</b>
2-Direction <b>WLP-32</b>	Non-Dimming (120V/277V) <b>UE</b>	3000K <b>-T30</b>	Remote Emergency <b>-EMAC<sup>1,3</sup></b>
Finish	0-10V Dimming (120V/277V) <b>UE-D10</b>		Integral 10W EM Battery <b>-EMA<sup>4</sup></b>
Bronze <b>Blank</b>	2-Wire, ELV, 0-10V Dimming (120V/277V) <b>UE-DUN</b>		Integral Daylight Sensor <b>-SDL</b>
Lumens	347V, 0-10V Dimming <b>-347-D10<sup>1</sup></b>		Dual Switching <b>-2CCT<sup>2</sup></b>
3250lm (25W) <b>-25W</b>			Shielded
5200lm (40W) <b>-40W</b>			None <b>Blank</b>
7800lm (60W) <b>-60W</b>			Shield <b>-SH</b>
10,500lm (80W) <b>-80W<sup>2</sup></b>			
15,600lm (120W) <b>-120W<sup>2</sup></b>			

#### MOUNTING ACCESSORY

Mounting Style	Finish
Round Pole Mount <b>/WLP-PLER</b>	Bronze <b>Blank</b>
	White <b>W</b>

<sup>1</sup>Available for WLP31 only.  
<sup>2</sup>Available for WLP32 only.  
<sup>3</sup>Remote Emergency Battery (EMAC) available for 25W only  
<sup>4</sup>Integral 10W Emergency Battery (EMA) 25W & 40W only.



# WLP31/WLP-PLER, WLP32/WLP-PLER

## 9" DEXTERO W/ ROUND POLE MOUNT

3250LM (25W)/5200LM (40W)/7800LM (60W)/10,500LM (80W)/15,600LM (120W)

### SPECIFICATION

#### Application

Liton's DexterO luminaire Round Pole Mount mounts to round straight poles 5"-6" dia. or tapered pole (5"-6" dia.) at arm mounting location. Its high lumen output makes it an ideal site and path lighting solution.

#### DEXTERO WLP31, WLP32

##### Construction

Constructed from high grade die cast aluminum with, high grade aluminum arms and heat sinks and a powder coat finish. Includes an adjustable LED arrays with optics (rotates 90° up and 90° down), LED driver and a mounting bracket.

##### Lumen Maintenance

Minimum 50,000 hours L70 life based on ANSI TM-21 calculations from LM80 standardized test results. See ordering guide for delivered lumens.

##### Thermal Management

Heat dissipation facilitated by exposed integral aluminum heat sink to maximize heat rejection in an open air environment. Recommended ambient temperature is below 35°C to achieve minimum L70 life of 50,000 hours according to LM80 standard. contact with loosefill blown and rolled insulation.

##### Dimming

(**UE-DUN**) option is a universal dimming system that works with most 3-Wire ELV, 2-Wire Incandescent and 5-Wire 0-10V fluorescent dimmers.

#### Electrical

AC 50/60Hz Electronic Direct Current Class 2 driver integrally mounted. Power Factor > 0.90. For cold weather applications (-22°C and above) use -DUN driver option.

#### Emergency Options

Remote Emergency LED Battery Back-up (-EMAC) available, mounted adjacent to housing by installer. Integral Emergency LED Battery Back-up (-EMA) mounted inside fixture for unabtrusive design illuminates during normal power to blend in with other AC only architectural luminaires. When AC power fails, the device immediately switches to the emergency mode, operating the LEDs for a minimum of 90 minutes. Remote test switch, plate cover and junction box included.

#### Finish

A 7-stage electrostatic, polymer process provides a finish that delivers outstanding durability, superior anti-aging, resistance to corrosion and UV-degradation. Finish is high-quality Bronze (**Blank**) powder coat.

#### Listings

UL Listed. Suitable for wet location. Assembled in USA. (IP65). DLC approval.

#### Dark Sky Compliance

Fixture is Dark Sky compliant with optional 3000K (-T30) and Shield (-SH) when fixture is pointing downward.

#### Caution

LITON recommends use of surge protectors on the power entering LED housings. Surge damage is not covered by warranty. Fixtures must be grounded in accordance with national, state and/or local electrical codes. Failure to do so may result in serious personal injury.

#### Warranty

Covered by a 5 Year Warranty to be free of defects in materials and craftsmanship. Fixture should not be installed in applications with ambient temperature above 60°C. Doing so will result in reduced lamp life and voided warranty.

#### WLP-PLER ROUND POLE MOUNTING ACCESSORY

##### Construction

Round Pole Mount (**WLP-PLER**) arm is made from a one (1) piece 3/16" thick (min.) die cast aluminum (and gasket), an aluminum door (attached to arm with a gasket and screws making up an internal wiring compartment), an 1/8" thick aluminum plate (and gasket), and a 13/32" (minimum) thick die cast aluminum curved adapter plate. Finish is high-quality Bronze or White powder coat.

Round Pole Mount (WLP-PLER) secures to WLP31 or WLP32 with the 1/8" plate and hardware and with the curved die cast adapter plate is mounted to a round straight pole (5"-6" dia.) or round tapered pole (5"-6" dia. at arm mounting location) with hardware/bolts (pole and hardware/bolts by others).

#### Technical

Fixture EPA and Weights

FIXTURE	EPA*	WT.**
WLP31/WLP-PLER	0.55 ft <sup>2</sup>	10.4 Lbs
WLP32/WLP-PLER	0.55 ft <sup>2</sup>	13.2 Lbs

\* EPA (Effective Projected Area) in Sq. Feet (ft<sup>2</sup>)  
\*\*Maximum Fixture Weight (including accessories)

#### Dimensions

FIXTURE	LENGTH †	WIDTH †	HEIGHT †
WLP31/WLP-PLER	14.19"	9.15"	9.44"
WLP32/WLP-PLER	17.63"	9.15"	9.44"

† Plus / Minus (+/-) 1/16"

\*Effective Projected Area

