

READ AND UNDERSTAND THESE INSTRUCTIONS BEFORE INSTALLING FIXTURE!

Installation Instructions for AG23 Series

NOTE: Do not use power tools to remove or reinstall screws. Use only hand tools to tighten!

DANGER: Disconnect power before wiring or maintenance. Fixture must be installed by qualified electrician. Do not install in a location where standing water collects. Fixture must always be installed according to local and national electrical codes. Fixture must be installed on a circuit protected by ground fault circuit interrupter (GFCI).

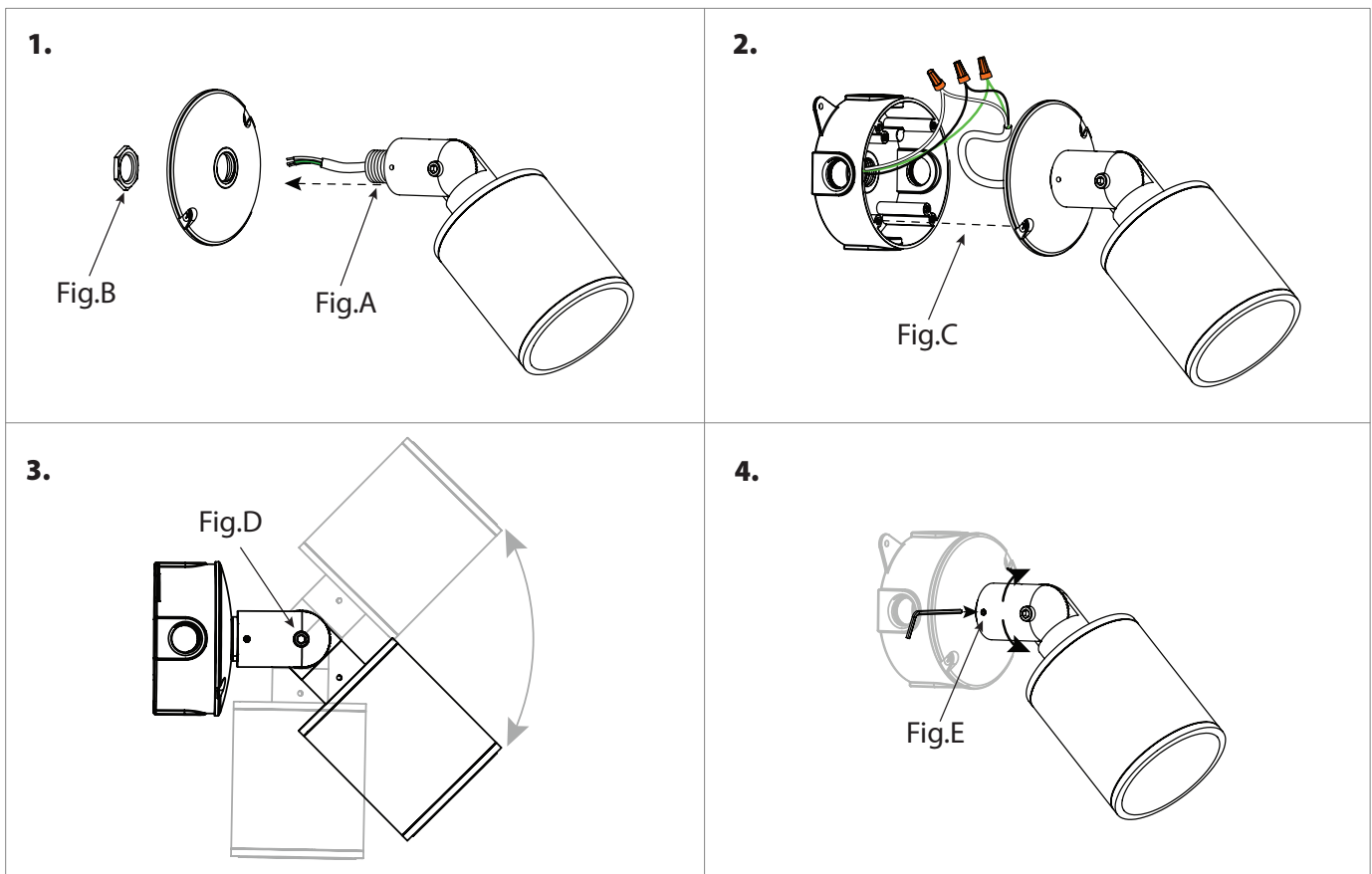
WARNING: All joints must be sealed from water entry, use appropriate sealing material where necessary. Always ensure that all gaskets and sealing surfaces are free of dirt and debris.

Use the following Guidelines when installing LED fixtures: Install LED fixtures on their own circuit, Do not mix with other non LED fixtures or products. Do not use any other electrical equipment like surge protectors, photocells, etcetera on the same circuit that is not rated for use with LED fixtures. Install remote surge protectors appropriate for the installation (by others) with nothing between the surge protector and the LED fixtures.

AG23 series luminaire is designed for general landscape lighting for mounting on walls, ceilings or trees with outdoor weather proof boxes. Make sure supply wire is in place before mounting fixture.

1. Attach nipple (Fig.A) to box cover being sure to make a water tight connection using appropriate thread sealer. Attach lock nut (Fig. B) to inside of box cover to secure nipple to cover.
2. Make connections to supply wires and ground wire (Fig.C) using wires and wire connectors (by others). Secure box cover careful not to pinch wires and be sure box cover gasket is in place.
3. Loosen adjustment screw (Fig.D) using 5mm hex key (by others) but do not remove. Adjust head up or down and tighten screw securely to seal out water and so that teeth mesh together fully. Do not over tighten screw.
4. Loosen set screws (Fig.E) on both sides of knuckle to adjust swivel and re-tighten to secure, be careful not to over tighten.

2023.11.13



**READ AND UNDERSTAND THESE INSTRUCTIONS
BEFORE INSTALLING FIXTURE!**

Installation Instructions for AG23 Series Ground Spike

NOTE: Do not use power tools to remove or reinstall screws. Use only hand tools to tighten!

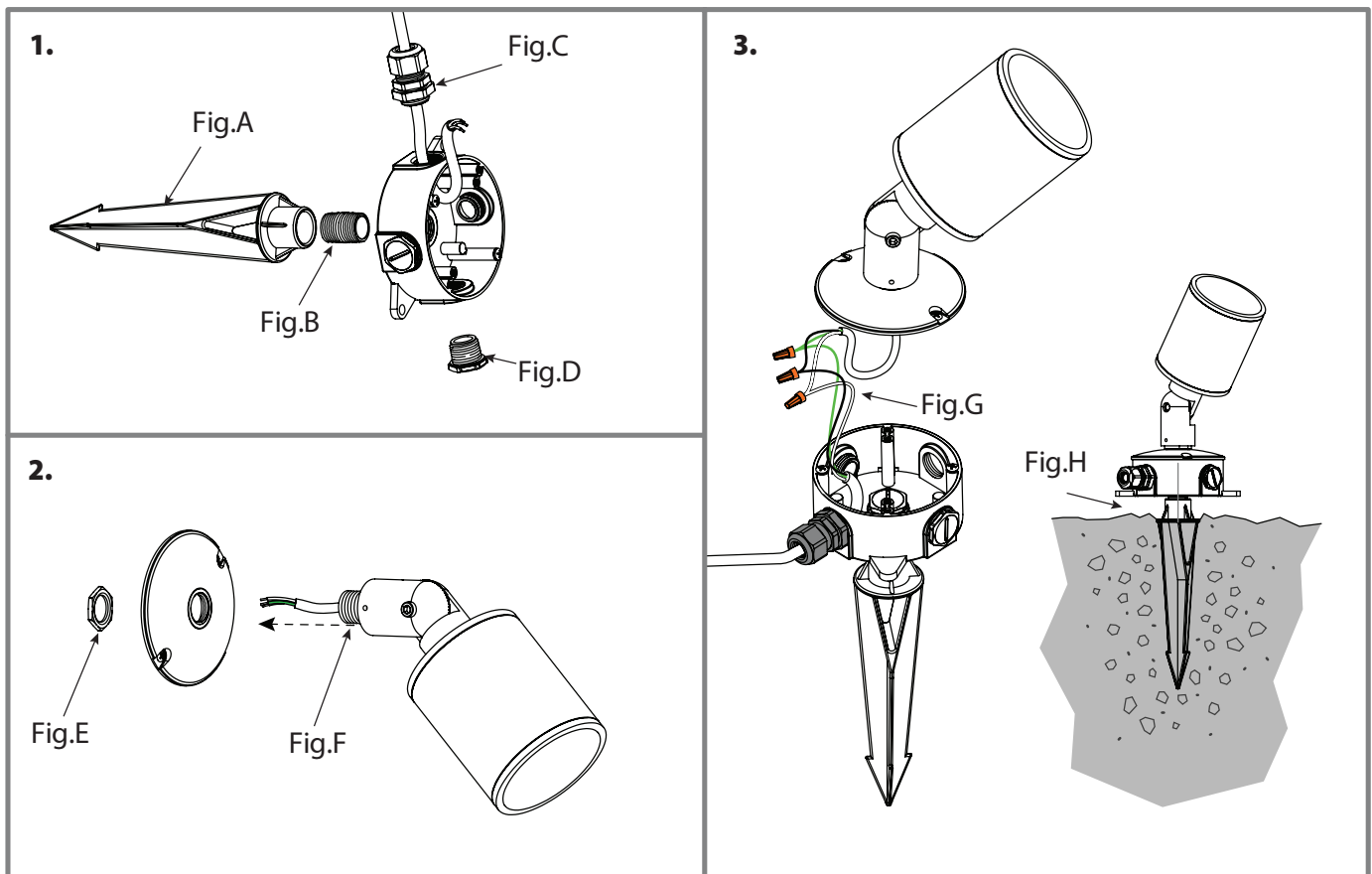
DANGER: Disconnect power before wiring or maintenance. Fixture must be installed by qualified electrician. Do not install in a location where standing water collects. Fixture must always be installed according to local and national electrical codes. Fixture must be installed on a circuit protected by ground fault circuit interrupter (GFCI).

WARNING: All joints must be sealed from water entry, use appropriate sealing material where necessary. Always ensure that all gaskets and sealing surfaces are free of dirt and debris.

Use the following Guidelines when installing LED fixtures: Install LED fixtures on their own circuit, Do not mix with other non LED fixtures or products. Do not use any other electrical equipment like surge protectors, photocells, etcetera on the same circuit that is not rated for use with LED fixtures. Install remote surge protectors appropriate for the installation (by others) with nothing between the surge protector and the LED fixtures.

AG23 series luminaire is designed for general landscape lighting for mounting on walls, ceilings or trees with outdoor weather proof boxes. Make sure supply wire is in place before mounting fixture.

1. Attach ground spike (Fig.A) to 1/2' pipe nipple (Fig B) and attach to bottom of outdoor j-box. Attach watertight cord strain relief with 1/2" pipe thread (Fig. C) to box or watertight conduit fitting (by others). Be sure to use hole plugs (Fig. D) to seal any unused openings (by others).
2. Attach nipple (Fig. F) to box cover being sure to make a watertight connection using appropriate thread sealer. Attach lock-nut (Fig. H) to inside of box cover to secure nipple to cover.
3. Make connections to supply wires and ground wire (Fig. G) using wires and watertight wire connectors (by others). Secure box cover careful not to pinch wires and be sure box cover gasket is in place. Bury ground spike no deeper than its flange, j-box should always be above grade and never allowed to sit in standing water (Fig. H).



2023.11.13

**READ AND UNDERSTAND THESE INSTRUCTIONS
BEFORE INSTALLING FIXTURE!**

Installation Instructions for AG23 Series Stem Mount

NOTE: Do not use power tools to remove or reinstall screws. Use only hand tools to tighten!

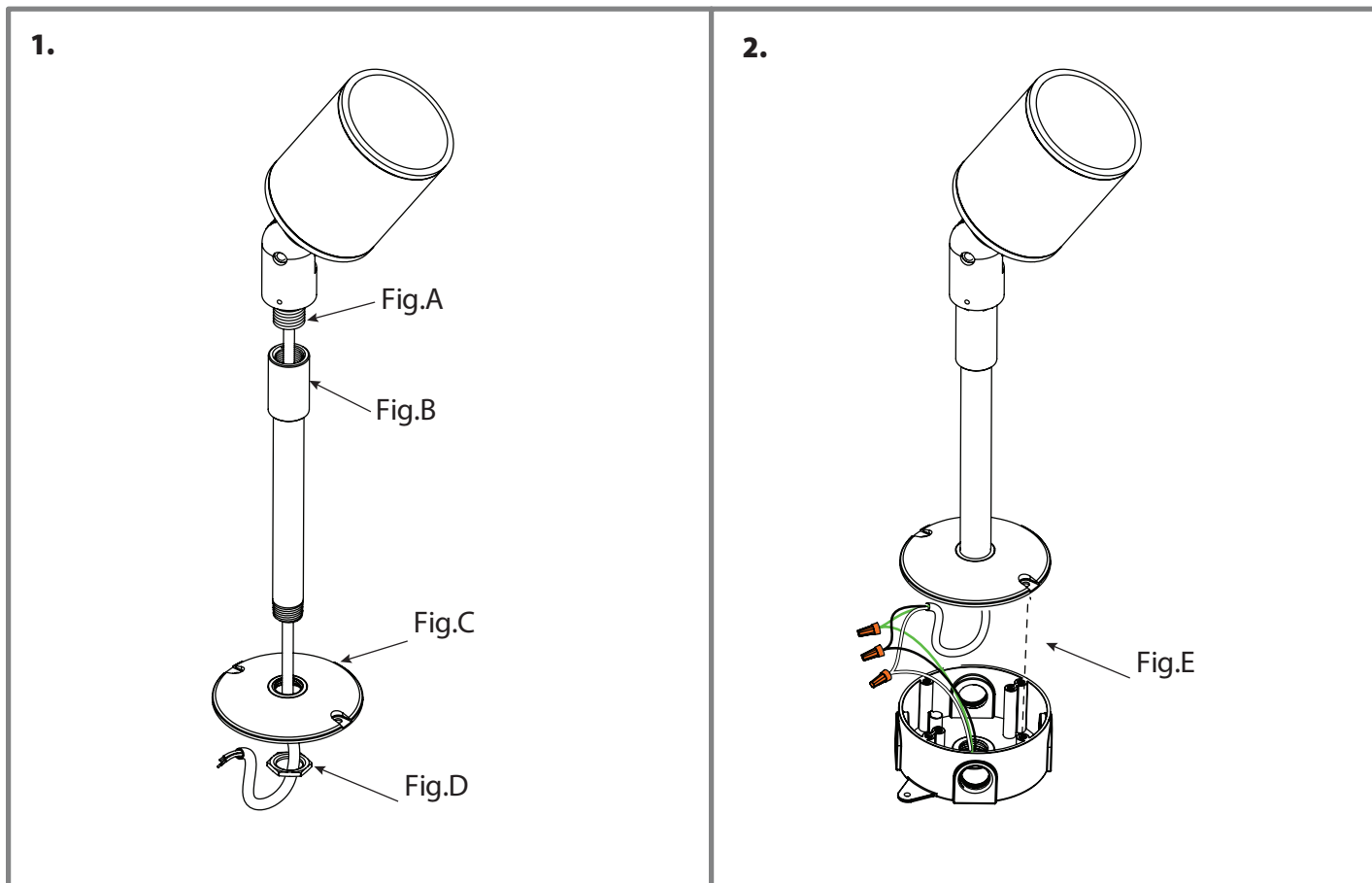
DANGER: Disconnect power before wiring or maintenance. Fixture must be installed by qualified electrician. Do not install in a location where standing water collects. Fixture must always be installed according to local and national electrical codes. Fixture must be installed on a circuit protected by ground fault circuit interrupter (GFCI).

WARNING: All joints must be sealed from water entry, use appropriate sealing material where necessary. Always ensure that all gaskets and sealing surfaces are free of dirt and debris.

Use the following Guidelines when installing LED fixtures: Install LED fixtures on their own circuit, Do not mix with other non LED fixtures or products. Do not use any other electrical equipment like surge protectors, photocells, etcetera on the same circuit that is not rated for use with LED fixtures. Install remote surge protectors appropriate for the installation (by others) with nothing between the surge protector and the LED fixtures.

AG23 series luminaire is designed for general landscape lighting for mounting on walls, ceilings or trees with outdoor weather proof boxes. Make sure supply wire is in place before mounting fixture.

1. Attach 1/2" pipe nipple (Fig A) from fixture to pipe coupler (Fig. B) and attach pipe to mounting plate / outdoor box cover with 1/2" pipe threads (Fig. C) (by others). Use lock nut (Fig. D) on back side of box cover to secure.
2. Make connections to supply wires and ground wire (Fig.C) using wires and wire connectors (by others). Secure box cover careful not to pinch wires and be sure box cover gasket is in place.



2023.11.13

**READ AND UNDERSTAND THESE INSTRUCTIONS
BEFORE INSTALLING FIXTURE!**

Installation Instructions for AG23 Series Tree Mount

NOTE: Do not use power tools to remove or reinstall screws. Use only hand tools to tighten!

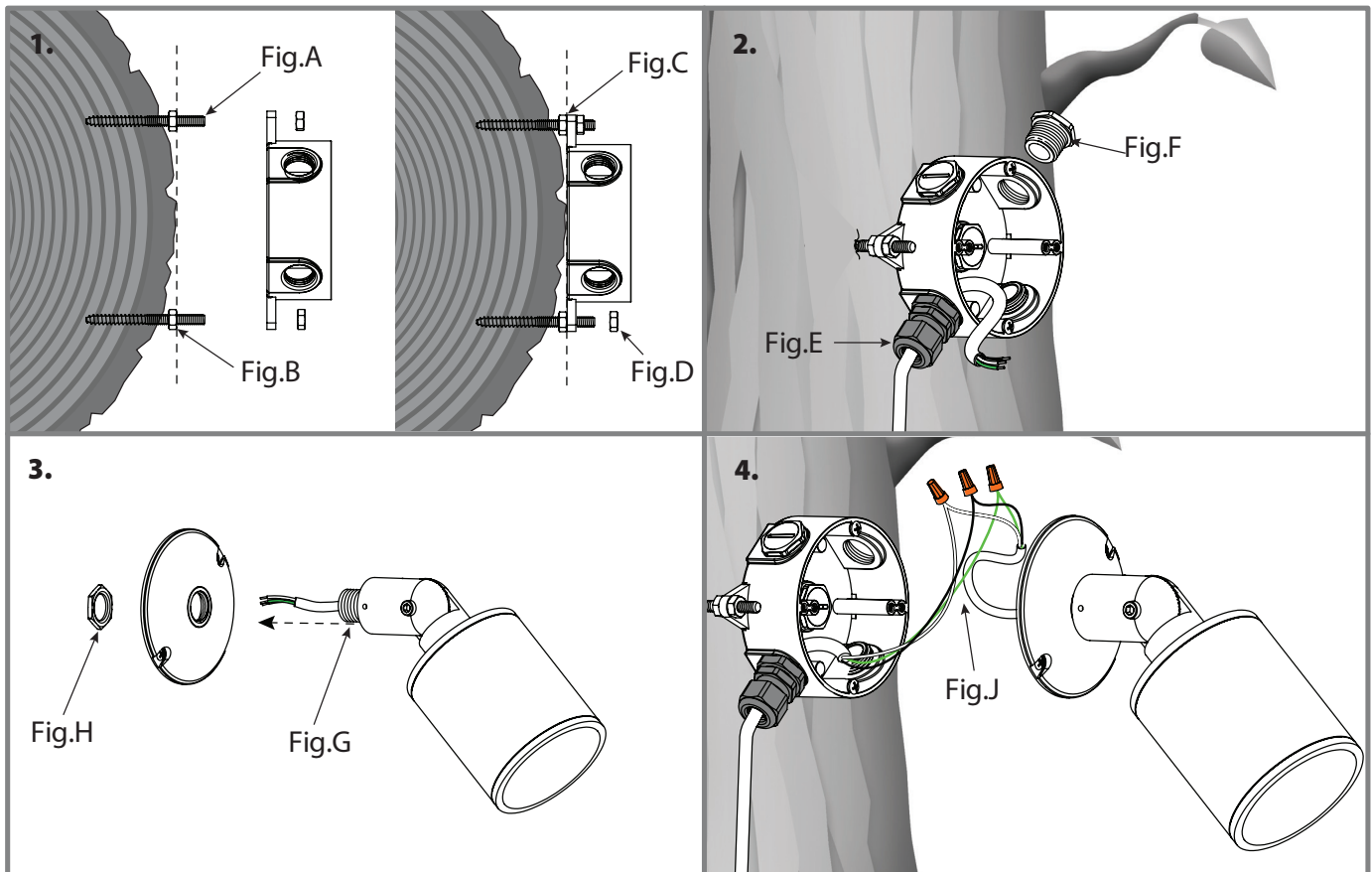
DANGER: Disconnect power before wiring or maintenance. Fixture must be installed by qualified electrician. Do not install in a location where standing water collects. Fixture must always be installed according to local and national electrical codes. Fixture must be installed on a circuit protected by ground fault circuit interrupter (GFCI).

WARNING: All joints must be sealed from water entry, use appropriate sealing material where necessary. Always ensure that all gaskets and sealing surfaces are free of dirt and debris.

Use the following Guidelines when installing LED fixtures: Install LED fixtures on their own circuit, Do not mix with other non LED fixtures or products. Do not use any other electrical equipment like surge protectors, photocells, etcetera on the same circuit that is not rated for use with LED fixtures. Install remote surge protectors appropriate for the installation (by others) with nothing between the surge protector and the LED fixtures.

AG23 series luminaire is designed for general landscape lighting for mounting on walls, ceilings or trees with outdoor weather proof boxes. Make sure supply wire is in place before mounting fixture.

1. Attach studded wood screw (Fig.A) to tree using a #10/24 stud driver (by others). Make the tops of the backing nuts (Fig. B) flush to each other and to the tree surface. Attach outdoor box and adjust backing nut if necessary to make contact with both mounting flanges and the tree surface (Fig. C). Secure with locknuts (Fig. D).
2. Attach watertight cord strain relief with 1/2" pipe thread (Fig. E) to box or watertight conduit fitting (by others). Be sure to use hole plugs (Fig. F) to seal any unused openings (by others).
3. Attach nipple (Fig. G) to box cover being sure to make a watertight connection using appropriate thread sealer. Attach locknut (Fig. H) to inside of box cover to secure nipple to cover.
4. Make connections to supply wires and ground wire (Fig.J) using wires and wire connectors (by others). Secure box cover careful not to pinch wires and be sure box cover gasket is in place.



2023.11.13