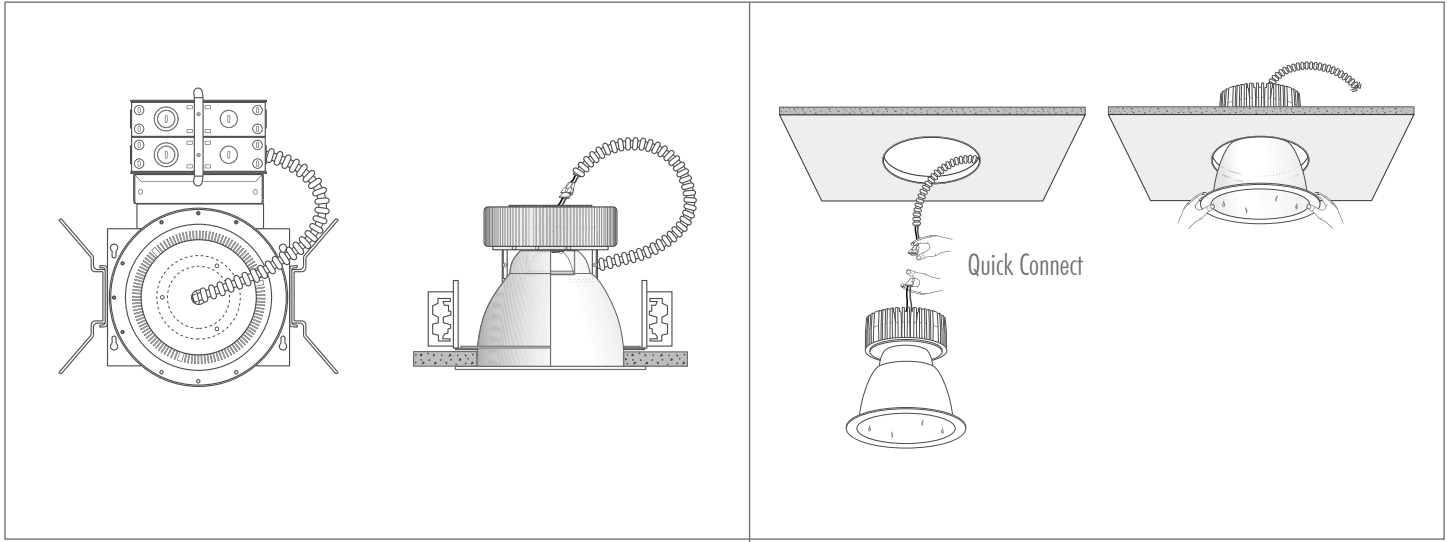


INSTALLATION INSTRUCTIONS FOR NEW CONSTRUCTION ARCHITECTURAL LED HOUSINGS & TRIMS



HOUSING PREPARATIONS AND PRECAUTIONS

WARNING • Before starting to work with the electrical supply wires, verify that this circuit's power has been disconnected by switching off its circuit breaker or removing its fuse from the fuse panel. Using a wall switch to turn off the circuit is not sufficient to prevent an electrical shock. This luminaire must be connected to supply wire rated at 90°C. If you are unable to determine the wire rating, consult a qualified electrician before installing.

CAUTION • Ceiling insulation must be kept a minimum of 3" away from the sides of the pieces that make up this unit. Insulation is not allowed to contact the top. In addition, the unit must maintain a minimum clearance of 1/2" away from all combustible materials such as adjacent wooden ceiling joists and sub-flooring or roofing above. These factors should be taken into consideration when locating this fixture.

1. CEILING ROUGH/DROP-IN

Install fixture into ceiling cavity using adjustable mounting Bat-Wing Brackets supported by 1/2" rigid tube, 3/4" channel, 1 1/2" channel (optional) inserted through the cutouts on both ends of the brackets.

2. HEIGHT ADJUSTMENT

Adjust attachment position of both Bat-Wing Brackets so that the bottom edge of the Mounting Pan Aperture Ring will be flush with the finished ceiling line before tightening the fasteners.

3. WIRE-IN

Open the Junction Box and make electrical connections as needed per the wiring diagram and in accordance with local code(s) or N.E.C. Use an appropriate method suitable for the size, type and number of wires at each connection. Remove a knockout from the edge of the Junction Box to strain relief the supply conduit/cable. Ground the luminaire in the Junction Box using green wire provided. When all wiring is completed, carefully push wires into Junction Box and snap its cover closed.

TRIM PREPARATIONS AND PRECAUTIONS

WARNING • Do not connect the LED trim to the housing (hot-plugging) while the housing is energized. Doing so may damage the LED and/or the driver and void the warranty.

WARNING • The LED module is pre-installed in the trim. Do not attempt to install another lamp not designed for use with the product and don't attempt to service the LED module unless directed to do so by Liton personnel. Doing so will void the warranty.

CAUTION • It is recommended that gloves be worn while handling or installing the trim to avoid contamination, staining or otherwise damaging the trim.

ELECTRICAL CONNECTION

1. Pull the flex conduit down through the plaster frame.
2. Connect the quick connector to the trim.
3. Push trim up into the housing until the trim flange is flush with the ceiling.