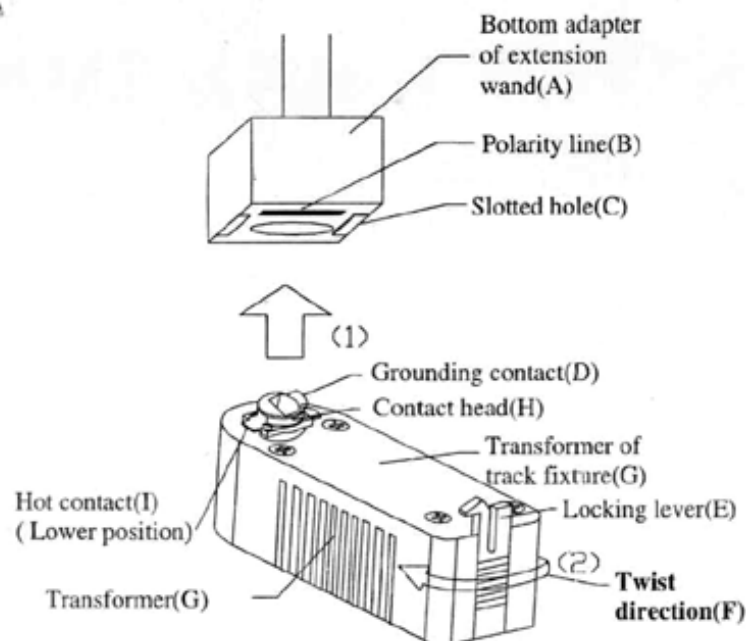
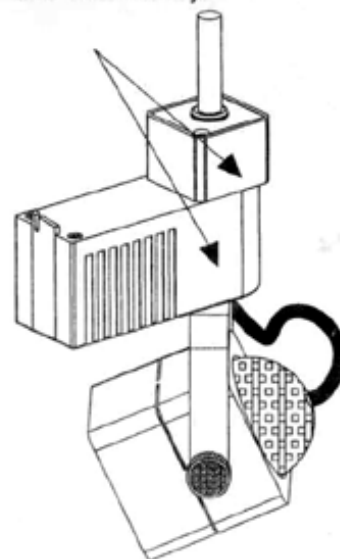


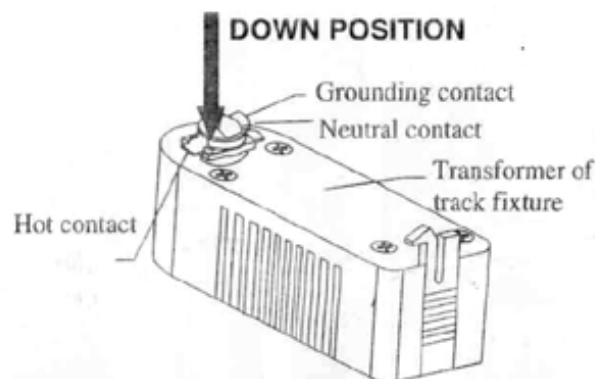
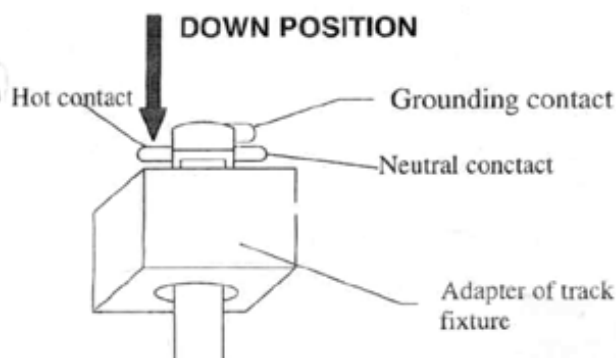
INSTALLATION INSTRUCTION OF EXTENSION WAND W/LOW VOLTAGE FIXTURES



Both sides of bottom adapter of Extension Wand keep in line with both sides of transformer vertically and horizontally.



1. Hold the transformer of track fixture (G),insert contact head (H) into bottom adapter of Extension Wand (A).
2. According to twist direction (F),twist transformer approximately 90 degree until contact head (H) locks into slotted hole, and both sides of bottom adapter of Extension Wand keep in line with both sides of adapter of transformer vertically and horizontally.
Caution : Make sure the Hot contact (I) of transformer of track fixture is in the lower position.
3. Make sure Grounding contact of transformer(D) will be on the same side of polarity line (B) after installation of transformer of track fixture (G).CAUTION : Turning the transformer of track fixture (G) in wrong direction will damage bottom of Extension Wand.



CAUTION : HOT CONTACT OF TRACK HEAD MUST BE IN COMPLETE DOWN POSITION BEFORE INSTALLING IN EXTENSION WAND.