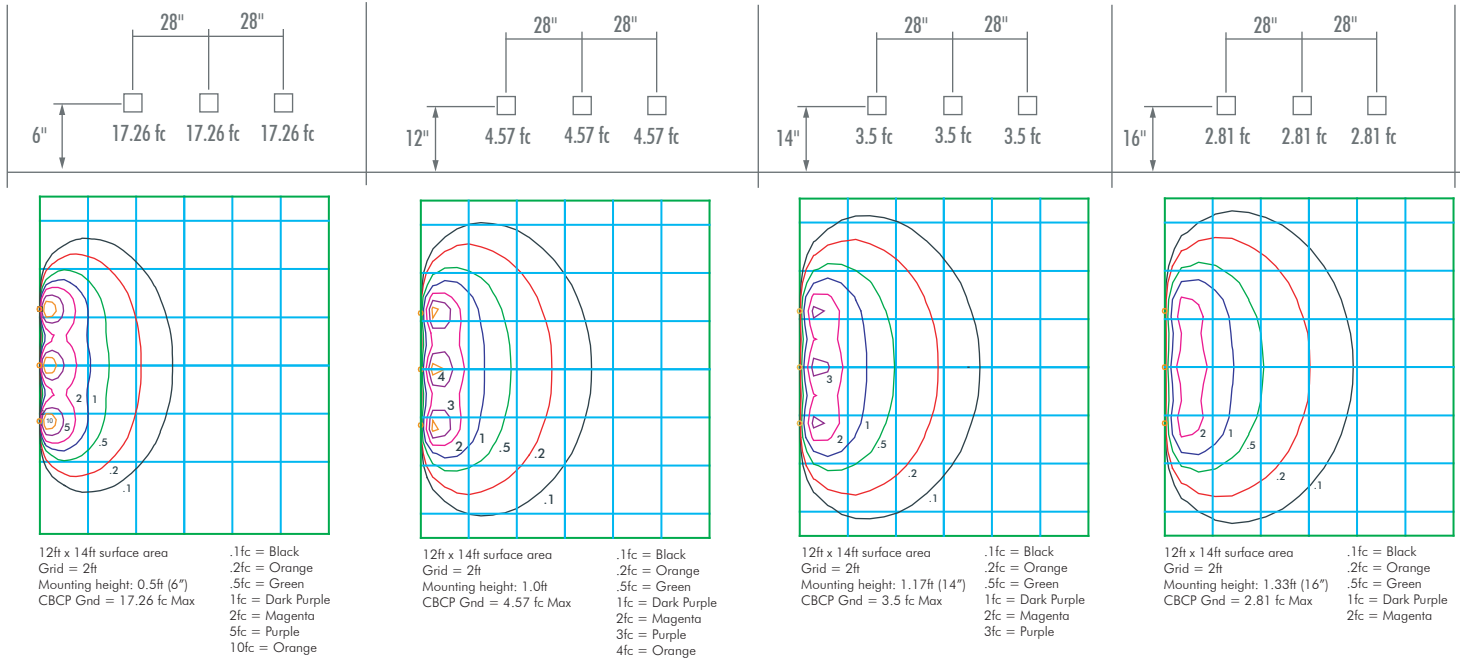


Fixture no: LSLDH00B  
 Power: 2.7 W  
 Test Date: 7/28/2017  
 Beam Angle 50%: 117.9°  
 Field Angle 10%: 165°  
 CCT (Color Temp): 2977 K

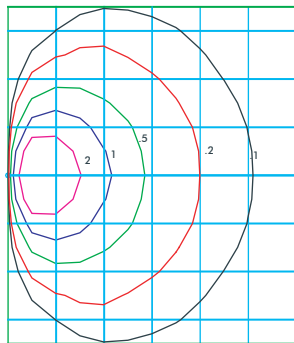
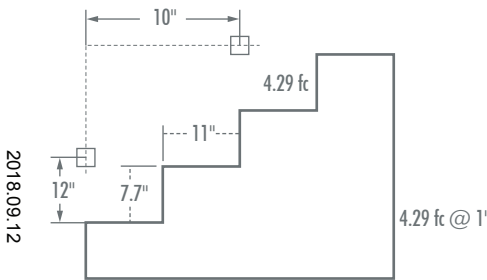
CRI Value: 86.6  
 R9 Value: 33.7  
 Lm Delivered: 44.5 lm  
 CBCP: 14.2 cd  
 Power Factor: 0.92

## SPACING RECOMMENDATIONS FOR OPTIMAL LIGHT DISTRIBUTION

### CORRIDORS / HALLWAYS



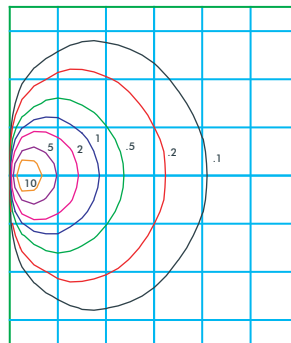
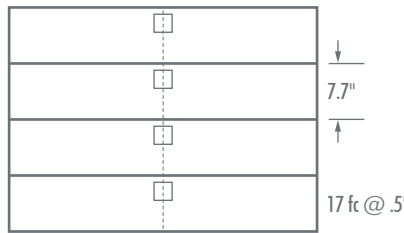
### STAIRS - WALL MOUNT



6ft x 7ft surface area  
 Grid = 1ft  
 Mounting height: 1ft (12")  
 CBCP Gnd = 4.29 fc Max  
 .1fc = Black  
 .2fc = Orange  
 .5fc = Green  
 1fc = Dark Purple  
 2fc = Magenta

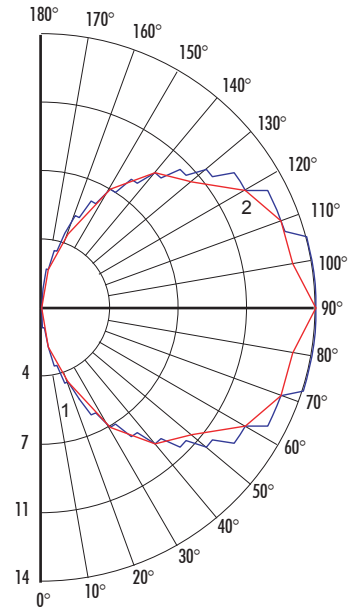
### STAIRS - STEP MOUNT

Mount in center of stair as close to the upper tread as possible. For best results use one light per step for steps narrower than 5 feet.



6ft x 7ft surface area  
 Grid = 1ft  
 Mounting height: 0.5ft (6")  
 CBCP Gnd = 17.17 fc Max  
 .1fc = Black  
 .2fc = Orange  
 .5fc = Green  
 1fc = Dark Purple  
 2fc = Magenta  
 5fc = Purple  
 10fc = Orange

### POLAR CURVE



Maximum Candela = 14 Located At Horizontal Angle = 0, Vertical Angle = 72.5  
 # 1 (Blue) - Vertical Plane Through Horizontal Angles (0 - 180) (Through Max. Cd.)  
 # 2 (Red) - Horizontal Cone Through Vertical Angle (72.5) (Through Max. Cd.)