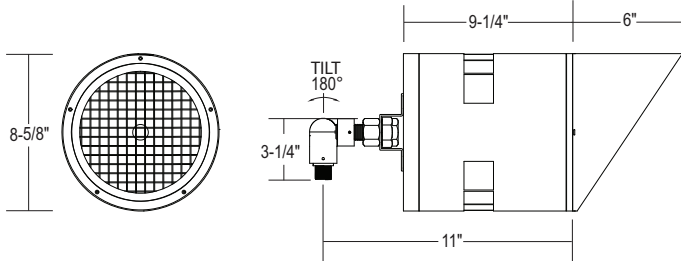


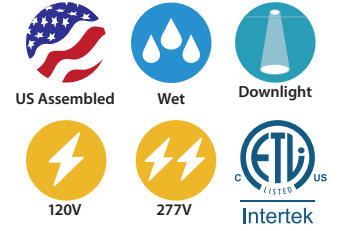
AG2380 : AG2·SERIES

8" ROUND SPOT/FLOOD LIGHT

2,900LM - 16,000LM (28W - 160W)



AG2380 Shown with Glare Shield Option (-SH)



- Expansive lumen range of 2,900lm (28W) to 16,000lm (160W)
- Multiple Dimming Options with custom capabilities
- Matching wall and ceiling mount profiles
- 120V/277V Input options
- Multiple Beam Spreads and Color Temperature
- Weighs 12 lb
- 90 CRI Standard
- IP65

ORDERING : AG2380W-L075-B40UE-D10-T27-PL-SH / AG2-STM06-W [Click for Full Specification Details](#)

AG2380

Fixture	Finish	Lumen	Beam Spread	Control	LED	Mounting	Options	Accessories	Color Finish
Finish		Beam Spread		LED		Accessories			
White	AG2380W	Spot (15°)	-B15⁸	2700K (90 CRI)	-T27	CEILING AND WALL Installation			
Black	AG2380B	Narrow Flood (25°)	-B25⁸	3000K (90 CRI)	-T30	6" Stem	/AG2-STM06		
Bronze	AG2380BZ⁷	Flood (40°)	-B40	3500K (90 CRI)	-T35	12" Stem	/AG2-STM12		
Silver	AG2380S⁷	Wide Flood (60°)	-B60	4000K (90 CRI)	-T40	CEILING Installation			
Lumen		Very Wide Flood (100°)	-B100⁹	5000K (80 CRI)	-T50⁵	24" Stem	/AG2-STM24		
2900lm (28W)	-L030	Control		-TTW: Tunable White	-TTW³	36" Stem	/AG2-STM36		
4000lm (40W)	-L040	0-10V Dimming (120V/277V)	UE-D10	Mounting		48" Stem	/AG2-STM48		
5000lm (52W)	-L050	1%, 0-10V Dimming (120V/277V)	UE-D10P1⁶	Flat Plate, Surface Mount	-PL	EMERGENCY OPTIONS Installation			
5800lm (60W)	-L060	UniDim™ 0-10V, ELV, Triac Dimming (120V/277V)	UE-DUN¹	Junction Box	-JB	Face Mount EM Back Pack	/AG2-EMB		
6700lm (72W)	-L070	ELV and Triac Dimming (120V)	-DIN¹	Options		Empty Back Pack	/AG2-EMB BLANK		
7500lm (70W)	-L075	DMX Dimming (120V/277V)	UE-DMX⁴	None	Blank	Color Finish			
9000lm (80W)	-L090	Casambi Wireless Dimming (120V/277V)	-DCSM⁹	Shield	-SH	White	-W		
10000lm (90W)	-L100	BubblyNet Wireless System (120V/277V)	-DBNT⁹	Frosted Lens	-FR	Black	-B		
10000lm (90W)	-L100	SimplySnap Wireless System (120V/277V)	-DSYN¹⁰			Bronze	-BZ		

¹ (UE-DUN) and (-DIN) not available with (-L050), (-L060), (-L090), (-L120), or (-L160).
² Stem mounts can be adjusted in the field. See instructions.
³ (-TTW) Tunable White via two 0-10V dimming controls. 10-14 week lead time.
⁴ UE-DMX dimming via 0-10V to DMX converter.
⁵ 5000K Color Temperature only available in 80 CRI.
⁶ (UE-D10P1) not available with (-L160) 16000lm (160W).
⁷ Special Order Finish. Minimum order quantity (MOQ) applies. Orders less than MOQ are subject to a special paint set-up fee for the quantity ordered. Extended lead times may apply. Consult Factory.
⁸ (-B15) & (-B25) only available with (-L030), (-L040), (-L050), (-L060), and (-L070) Lumen packages.
⁹ Special Order. Minimum order quantity (MOQ), extended lead time may apply. Consult Factory.
¹⁰ Special Order. Must be ordered with -EMB-BLANK.

Custom RAL Color: Please note that we appreciate custom finishes. Custom finishes are subject to a special paint setup fee for the quantity ordered. Extended lead times may apply. Consult Factory.

COMPATABILITY

