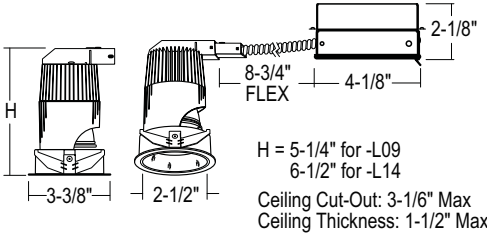


2.5" RECESSED LED

ROUND FLANGED, 600LM TO 1400LM

- 15W, 1000+lm at 67lm/W, and 22W, 1400+lm at 64lm/W for LRLD2521, LRLD2521J, LRLD2571, LRLD2572
- 15W, 600lm at 40lm/W, and 22W, 980lm at 45lm/W for LRLD2519
- Equivalent to 75W MR16 Output
- Ideal where space is limited and energy savings is important



ORDERING – Example: LRLD2521SW-L09B25-T27-DUN-WL

Fixture	Reflector Finish	Trim Ring Finish	Finish ²	Beam Spread ¹	Lumens	Color Temperature	Driver	Rating	Accessories	Optional Frame
Pinhole	LRLD2519¹				1000lm	-L09³	0.5%, 120V, Triac Dimming		Blank	COLOR LENS
Downlight	LRLD2521				1400lm	-L14³	5%, 120V/277V, 0-10V, ELV, Triac Dimming		-DUN	Clear Lens L38 Yellow Lens L40 Blue Lens L41 Amber Lens L42 Green Lens L43 Daylight Blue Lens L44 Red Lens L39 Violet Blue Lens L46
25° Adj. Accent	LRLD2521J			10° Narrow Spot		B10⁴				FILTER LENS
40° Adj. Accent	LRLD2571			25° Narrow Flood		B25				Black Hex Cell Louver LL16-HB-B
Wall Wash	LRLD2572¹			35° Flood		B35				Lens with Internal Louver Filter L48
Reflector Finish				60° Wide Flood		B60				Frosted Soft Focus L49
Matte White	W			Color Temperature						Micro - Prismatic Spread Lens L53
Specular Black	B			3000K		Blank				Linear Spread Lens L55
Specular Clear	C			3000K, 90 CRI		-C90				Ultra Violet Filter L50UV
Specular Graphite	RP			3000K, 97 CRI		-C97				Micro - Prismatic Spread Lens (Light Diffuse) L54
Satin Haze	S			1700K		-T17⁵				
Trim Ring Finish				2500K		-T25⁵				
White	W			2700K		-T27				
Black	B			2700K, 90+ CRI		-T27-C90				
Finish ²				2700K, 97 CRI		-T27-C97				
Black/White	BW			3500K		-T35				
All White	WW			4000K		-T40				
All Black	BB			3000K - 1800K Warm Dimming		-TWD⁶				

¹ Beam Spread Not applicable for LRLD2519 or LRLD2572.
² Finish options for LRLD2519 only. LRLD2519 not available in WW finish.

³ 600lm for -L09 and 980lm for -L14 on LRLD2519 Pinhole.
⁴ Not field changeable.
⁵ Extended lead time may apply. Consult factory.

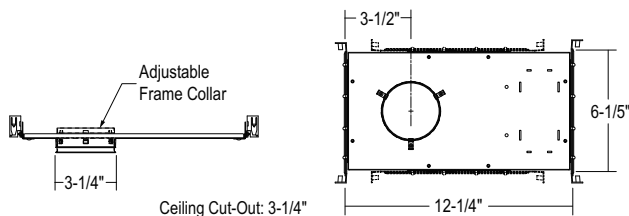
⁶ -TWD Warm Dimming only available on L09 lumen package.
⁷ -WL Airtight Lensed (Wet Location) not available for LRLD2571.
Consult factory for emergency battery options.

NOTE: For commercial applications with 1/2" Pipe or Flex-Conduit (**LITON# PCT031**) Fitting Adaptor should be used. Consult Factory.

OPTIONAL FRAMES

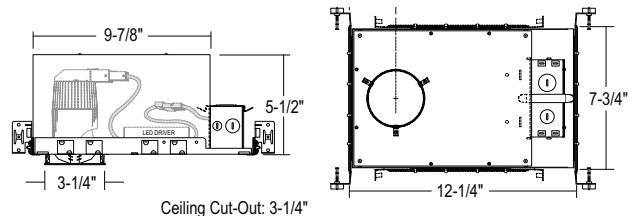
LHLD25-FRM

New Construction Frame (Round)



LHLD25IC-FRM

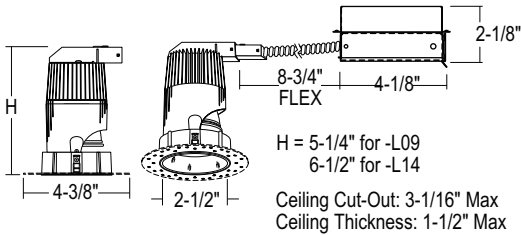
New Construction IC (Insulation Contact) Frame (Round)



2.5" RECESSED LED

ROUND FLANGELESS, 1000LM/1400LM

- Equivalent to 75W MR16 Output
- Ideal where space is limited and energy savings is important
- 15W, 1000+lm at 67lm/W, and 22W, 1400+lm at 64lm/W



LRXLD2521
Downlight



LRXLD2521J
25° Adj. Accent



LRXLD2571
40° Adj. Accent



LRXLD2572
Wall Wash



ORDERING – Example: LRXLD2521S-L09B25-T27-DUN-WL

Trim Style	Reflector Finish	Beam Spread	Lumens	Color Temperature	Driver	Rating	Accessories	Optional Frame
Trim Style		Beam Spread ¹		Color Temperature	Driver	Rating	Accessories	
Downlight	LRXLD2521	10° Narrow Spot	B10²	3000K	0.5%, 120V, Triac Dimming	None	Blank	COLOR LENS
25° Adj. Accent	LRXLD2521J	25° Narrow Flood	B25	3000K, 90 CRI		Airtight Lensed (Wet Location)	-WL⁵	Clear Lens L38
40° Adj. Accent	LRXLD2571	35° Flood	B35	3000K, 97 CRI	5%, 120V/277V, 0-10V, ELV, Triac Dimming			Yellow Lens L40
Wall Wash	LRXLD2572¹	60° Wide Flood	B60	1700K				Blue Lens L41
				2500K				Amber Lens L42
Reflector Finish				2700K				Green Lens L43
Matte White	W			2700K, 90+ CRI				Daylight Blue Lens L44
Specular Black	B			2700K, 97 CRI				Red Lens L39
Specular Clear	C			3500K				Violet Blue Lens L46
Specular Graphite	RP			4000K				FILTER LENS
Satin Haze	S			3000K - 1800K Warm Dimming				Black Hex Cell Louver LL16-HB-B
Lumens (Nominal Delivered)								Lens with Internal Louver Filter L48
1000lm	-L09							Frosted Soft Focus L49
1400lm	-L14							Micro - Prismatic Spread Lens L53
								Linear Spread Lens L55
								Ultra Violet Filter L50UV
								Micro - Prismatic Spread Lens (Light Diffuse) L54

¹ Beam Spread not applicable for LRXLD2572.

² Not field changeable.

³ Extended lead time may apply. Consult factory.

⁴ -TWD Warm Dimming only available on L09 lumen package.

⁵ -WL Airtight Lensed (Wet Location) not available for LRXLD2571.

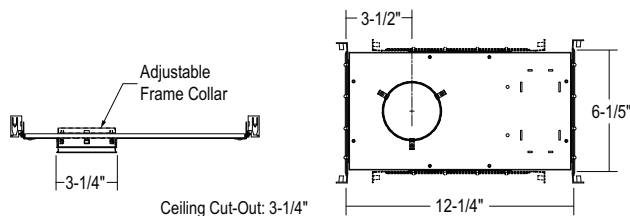
Consult factory for emergency battery options.

NOTE: For commercial applications with 1/2" Pipe or Flex-Conduit (**LITON# PCT031**) Fitting Adaptor should be used. Consult Factory.

OPTIONAL FRAMES

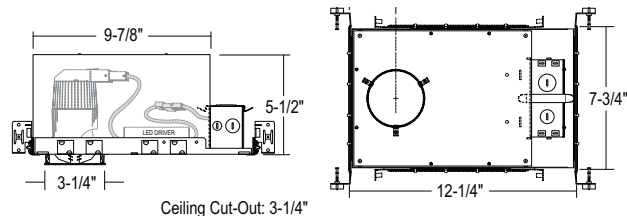
LHLD25-FRM

New Construction Frame (Round)



LHLD25IC-FRM

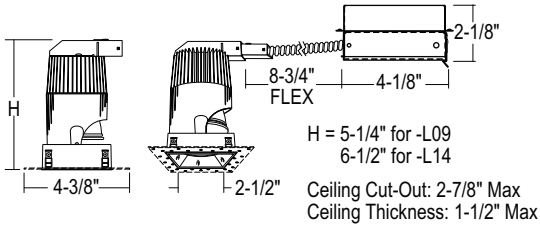
New Construction IC (Insulation Contact) Frame (Round)



2.5" RECESSED LED

SQUARE FLANGELESS, 1000LM/1400LM

- Equivalent to 75W MR16 Output
- Ideal where space is limited and energy savings is important
- 15W, 1000+lm at 67lm/W, and 22W, 1400+lm at 64lm/W



LRXLDQ2521
Downlight



LRXLDQ2521J
25° Adj. Accent



LRXLDQ2571
40° Adj. Accent



LRXLDQ2572
Wall Wash



ORDERING – Example: LRXLDQ2521S-L09B25-T27-DUN-WL

Trim Style	Reflector Finish	Lumens	Beam Spread	Color Temperature	Driver	Rating	Accessories	Optional Frame
Trim Style			Beam Spread ¹		Driver			Accessories
Downlight	LRXLDQ2521		10° Narrow Spot	B10²	0.5%, 120V, Triac Dimming		Blank	COLOR LENS
25° Adj. Accent	LRXLDQ2521J		25° Narrow Flood	B25				Clear Lens L38
40° Adj. Accent	LRXLDQ2571		35° Flood	B35	5%, 120V/277V, 0-10V, ELV, Triac Dimming		-DUN	Yellow Lens L40
Wall Wash	LRXLDQ2572¹		60° Wide Flood	B60				Blue Lens L41
								Amber Lens L42
								Green Lens L43
								Daylight Blue Lens L44
								Red Lens L39
								Violet Blue Lens L46
Reflector Finish			Color Temperature		Rating			FILTER LENS
Matte White	W		3,000K	Blank	None		Blank	Black Hex Cell Louver LL16-HB-B
Specular Black	B		3,000K, 90 CRI	-C90	Airtight Lensed (Wet Location)		-WL⁵	Lens with Internal Louver Filter L48
Specular Clear	C		3,000K, 97 CRI	-C97				Frosted Soft Focus L49
Specular Graphite	RP		1,700K	-T17³				Micro - Prismatic Spread Lens L53
Satin Haze	S		2,500K	-T25³				Linear Spread Lens L55
			2,700K	-T27				Ultra Violet Filter L50UV
Lumens (Nominal Delivered)			2,700K, 90+ CRI	-T27-C90				Micro - Prismatic Spread Lens (Light Diffuse) L54
1000lm	-L09		2,700K, 97 CRI	-T27-C97				
1400lm	-L14		3,500K	-T35				
			4,000K	-T40				
			3000K - 1800K Warm Dimming	-TWD⁴				

¹ Beam Spread not applicable for LRXLDQ2572.
² Not field changeable.
³ Extended lead time may apply. Consult factory.
⁴ -TWD Warm Dimming only available on L09 lumen package.

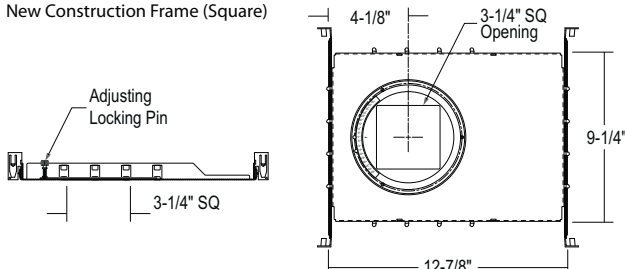
⁵ -WL Airtight Lensed (Wet Location) not available for LRXLDQ2571.
 Consult factory for emergency battery options.

NOTE: For commercial applications with 1/2" Pipe or Flex-Conduit (**LITON# PCT031**) Fitting Adaptor should be used. Consult Factory.

OPTIONAL FRAMES

LHQLD25-FRM

New Construction Frame (Square)



LHQLD25IC-FRM

New Construction IC Frame (Square)
Coming Soon

