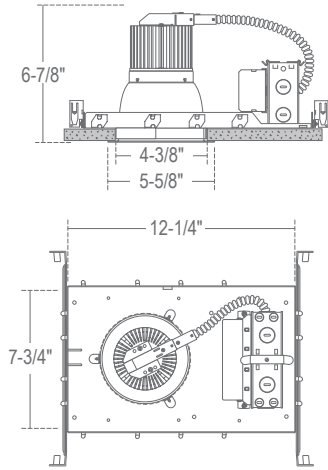
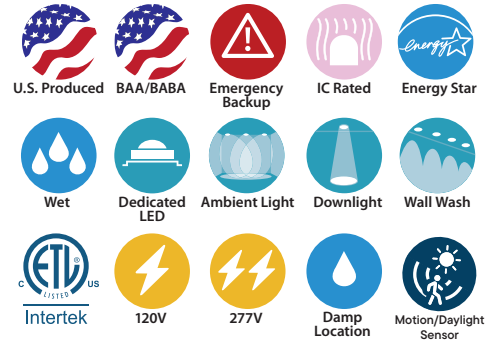


CH4-USA : 4" C-SERIES

LED DOWNLIGHT NEW CONSTRUCTION 1000LM - 3500LM (8W-30W)



Ceiling Cut-out: 4-7/8"
 Ceiling Thickness: 1" Max



• Produced in USA

- Twist and lock reflector for quick access to LED lamp array
- Heavy-duty self-flanged reflector
- Soft even lumen distribution
- No visible screws or hardware

ORDERING : CH4-USA10ICAUE-D10-EM/CR4L17SW-EMA-T30

CH4-USAxx

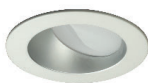
Housing	Insulation Contact	Control	Emergency Options	J-Box	Mounting	Reflector	Reflector Finish	Reflector Options	CCT	Options	
	Housing ¹		Reflector ¹		Reflector Finish		Reflector Options		CCT	Options	
1000lm (8W)	CH4-USA08	[Options]	/CR4L17	Satin Haze Reflector/	SW	None	Blank	2700K (80 CRI)	-T27	None	Blank
1800lm (18W)	CH4-USA10	[Options]	/CR4L17	White Finish		Integral EM	-EMA³	3000K (80 CRI)	-T30	4.5" Ceiling Thickness	-CT4
2300lm (22W)	CH4-USA18	[Options]	/CR4L17	White Reflector/	WW	Switch		3500K (80 CRI)	-T35		
2700lm (28W)	CH4-USA28	[Options]	/CR4L17	White Finish				4000K (80 CRI)	-T40		
3000lm (28W)	CH4-USA29	[Options]	/CR4L30	All Black	BB			5000K (80 CRI)	-T50⁷		
3500lm (30W)	CH4-USA30	[Options]	/CR4L30	Clear Specular Reflector/White Finish	CW						
		Options		All Satin Haze	SS						
	Insulation Contact	Control ²	Emergency Options	J-Box	Mounting						
	Non-IC Blank	Non-Dimming (120V) Blank	10W Emergency Battery EM	None	24" Adjustable Blank						
	IC Rated/Airtight ICA⁵	TRIAC/ELV Dimming (120V) -DIN		Junction Box (Chicago Plenum) -CHP	Architectural -BWNG⁴						
		0-10V Dimming (120V/277V) UE-D10			C-Channel						

202602.04

¹ Housing must match corresponding Reflector in column to right.
² All drivers are 120V/277V unless otherwise noted.
³ Only available for EM Housings.
⁴ (-BWNG) option does **NOT** include Hanger Bars Hanger Bars ordered separately.
⁵ (ICA) is only available on CH4-USA08, CH4-USA10 and CH4-USA18. (CH4-USA28, CH4-USA29 and CH4-USA30 are Non-IC rated.)
⁶ (-347-D10) not available for CH4-USA08.
⁷ (-T50) not available for CH4-USA29 and CH4-USA30.
⁸ Only available with CH4-USA08.

COMPATABILITY

P-CR472
 Wall Wash for 4"



VR800
 Outdoor Vandal Resistant Kit



SPECIFICATION

Application

Architectural/Commercial-grade recessed lensed LED downlight housing for medium to high ceilings in commercial and architectural spaces.

Mounting

Housing suitable for new construction installations only, supplied with (2) 24" adjustable hanger bars with 90° repositioning ability. Suitable for wood & metal joist support systems, and also drywall & T-bar ceilings. Hanger bars equipped with nail-less install 3/4" serrated barbed studs and captive nails, for faster and easier secure mounting in wood joists. Set-screws lock into position and prevent shifting after installation. Earthquake structural cable compatible for drop panel ceiling or any other mounting that requires direct support from structural ceilings. Optional galvanized aluminum Architectural C-Channel Batwing also available. (C260) & (C260J) hanger bars are **NOT included** with (-BWNG) option, and must be ordered separately.

Control

120V/277V AC 50/60Hz Electronic Direct Current Class 2. Input current 0.50 Amps at 115VAC. Power Factor > 0.90. Operating Temperature: -20°C to +50°C / -4°F to +131°F. Accessible from above or below ceiling.

(UE-D10) 0-10V dimming works with most 5-wire, 0-10V dimmers. Factory qualified for use with Leviton IP710-DLZ.

(UE-DUN) Uni-Dim™ dimming option is a universal dimming system that works with most 3-wire ELV, 2-wire incandescent and 120V/277V 5-wire 0-10V fluorescent dimmers.

(-DIN) dimming option smoothly dims down to 5% of initial light output with flicker-free performance. Works with standard 120V incandescent dimmers.

(UE-DHL) Lutron HiLume is a 3-wire driver that provides smooth, continuous 1% dimming for virtually any LED fixture.

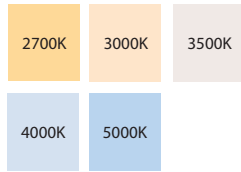
(UE-ECO) Works with Lutron EcoSystem digital controls. Precision microprocessor control and integral thermal management deliver energy savings and extended product life.

(-347-D10) is a 0-10V driver that takes 347V input.

(UE-D10P1) 0-10V dims down to 1% and works with most 120V/277V, 5-wire, 0-10V dimmers.

SPECIFICATION (Continued)

Color Temperature



Available in 2700K, 3000K, 3500K, 4000K and 5000K.

Insulation Contact

Non-IC rated housing must be kept 3" from loose-fill insulation. IC-Rated/Airtight (ICA) option is for direct insulation contact.

Power Connection

LED lamp array is replaceable via on board quick disconnect terminal. Meets CA Title 24 Requirements and other standards restricting the use of Medium Base or Bi-Pin Sockets.

Thermal Management

Heat dissipation facilitated by a large exposed integral aluminum heat sink to maximize heat dissipation in an open-air environment. IC Option thermally engineered to ensure stated L70 LED life without the need for external box. The recommended ambient temperature should be below 35°C (95°F) to achieve a minimum L70 life of 50,000 hours according to the LM80 standard.

Reflector

Field adjustable twist and lock reflector is easily removable for both Non-IC and IC rated housings to provide quick access to LED lamp array. Frosted polycarbonate lens pre-installed on reflector unifies diode sources and protects diodes from dust and particles from front of aperture. Optional reflector (-EMA) features integral EM switch for 10W emergency backup (UE-D10-EM).

Reflector Finish

1-piece, self-flanged, dual reflector LED design provides a clean trim finish without secondary trim ring. Heavy gauge aluminum reflector prevents ugly dents during shipping & installation. Deeply mounted singular LED provides 50° visual cutoff. Available in Satin Haze Reflector/White Finish, White Reflector/White Finish, All Black, Clear Specular Reflector White Finish, and All Satin Haze.

Junction Box

16-gauge pre-wired galvanized steel Junction Box, 26 cubic-inch for a maximum of (8) #12 AWG wires. Furnished with (7) 1/2" knockouts. Strain clamps to install or remove covers for easy access and ground wire. (-CHP) option is Chicago Plenum, air-tight Junction Box.

SPECIFICATION (Continued)**Airflow**

IC-Rated/Airtight (ICA) reflector design is designed to restrict air flow from room into plenums in compliance to the WSEC - Washington State Energy Code, (Less than 2.0 CFM -Cubic Feet per Minute).

Certifications and Listings

cETLus listed to UL1598 and UL8750. Suitable for dry, damp and wet locations.
NYC approved: Calendar #41937.

Caution

LITON recommends use of surge protectors on the power entering LED Housings. Surge damage is not covered by warranty. (+1KV). Fixtures must be grounded in accordance with national, state and/or local electrical codes. Failure to do so may result in serious personal injury.

Warranty

Covered by a 5-Year Warranty to be free of defects in materials and craftsmanship. Recommended for applications where ambient temperatures do not exceed 35°C (95°F), installations exceeding this temperature will result in reduced LED lamp life and a voided warranty.

Energy Star Qualified Items

/CR4L17_-T30
/CR4L17_-T35
/CR4L17_-T40

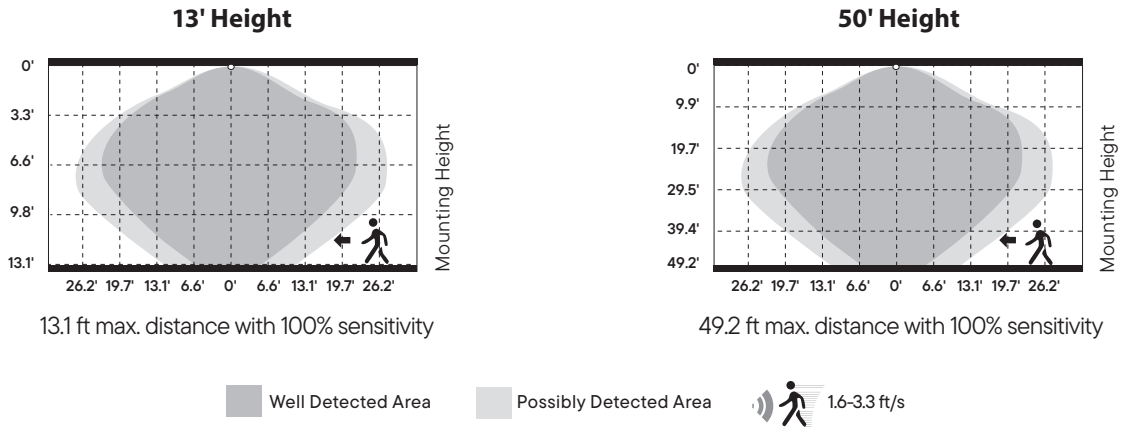
Emergency Options

Emergency LED Battery Back-up available, remotely mounted adjacent to housing by installer. When AC power fails, in the event of a power failure, the device immediately switches to the emergency mode, and operates the existing fixture for 90 minutes. Remote test switch and plate cover included. Optional Generator Transfer Device switches the driver to auxiliary generator power during the loss of normal AC power, (recommended for applications requiring individual circuit switching).

SPECIFICATION (Continued)

Unisense™ PROGRAMMABLE MOTION + DAYLIGHT (-SUN-RMT, -SUN-RMT-1227)

- Microwave and PIR (Passive Infrared) sensors depending on option
- Daylight harvesting
- Dusk/dawn sensing capabilities
- Motion Sensor



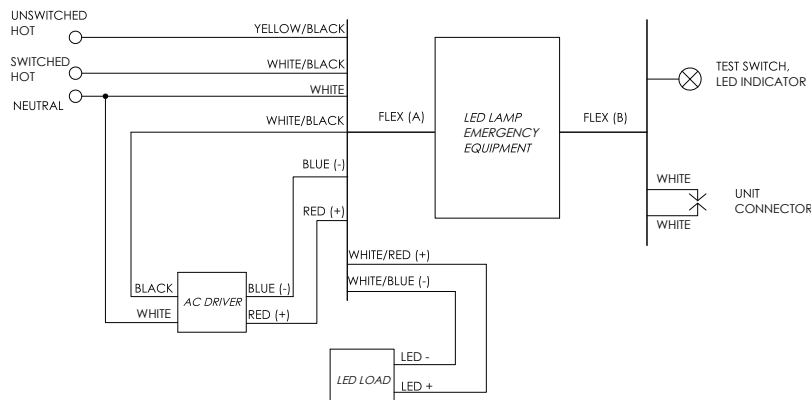
EMERGENCY BATTERY (-EM): 10W

- Must be installed in Dry Locations
- 10W constant output to LED lamp

Not rated for outdoor mounting. Damp location rated.

-EM Lumen Data (Battery)

Fixture/Trim	CH4-USA08/CR4L17	Fixture/Trim	CH4-USA10/CR4L17	Fixture/Trim	CH4-USA18/CR4L17
Fixture Wattage:	8W	Fixture Wattage:	18W	Fixture Wattage:	22W
Fixture Lumens:	1000	Fixture Lumens:	1800	Fixture Lumens:	2300
Multiplier:	1.25	Multiplier:	0.56	Multiplier:	0.45
EM Lumens:	1250	EM Lumens:	1000	EM Lumens:	1030
Fixture/Trim	CH4-USA28/CR4L17	Fixture/Trim	CH4-USA29/CR4L30	Fixture/Trim	CH4-USA30/CR4L30
Fixture Wattage:	28W	Fixture Wattage:	28W	Fixture Wattage:	30W
Fixture Lumens:	2700	Fixture Lumens:	3000	Fixture Lumens:	3500
Multiplier:	0.36	Multiplier:	0.36	Multiplier:	0.33
EM Lumens:	970	EM Lumens:	1080	EM Lumens:	1150



Input Voltage:	120-277VAC/60Hz
Output Voltage:	10W
Wattage:	10W
Switching Time:	<1s
Charging Time:	24h
Operating Time:	90 minutes
Minimum Temperature:	0°C
Maximum Temperature:	50°C
Self-Diagnostic:	No

SPECIFICATION (Continued)

FULL POWER EMERGENCY INVERTER (-EMAC or -EMAC347): 8W - 30W

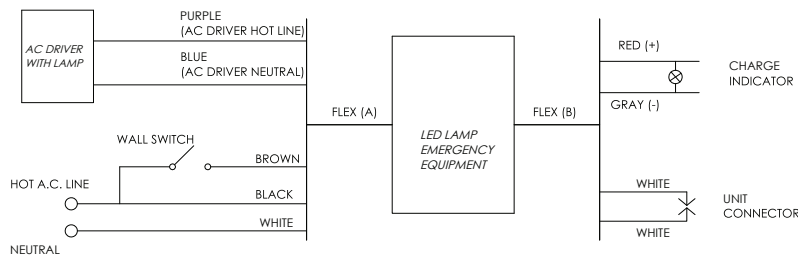
- Must be installed in Dry Locations
- Wattage package will determine battery sent; corresponding wiring diagrams below
- 170 VDC output to AC DRIVER during EM mode

Not rated for outdoor mounting. Damp location rated.

-EMAC Lumen Data (Battery)

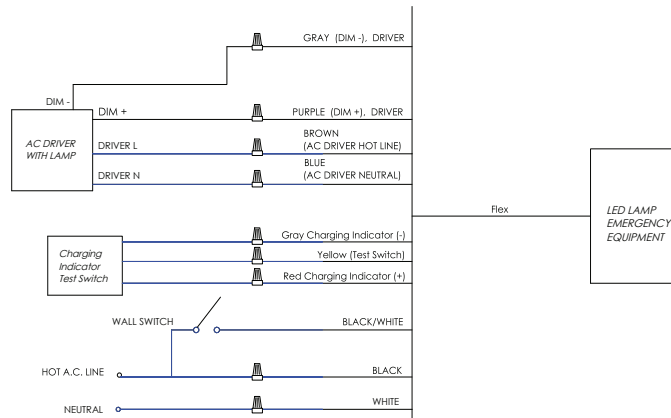
Fixture/Trim	CH4-USA08/CR4L17	Fixture/Trim	CH4-USA10/CR4L17	Fixture/Trim	CH4-USA18/CR4L17
Fixture Wattage:	8W	Fixture Wattage:	18W	Fixture Wattage:	22W
Fixture Lumens:	1000	Fixture Lumens:	1800	Fixture Lumens:	2300
EM Lumens:	1000	EM Lumens:	1800	EM Lumens:	2300
Fixture/Trim	CH4-USA28/CR4L17	Fixture/Trim	CH4-USA29/CR4L30	Fixture/Trim	CH4-USA30/CR4L30
Fixture Wattage:	28W	Fixture Wattage:	28W	Fixture Wattage:	30W
Fixture Lumens:	2700	Fixture Lumens:	3000	Fixture Lumens:	3500
EM Lumens:	2700	EM Lumens:	3000	EM Lumens:	3500

<25W LOAD



Input Voltage:	120-277VAC/60Hz
Output Voltage:	170VDC (120VAC Equivalent)
Wattage:	25W
Switching Time:	<1s
Charging Time:	24h
Operating Time:	90 minutes
Minimum Temperature:	0°C
Maximum Temperature:	50°C
Self-Diagnostic:	No

<40W LOAD

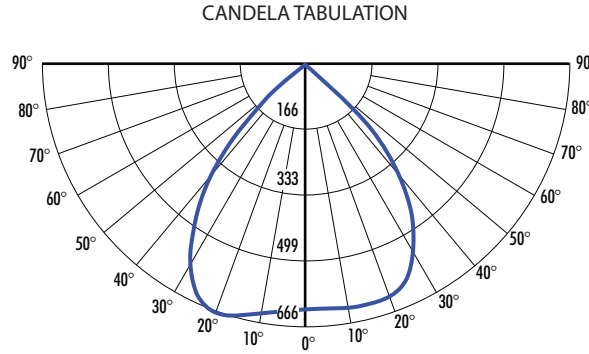


Input Voltage:	120-277VAC or 347VAC/60Hz
Output Voltage:	170VDC (120VAC Equivalent)
Wattage:	30W
Switching Time:	<1s
Charging Time:	24h
Operating Time:	90 minutes
Minimum Temperature:	0°C
Maximum Temperature:	50°C
Self-Diagnostic:	Yes

PHOTOMETRY

CH4-USA08UE-D10_CR4L17CW-T40 (1000lm, 8W, 4000K)

System Power:	11W	MULTIPLIERS
Test Date:	09/2023	REFLECTOR FINISH
Beam Angle 50%:	83.6°	CW : 1.00
Field Angle 10%:	107.2°	SS : 0.90
Color Temperature:	3916K	SW : 0.88
CRI:	83.9	WW : 0.66
Lumens Delivered:	1075	CCT
CBCP:	665.3	2700K : 1.04
Power Factor:	0.99	3000K : 1.01
		3500K : 1.12
		4000K : 1.00

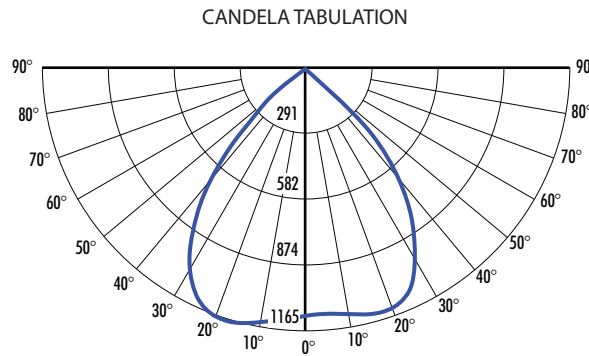


FOOTCANDLE DISTRIBUTION

Height	Beam Diameter	FC
8.0'	14.31'	9.67
10.0'	17.88'	6.19
12.0'	21.46'	4.30
14.0'	25.03'	3.16
16.0'	28.61'	2.42

CH4-USA10UE-D10_CR4L17CW-T40 (1800lm, 18W, 4000K)

System Power:	18W	MULTIPLIERS
Test Date:	09/2023	REFLECTOR FINISH
Beam Angle 50%:	84.2°	CW : 1.00
Field Angle 10%:	108.0°	SS : 0.90
Color Temperature:	3866K	SW : 0.88
CRI:	82.6	WW : 0.66
Lumens Delivered:	1928	CCT
CBCP:	1164	2700K : 1.04
Power Factor:	0.99	3000K : 1.01
		3500K : 1.12
		4000K : 1.00

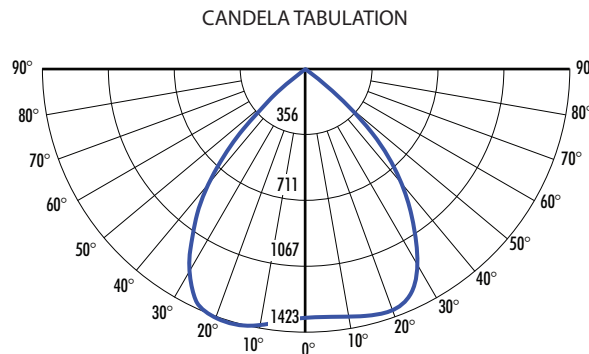


FOOTCANDLE DISTRIBUTION

Height	Beam Diameter	FC
8.0'	14.46'	17.06
10.0'	18.07'	10.92
12.0'	21.69'	7.61
14.0'	25.30'	5.59
16.0'	28.91'	4.28

CH4-USA18UE-D10_CR4L17CW-T40 (2300lm, 22W, 4000K)

System Power:	22W	MULTIPLIERS
Test Date:	09/2023	REFLECTOR FINISH
Beam Angle 50%:	84.3°	CW : 1.00
Field Angle 10%:	107.9°	SS : 0.90
Color Temperature:	3873K	SW : 0.88
CRI:	82.4	WW : 0.66
Lumens Delivered:	2355	CCT
CBCP:	1421.3	2700K : 1.04
Power Factor:	0.99	3000K : 1.01
		3500K : 1.12
		4000K : 1.00

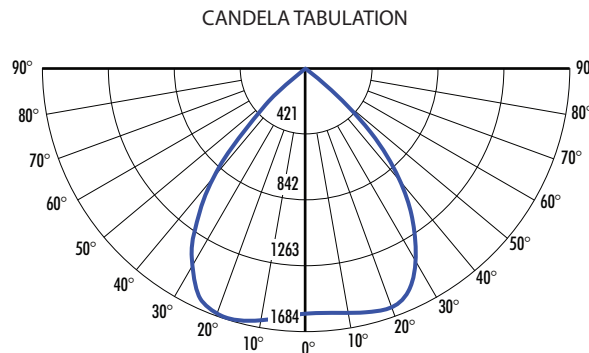


FOOTCANDLE DISTRIBUTION

Height	Beam Diameter	FC
8.0'	14.48'	20.83
10.0'	18.10'	13.33
12.0'	21.72'	9.29
14.0'	25.34'	6.83
16.0'	28.96'	5.23

CH4-USA28UE-D10_CR4L17CW-T40 (2700lm, 28W, 4000K)

System Power:	28W	MULTIPLIERS
Test Date:	09/2023	REFLECTOR FINISH
Beam Angle 50%:	84.2°	CW : 1.00
Field Angle 10%:	108.0°	SS : 0.90
Color Temperature:	3889K	SW : 0.88
CRI:	82.3	WW : 0.66
Lumens Delivered:	2785	CCT
CBCP:	1682.6	2700K : 1.04
Power Factor:	0.99	3000K : 1.01
		3500K : 1.12
		4000K : 1.00



FOOTCANDLE DISTRIBUTION

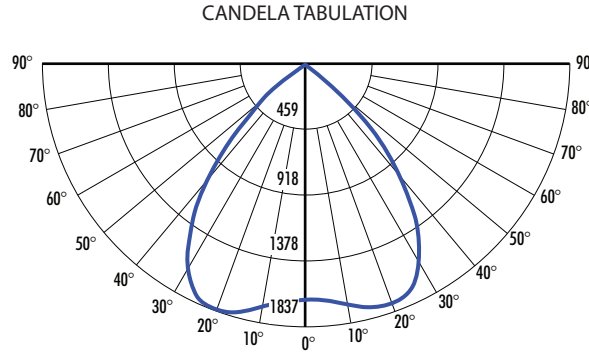
Height	Beam Diameter	FC
8.0'	14.46'	24.66
10.0'	18.07'	15.78
12.0'	21.69'	10.99
14.0'	25.30'	8.08
16.0'	28.91'	6.18

2024.01.23

PHOTOMETRY (Continued)

CH4-USA29UE-D10_CR4L30CW-T40 (3000lm, 28W, 4000K)

System Power:	24W	MULTIPLIERS
Test Date:	09/2023	REFLECTOR FINISH
Beam Angle 50%:	83.9°	CW : 1.00
Field Angle 10%:	107.8°	SS : 0.90
Color Temperature:	3956K	SW : 0.88
CRI:	13.06	WW : 0.66
Lumens Delivered:	3039	CCT
CBCP:	1833.7	2700K : 1.04
Power Factor:	0.99	3000K : 1.01
		3500K : 1.12
		4000K : 1.00

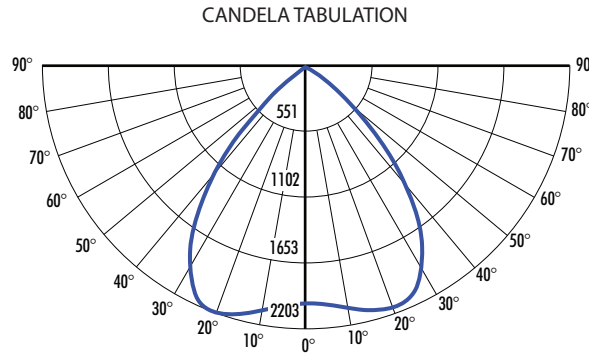


FOOTCANDLE DISTRIBUTION

Height	Beam Diameter	FC
8.0'	14.38'	31.14
10.0'	17.98'	19.93
12.0'	21.57'	13.86
14.0'	25.17'	10.18
16.0'	28.76'	7.80

CH4-USA30UE-D10_CR4L30CW-T40 (3500lm, 30W, 4000K)

System Power:	30W	MULTIPLIERS
Test Date:	09/2023	REFLECTOR FINISH
Beam Angle 50%:	83.9°	CW : 1.00
Field Angle 10%:	107.9°	SS : 0.90
Color Temperature:	3866K	SW : 0.88
CRI:	82.6	WW : 0.66
Lumens Delivered:	3656	CCT
CBCP:	2200	2700K : 1.04
Power Factor:	0.99	3000K : 1.01
		3500K : 1.12
		4000K : 1.00



FOOTCANDLE DISTRIBUTION

Height	Beam Diameter	FC
8.0'	14.38'	17.06
10.0'	17.98'	10.92
12.0'	21.57'	7.61
14.0'	25.17'	5.59
16.0'	28.76'	4.28