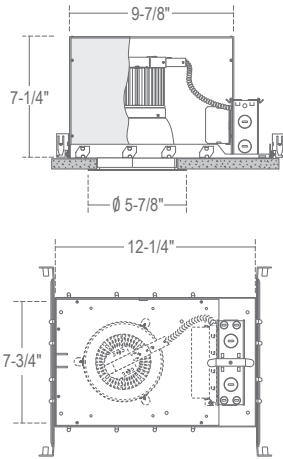
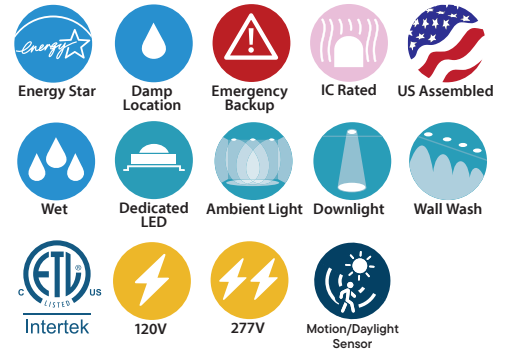


CH4IC : 4" C·SERIES

4" TYPE IC DOWNLIGHT NEW CONSTRUCTION 1000LM - 3500LM (8W-30W)



Ceiling Cut-Out: 4-7/8"
 Ceiling Thickness: 1" Max.



- IC rated housing
- Twist and lock reflector for quick access to LED lamp array
- Heavy-duty self-flanged reflector
- Soft even lumen distribution
- No visible screws or hardware

ORDERING : CH410ICUE-D10-EMAC/CR4L17SW-EMA-T30

CH4xxIC		J-Box		Reflector		CCT		Options			
Housing	Control	Emergency Options	J-Box	Reflector	Reflector Finish	Reflector Option	CCT	Options	Options		
Housing ¹		Reflector ¹		Reflector Finish		Reflector Option		CCT		Options	
1000lm (8W)	CH408IC	[Options]		/CR4L17	Satin Haze Reflector/	SW	None	Blank	2700K (84 CRI) -T27	None	Blank
1800lm (18W)	CH410IC	[Options]		/CR4L17	White Finish		Integral EM	-EMA³	3000K (84 CRI) -T30	4.5" Ceiling	-CT4
2300lm (22W)	CH418IC	[Options]		/CR4L17	White Reflector/	WW	Switch		3500K (84 CRI) -T35	Thickness	
2700lm (28W)	CH428IC	[Options]		/CR4L17	White Finish				4000K (84 CRI) -T40		
3000lm (28W)	CH429IC	[Options]		/CR4L30	All Black	BB			5000K (84 CRI) -T50		
3500lm (30W)	CH430IC	[Options]		/CR4L30	Clear Specular Reflector/White Finish	CW					
	Options				All Satin Haze Reflector Finish	SS					
Control ²		Emergency Options ⁸		J-Box							
0-10V Dimming	UE-D10	None	Blank	None	Blank	None	Blank	None	Blank	None	Blank
UniDim™ 0-10V, TRIAC/ELV Dimming	UE-DUN	10W Emergency Battery	-EM	Junction Box (Chicago Plenum)	-CHP						
TRIAC/ELV Dimming (120V)	-DIN	Full Power Emergency Inverter	-EMAC⁷								
Lutron Hi-Lume	UE-DHL	Full Power Emergency Inverter (347V)	-EMAC347⁷								
Lutron EcoSystem	UE-ECO	GTD Device	-GTD								
0-10V Dimming (347V)	-347-D10⁶										
1%, 0-10V Dimming (1%)	UE-D10P1										
0-10V Dimming with 10W Emergency Backup	UE-D10-EMA^{3,9}										
DMX Dimming with input via XLR5 (120V/277V)	UE-DMXLR5										
DMX Dimming with input via RJ45 (120V/277V)	UE-DMXRJ45										
Athena Wireless Node (120V)	-AWN										
Athena Wireless Node	-AWN-OCC										
Occupancy Sensor (120V)											
UniSense - Remotely Mounted Motion/Photosensor (120V)	-SUN-RMT⁵										
UniSense - Remotely Mounted Motion/Photosensor	-SUN-RMT-1227⁵										
Casambi Wireless Dimming	-DCSM⁴										
BubblyNet Wireless System	-DBNT⁴										
Lutron Vive Wireless Dimming Module	-VIVE⁴										

¹ Housing must match corresponding Reflector in column to right.
² All drivers are 120V/277V unless otherwise noted.
³ (UE-D10-EMA) must be ordered with Integral EM Switch Option (-EMA).
⁴ Special Order.
⁵ (-SUN-RMT) sensor sent with mounting clips for existing ceiling applications.
⁶ (-347-D10) not available for CH408IC.
⁷ Check Wiring Diagrams.
⁸ All EM/EMAC/EMAC347/GTD must have access above ceiling.
⁹ UE-D10-EMA is not compatible with -EM or -EMAC or -EMAC347 or -GTD.

COMPATABILITY

VR800
 Outdoor Vandal Resistant Ceiling/Wall Kit



SPECIFICATION

Application

Architectural/Commercial-grade recessed lensed LED downlight housing for medium to high ceilings in commercial and architectural spaces.

Mounting

Housing suitable for new construction installations only, supplied with (2) 24" adjustable hanger bars with 90° repositioning ability. Suitable for wood & metal joist support systems, and also drywall & T-bar ceilings. Hanger bars equipped with nail-less install 3/4" serrated barbed studs and captive nails, for faster and easier secure mounting in wood joists. Set-screws lock into position and prevent shifting after installation. Earthquake structural cable compatible for drop panel ceiling or any other mounting that requires direct support from structural ceilings.

Driver

120V/277V AC 50/60Hz Electronic Direct Current Class 2. Input current 0.50 Amps at 115VAC. Power Factor > 0.90. Operating Temperature: -20°C to +50°C / -4°F to +131°F. Accessible from above or below ceiling.

(UE-D10) 0-10V dimming works with most 5-wire, 0-10V dimmers. Factory qualified for use with Leviton IP710-DLZ.

(UE-DUN) Uni-Dim™ dimming option is a universal dimming system that works with most 3-wire ELV, 2-wire incandescent and 120V/277V 5-wire 0-10V fluorescent dimmers.

(-DIN) dimming option smoothly dims down to 5% of initial light output with flicker-free performance. Works with standard 120V incandescent dimmers.

(UE-DHL) Lutron HiLume is a 3-wire driver that provides smooth, continuous 1% dimming for virtually any LED fixture.

(UE-ECO) Works with Lutron EcoSystem digital controls. Precision microprocessor control and integral thermal management deliver energy savings and extended product life. (-347) is a 0-10V driver that takes 347V input.

(UE-D10P1) 0-10V dims down to 1% and works with most 120V/277V, 5-wire, 0-10V dimmers.

Emergency Options

Emergency LED Battery Back-up available, remotely mounted adjacent to housing by installer. When AC power fails, the device immediately switches to the emergency mode, operating the LEDs for a minimum of 90 minutes. Remote test switch and plate cover included. Optional Generator Transfer Device switches the driver to auxiliary generator power during the loss of normal AC power, (recommended for applications requiring individual circuit switching).

Color Temperature

Available in 2700K, 3000K, 3500K, 4000K and 5000K.

Insulation Contact

IC rated housing rated for direct contact with low to medium density loosefill blown and rolled insulation.

Power Connection

LED lamp array is replaceable via on board quick disconnect terminal. Meets CA Title 24 Requirements and other standards restricting the use of Medium Base or Bi-Pin Sockets.

Thermal Management

Heat dissipation facilitated by a large exposed integral aluminum heat sink to maximize heat dissipation in an open-air environment. IC Option thermally engineered to ensure stated L70 LED life without the need for external box. The recommended ambient temperature should be below 35°C to achieve a minimum L70 life of 50,000 hours according to the LM80 standard.

Reflector

Field adjustable twist and lock reflector is easily removable to provide quick access to LED lamp array. Frosted polycarbonate lens pre-installed on reflector unifies diode sources and protects diodes from dust and particles from front of aperture. Optional reflector (-EMA) features integral EM switch for 12W emergency backup (UE-D10-EM).

Reflector Finish

1-piece, self-flanged, dual reflector LED design enables a clean trim finish without secondary trim ring. Heavy gauge aluminum reflector prevents ugly dents during shipping & installation. Deeply mounted singular LED provides 50° visual cutoff. Available in Satin Haze Reflector/White Finish, White Reflector/White Finish, All Black, Clear Specular Reflector/White Finish, and All Satin Haze.

Junction Box

16-gauge pre-wired galvanized steel Junction Box, 26 cubic-inch for a maximum of (8) #12 AWG wires. Furnished with (7) 1/2" knockouts. Strain clamps to install or remove covers for easy access and ground wire. (-CHP) option is Chicago Plenum, air-tight Junction Box.

Airflow

IC-Rated/Airtight (ICA) reflector design is designed to restrict air flow from room into plenums in compliance to the WSEC - Washington State Energy Code, (Less than 2.0 CFM -Cubic Feet per Minute).

Certifications and Listings

cETLus listed. Suitable for dry, damp, and wet locations. NYC approved. Calendar #41937. Conforms to City of Chicago Environmental Air CCEA-200 with Section 18-27-300.22 and special requirements Section 14-20-210C-4. Assembled in USA

Caution

LITON recommends use of surge protectors on the power entering LED Housings. Surge damage is not covered by warranty. (+1KV). Fixtures must be grounded in accordance with national, state and/or local electrical codes. Failure to do so may result in serious personal injury.

Warranty

Covered by a 5-Year Warranty to be free of defects in materials and craftsmanship. Recommended for applications where ambient temperatures do not exceed 35°C, installations exceeding this temperature will result in reduced LED lamp life and a voided warranty.

Energy Star Qualified Items

/CR4L17_-T30

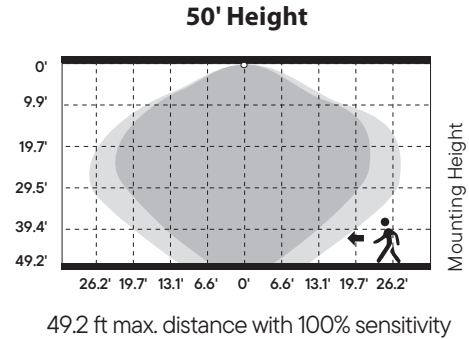
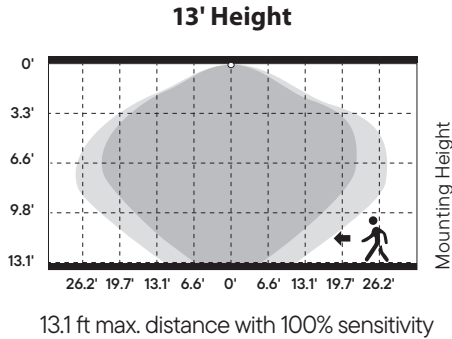
/CR4L17_-T35

/CR4L17_-T40

SPECIFICATION

Unisense™ PROGRAMMABLE MOTION + DAYLIGHT (-SUN-RMT, -SUN-RMT-1227)

- Microwave and PIR (Passive Infrared) sensors depending on option
- Daylight harvesting
- Dusk/dawn sensing capabilities
- Motion Sensor



EMERGENCY BATTERY (-EM): 10W

- Must be installed in Dry Locations
- 10W constant output to LED lamp

Not rated for outdoor mounting. Damp location rated.

-EM Lumen Data (Battery)

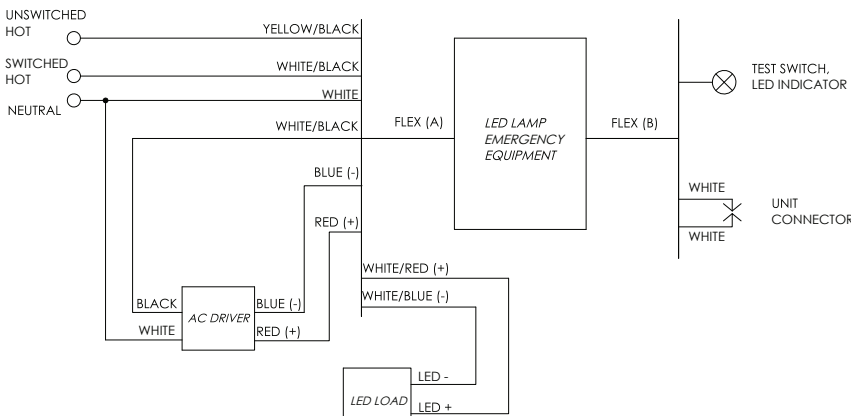
Fixture/Trim	CH408IC/CR4L17
Fixture Wattage:	8W
Fixture Lumens:	1000
Multiplier:	1.25
EM Lumens:	1250

Fixture/Trim	CH410IC/CR4L17
Fixture Wattage:	17W
Fixture Lumens:	1600
Multiplier:	0.59
EM Lumens:	940

Fixture/Trim	CH418IC/CR4L17
Fixture Wattage:	22W
Fixture Lumens:	1900
Multiplier:	0.45
EM Lumens:	850

Fixture/Trim	CH428IC/CR4L17
Fixture Wattage:	28W
Fixture Lumens:	2300
Multiplier:	0.36
EM Lumens:	830

Fixture/Trim	CH428IC/CR4L30
Fixture Wattage:	28W
Fixture Lumens:	3000
Multiplier:	0.36
EM Lumens:	1080



Input Voltage:	120-277VAC/60Hz
Output Voltage:	10W
Wattage:	10W
Switching Time:	<1s
Charging Time:	24h
Operating Time:	90 minutes
Minimum Temperature:	0°C
Maximum Temperature:	50°C
Self-Diagnostic:	No

SPECIFICATION (Continued)

Emergency Options

When AC power fails, provides 90 minutes of power to the luminaire. In the event of a power failure, the LED Emergency backup switches to the emergency mode and operates the existing fixture for 90 minutes.

FULL POWER EMERGENCY INVERTER (-EMAC or -EMAC347): 8W - 28W

- Must be installed in Dry Locations
- Wattage package will determine battery sent; corresponding wiring diagrams below
- 170 VDC output to AC DRIVER during EM mode

Not rated for outdoor mounting. Damp location rated.

-EMAC Lumen Data (Battery)

Fixture/Trim	CH408IC/CR4L17
Fixture Wattage:	8W
Fixture Lumens:	1000
EM Lumens:	1000

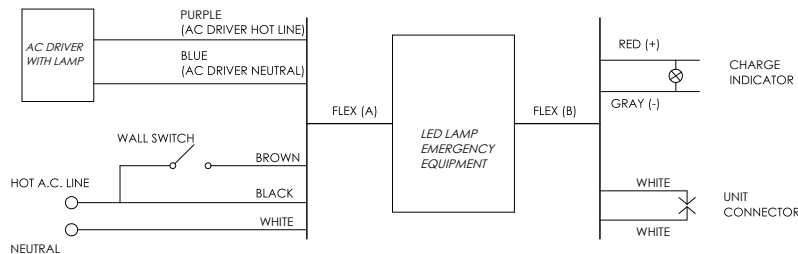
Fixture/Trim	CH410IC/CR4L17
Fixture Wattage:	17W
Fixture Lumens:	1600
EM Lumens:	1600

Fixture/Trim	CH418IC/CR4L17
Fixture Wattage:	22W
Fixture Lumens:	1900
EM Lumens:	1900

Fixture/Trim	CH428IC/CR4L17
Fixture Wattage:	28W
Fixture Lumens:	2300
EM Lumens:	2300

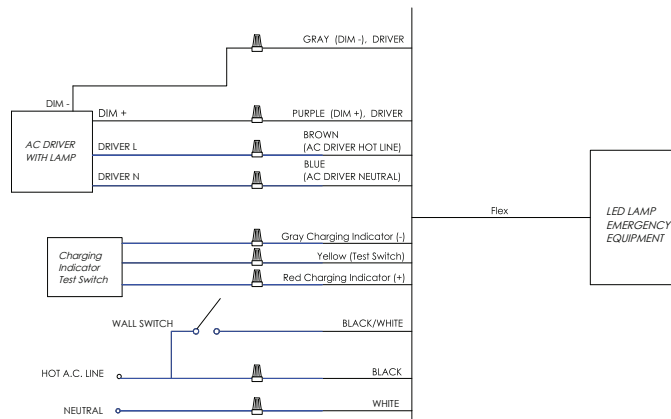
Fixture/Trim	CH428IC/CR4L30
Fixture Wattage:	28W
Fixture Lumens:	3000
EM Lumens:	3000

<25W LOAD



Input Voltage:	120-277VAC/60Hz
Output Voltage:	170VDC (120VAC Equivalent)
Wattage:	25W
Switching Time:	<1s
Charging Time:	24h
Operating Time:	90 minutes
Minimum Temperature:	0°C
Maximum Temperature:	50°C
Self-Diagnostic:	No

<40W LOAD



Input Voltage:	120-277VAC or 347VAC/60Hz
Output Voltage:	170VDC (120VAC Equivalent)
Wattage:	28W
Switching Time:	<1s
Charging Time:	24h
Operating Time:	90 minutes
Minimum Temperature:	0°C
Maximum Temperature:	50°C
Self-Diagnostic:	Yes