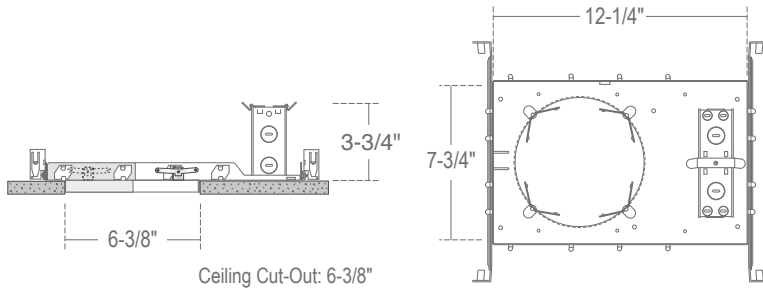


## CH6-FRM - 6" C-SERIES NEW CONSTRUCTION HOUSING FRAME



### SPECIFICATION

**Application:** Commercial-grade recessed LED downlight housing for medium to high ceilings in commercial and architectural spaces.

**Mounting:** : Housing suitable for new construction installations only, supplied with (2) 24" adjustable hanger bars with 90 degrees repositioning ability. Hanger bars equipped with nail-less install 3/4" serrated barbed studs and with captive nails, for faster and easier secure mounting in wood joists. Set-screws lock into position and prevent shifting after installation. Earthquake structural cable compatible for drop panel ceiling or any other mounting that requires direct support from structural ceilings.

**Safety Labels:** ETL/cETL listed to UL1598 and UL8750. Suitable for dry, damp and wet locations. NYC approved: Calendar #41937.

### COMPATIBILITY

 <b>LRCLD602</b> 6" ARCHITECTURAL SHALLOW LED RETROFIT 1200/1900LM	 <b>LRCLD678</b> 6" ARCHITECTURAL SHALLOW LED RETROFIT 650/1200LM	 <b>LRCELD602</b> 6" COMMERCIAL LED SHALLOW LED RETROFIT 1000LM
 <b>LRALD6</b> 6" ARCHITECTURAL LED RETROFIT 1400/2000/3000/4000LM	 <b>LRCLD7</b> 6"/7" SHALLOW LED RETROFIT 2100LM	 <b>VR800</b> OUTDOOR VANDAL RESISTANT CEILING /WALL KIT

Note: Wattage limitations on compatible items must be met.

### FEATURE:

