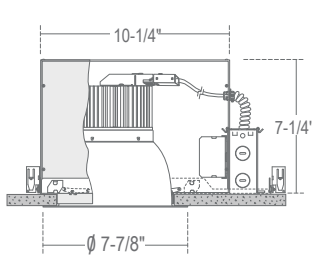


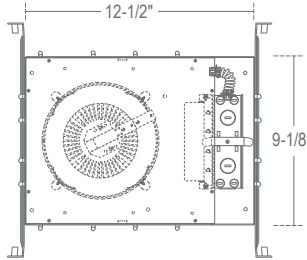
CH6IC : C-SERIES

6" TYPE IC DOWNLIGHT NEW CONSTRUCTION 1000LM - 3600LM (8W-39W)

- IC rated housing
- Twist and lock reflector for quick access to LED lamp array
- Heavy-duty self-flanged reflector
- Soft even lumen distribution
- No visible screws or hardware



Ceiling Cut-Out: 6-3/8"
Ceiling Thickness: 1-1/4" Max.



ORDERING – CH610ICUE-D10-EMAC/CR6L22SW-EMA-T30

CH6xxIC		Emergency Options		J-Box	Reflector	Reflector Finish	Reflector Option	CCT	Options
Housing ¹	Control								
1000lm (8W)	CH608IC [Options]				/CR6L22	Satin Haze Reflector/ White Finish	None	2700K (84 CRI) -T27	None
1800lm (16W)	CH610IC [Options]				/CR6L22	White Reflector/ White Finish	Integral EM Switch	3000K (84 CRI) -T30	4.5" Ceiling Thickness
2200lm (22W)	CH618IC [Options]				/CR6L22	White Reflector/ White Finish		3500K (84 CRI) -T35	
2600lm (27W)	CH628IC [Options]				/CR6L22	White Reflector/ White Finish		4000K (84 CRI) -T40	
3000lm (30W)	CH629IC [Options]				/CR6L30	All Black		5000K (84 CRI) -T50	
3600lm (39W)	CH639IC [Options]				/CR6L30	Clear Specular Reflector/White Finish			
						All Satin Haze Reflector Finish			

Options

Control ²	Emergency Options ⁸	J-Box
0-10V Dimming	None	None
UniDim™ 0-10V, TRIAC/ELV Dimming	Blank	Blank
TRIAC/ELV Dimming (120V)	10W Emergency Battery	Junction Box
Lutron Hi-Lume	Full Power	(Chicago Plenum)
Lutron EcoSystem	Emergency Inverter	
0-10V Dimming (347V)	Full Power	
1%, 0-10V Dimming	Emergency Inverter (347V)	
0-10V Dimming with 10W Integral Emergency Battery Backup	GTD Device	
DMX Dimming with input via XLR5		
DMX Dimming with input via RJ45		
Athena Wireless Node (120V)		
Athena Wireless Node Occupancy Sensor (120V)		
UniSense - Remotely Mounted Motion/Photosensor (120V)		
UniSense - Remotely Mounted Motion/Photosensor		
Casambi Wireless Dimming		
BubblyNet Wireless System		
Lutron Vive Wireless Dimming Module		

¹ Housing must match corresponding Reflector in column to right.
² All drivers are 120V/277V unless otherwise noted.
³ (UE-D10-EMA) must be ordered with Integral EM Switch Option (-EMA).
⁴ Special Order.
⁵ (-SUN-RMT) sensor sent with mounting clips for existing ceiling applications.
⁶ (-347-D10) not available for CH608IC.
⁷ Check Wiring Diagrams.
⁸ All EM/EMAC/EMAC347/GTD must have access above ceiling.
⁹ UE-D10-EMA is not compatible with -EM or -EMAC or -EMAC347 or -GTD.

COMPATABILITY

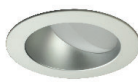
VR800

Outdoor Vandal Resistant Ceiling/Wall Kit



P-CR672SW

Wall Wash for 6"



CR6-GSKT

6" Commercial Self-Adhesive Gasket



SPECIFICATION

Application

Architectural/Commercial-grade recessed lensed LED downlight housing for medium to high ceilings in commercial and architectural spaces.

Mounting

Housing suitable for new construction installations only, supplied with (2) 24" adjustable hanger bars with 90° repositioning ability. Suitable for wood & metal joist support systems, and also drywall & T-bar ceilings. Hanger bars equipped with nail-less install 3/4" serrated barbed studs and captive nails, for faster and easier secure mounting in wood joists. Set-screws lock into position and prevent shifting after installation. Earthquake structural cable compatible for drop panel ceiling or any other mounting that requires direct support from structural ceilings.

Control

120V/277V AC 50/60Hz Electronic Direct Current Class 2. Input current 0.50 Amps at 115VAC. Power Factor > 0.90. Operating Temperature: -20°C to +50°C / -4°F to +131°F. Accessible from above or below ceiling.

(UE-D10) 0-10V dimming works with most 5-wire, 0-10V dimmers. Factory qualified for use with Leviton IP710-DLZ.

(UE-DUN) Uni-Dim™ dimming option is a universal dimming system that works with most 3-wire ELV, 2-wire incandescent and 120V/277V 5-wire 0-10V fluorescent dimmers.

(-DIN) dimming option smoothly dims down to 5% of initial light output with flicker-free performance. Works with standard 120V incandescent dimmers.

(UE-DHL) Lutron HiLume is a 3-wire driver that provides smooth, continuous 1% dimming for virtually any LED fixture.

(UE-ECO) Works with Lutron EcoSystem digital controls. Precision microprocessor control and integral thermal management deliver energy savings and extended product life. (-347) is a 0-10V driver that takes 347V input.

(UE-D10P1) 0-10V dims down to 1% and works with most 120V/277V, 5-wire, 0-10V dimmers.

(UE-D10-EMA) 0-10V dimming with 40W Integral Emergency Backup. Must be ordered with Integral EM Switch option (-EMA).

Emergency Options

Optional Generator Transfer Device switches the driver to auxiliary generator power during the loss of normal AC power, (recommended for applications requiring individual circuit switching).

Color Temperature

Available in 2700K, 3000K, 3500K, 4000K and 5000K.

Insulation Contact

IC rated housing rated for direct contact with low to medium density loosefill blown and rolled insulation.

Power Connection

LED lamp array is replaceable via on board quick disconnect terminal. Meets CA Title 24 Requirements and other standards restricting the use of Medium Base or Bi-Pin Sockets.

Thermal Management

Heat dissipation facilitated by a large exposed integral aluminum heat sink to maximize heat dissipation in an open-air environment. IC Option thermally engineered to ensure stated L70 LED life without the need for external box. The recommended ambient temperature should be below 35°C to achieve a minimum L70 life of 50,000 hours according to the LM80 standard.

Reflector

Field adjustable twist and lock reflector is easily removable to provide quick access to LED lamp array. Frosted polycarbonate lens pre-installed on reflector unifies diode sources and protects diodes from dust and particles from front of aperture. Optional reflector (-EMA) features integral EM switch for 12W emergency backup (UE-D10-EM).

Reflector Finish

1-piece, self-flanged, dual reflector LED design enables a clean trim finish without secondary trim ring. Heavy gauge aluminum reflector prevents ugly dents during shipping & installation. Deeply mounted singular LED provides 50° visual cutoff. Available in Satin Haze Reflector/White Finish, White Reflector/White Finish, All Black, Clear Specular Reflector/White Finish, and All Satin Haze.

Junction Box

16-gauge pre-wired galvanized steel Junction Box, 26 cubic-inch for a maximum of (8) #12 AWG wires. Furnished with (7) 1/2" knockouts. Strain clamps to install or remove covers for easy access and ground wire. (-CHP) option is Chicago Plenum, air-tight Junction Box.

Airflow

IC-Rated/Airtight (ICA) reflector design is designed to restrict air flow from room into plenums in compliance to the WSEC - Washington State Energy Code, (Less than 2.0 CFM -Cubic Feet per Minute).

Certifications and Listings

cETLus listed to UL1598 and UL8750. Suitable for dry, damp, and wet locations. NYC approved: Calendar #41937. Conforms to City of Chicago Environmental Air CCEA-200 with Section 18-27-300.22 and special requirements Section 14-20-210C-4. Assembled in USA

Caution

LITON recommends use of surge protectors on the power entering LED Housings. Surge damage is not covered by warranty. (+1KV). Fixtures must be grounded in accordance with national, state and/or local electrical codes. Failure to do so may result in serious personal injury.

Warranty

Covered by a 5-Year Warranty to be free of defects in materials and craftsmanship. Recommended for applications where ambient temperatures do not exceed 35°C (95°F), installations exceeding this temperature will result in reduced LED lamp life and a voided warranty.

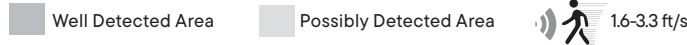
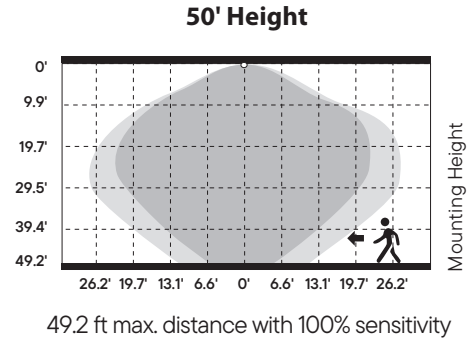
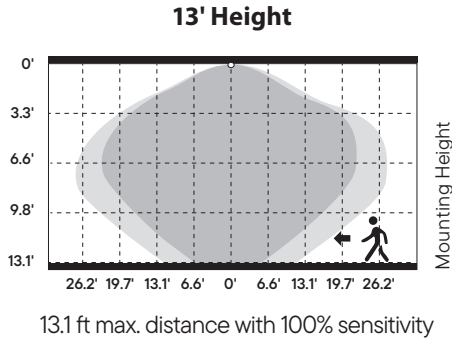
Energy Star Qualified Items

/CR6L22_-T30
/CR6L22_-T35
/CR6L22_-T40

SPECIFICATION

Unisense™ PROGRAMMABLE MOTION + DAYLIGHT (-SUN-RMT, -SUN-RMT-1227)

- Microwave and PIR (Passive Infrared) sensors depending on option
- Daylight harvesting
- Dusk/dawn sensing capabilities
- Motion Sensor



EMERGENCY BATTERY (-EM): 10W

- Must be installed in Dry Locations
- 10W constant output to LED lamp

Not rated for outdoor mounting. Damp location rated.

-EM Lumen Data (Battery)

Fixture/Trim	CH608IC/CR6L22
Fixture Wattage:	8W
Fixture Lumens:	1000
Multiplier:	1.25
EM Lumens:	1250

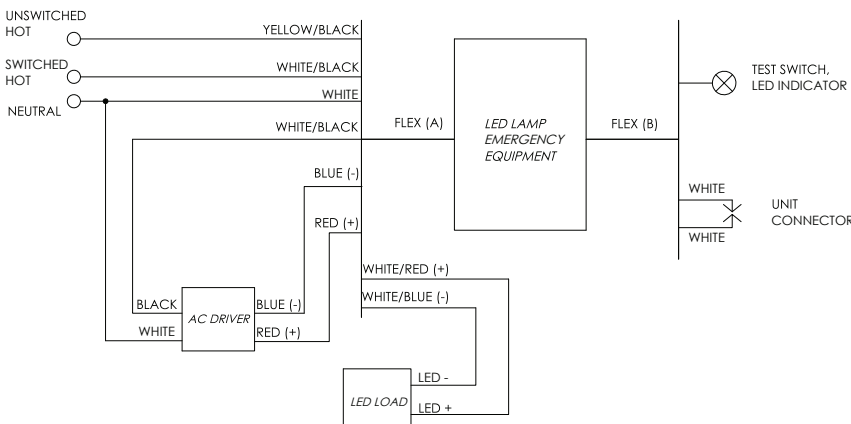
Fixture/Trim	CH610IC/CR6L22
Fixture Wattage:	16W
Fixture Lumens:	1800
Multiplier:	0.63
EM Lumens:	1130

Fixture/Trim	CH618IC/CR6L22
Fixture Wattage:	22W
Fixture Lumens:	2200
Multiplier:	0.45
EM Lumens:	990

Fixture/Trim	CH628IC/CR6L22
Fixture Wattage:	27W
Fixture Lumens:	2600
Multiplier:	0.37
EM Lumens:	960

Fixture/Trim	CH629IC/CR6L30
Fixture Wattage:	30W
Fixture Lumens:	3000
Multiplier:	0.33
EM Lumens:	990

Fixture/Trim	CH639IC/CR6L30
Fixture Wattage:	39W
Fixture Lumens:	3600
Multiplier:	0.26
EM Lumens:	940



Input Voltage:	120-277VAC/60Hz
Output Voltage:	10W
Wattage:	10W
Switching Time:	<1s
Charging Time:	24h
Operating Time:	90 minutes
Minimum Temperature:	0°C
Maximum Temperature:	50°C
Self-Diagnostic:	No

SPECIFICATION (Continued)

Emergency Options

When AC power fails, provides 90 minutes of power to the luminaire. In the event of a power failure, the LED Emergency backup switches to the emergency mode and operates the existing fixture for 90 minutes.

FULL POWER EMERGENCY INVERTER (-EMAC or -EMAC347): 8W - 39W

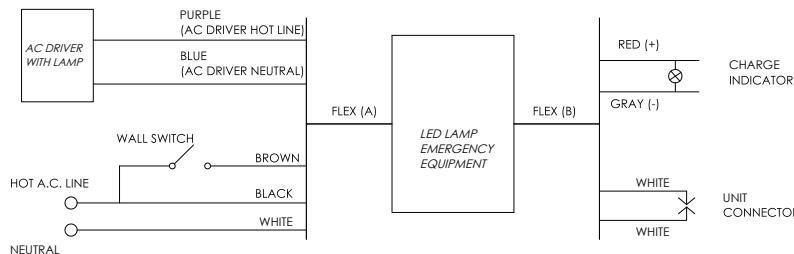
- Must be installed in Dry Locations
- Wattage package will determine battery sent; corresponding wiring diagrams below
- 170 VDC output to AC DRIVER during EM mode

Not rated for outdoor mounting. Damp location rated.

-EMAC Lumen Data (Battery)

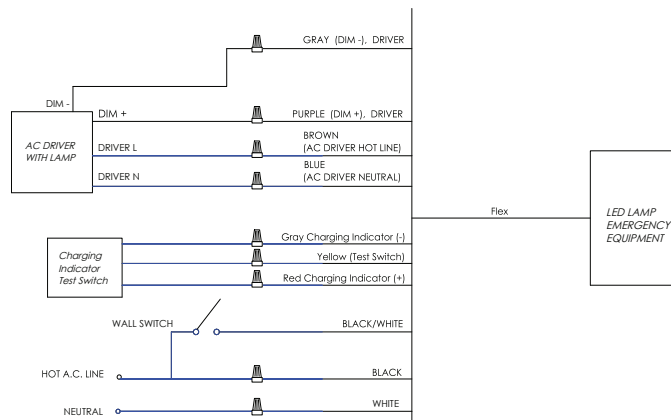
Fixture/Trim	CH608IC/CR6L22	Fixture/Trim	CH610IC/CR6L22	Fixture/Trim	CH618IC/CR6L22
Fixture Wattage:	8W	Fixture Wattage:	16W	Fixture Wattage:	22W
Fixture Lumens:	1000	Fixture Lumens:	1800	Fixture Lumens:	2200
EM Lumens:	1000	EM Lumens:	1800	EM Lumens:	2200
Fixture/Trim	CH628IC/CR6L22	Fixture/Trim	CH629IC/CR6L30	Fixture/Trim	CH639IC/CR6L30
Fixture Wattage:	27W	Fixture Wattage:	30W	Fixture Wattage:	39W
Fixture Lumens:	2600	Fixture Lumens:	3000	Fixture Lumens:	3600
EM Lumens:	2600	EM Lumens:	3000	EM Lumens:	3600

<25W LOAD



Input Voltage:	120-277VAC/60Hz
Output Voltage:	170VDC (120VAC Equivalent)
Wattage:	25W
Switching Time:	<1s
Charging Time:	24h
Operating Time:	90 minutes
Minimum Temperature:	0°C
Maximum Temperature:	50°C
Self-Diagnostic:	No

<40W LOAD



Input Voltage:	120-277VAC or 347VAC/60Hz
Output Voltage:	170VDC (120VAC Equivalent)
Wattage:	39W
Switching Time:	<1s
Charging Time:	24h
Operating Time:	90 minutes
Minimum Temperature:	0°C
Maximum Temperature:	50°C
Self-Diagnostic:	Yes