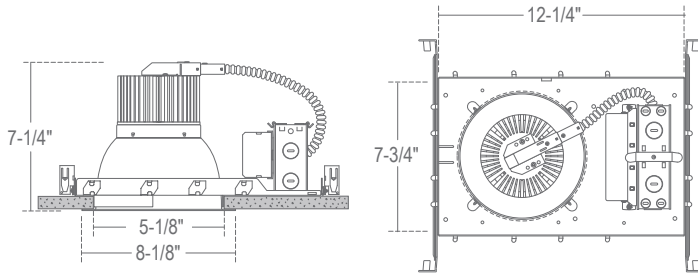
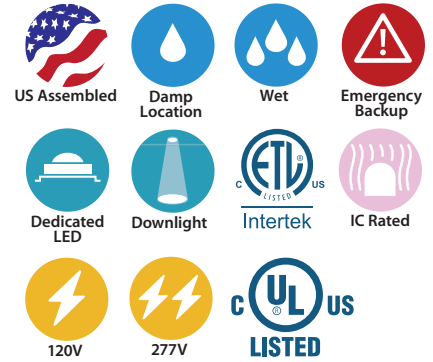


## CR612 - 6" C-SERIES

WET LOCATION LED DOWNLIGHT, 400LM - 2500LM (10W-48W)



Ceiling Cut-out: 6-3/8"  
 Ceiling Thickness: 1" Max



- Suitable for dry, damp, or wet locations
- Albalite lens with non-conductive, dead-front flange ring produces strong, vibrant light
- No visible screws or hardware

### ORDERING : CR612L22W-T27/CH610ICAUE-D10-CHP-BWNG

#### CR612L22

Reflector	Flange Finish	Color Temperature	Housing	Housing Option	Driver Option	Emergency Option	Junction Box	Hanger Bar Option
400lm <b>CR612L22</b> [Options]			Non-IC	<b>Blank</b>	0-10V Dimming	<b>UE-D10</b>	None	<b>Blank</b>
700lm <b>CR612L22</b> [Options]			ICA Rated	<b>ICA</b> <sup>3</sup>	UniDim™ 120V/277V	<b>UE-DUN</b>	12W Emerg. Back-Up	<b>-EM</b>
1000lm <b>CR612L22</b> [Options]					0-10V ELV and Triac Dimming		Remote Location Emergency System	<b>-EMAC</b> <sup>2</sup>
1380lm <b>CR612L36</b> [Options]					120V ELV and Triac Dimming	<b>-DIN</b>	GTD Device	<b>-GTD</b>
1700lm <b>CR612L36</b> [Options]								Hanger Bar Option
1840lm <b>CR612L40</b> [Options]								24" Adjustable <b>Blank</b>
2500lm <b>CR612L53</b> [Options]								Architectural C-Channel <b>-BWNG</b>

#### Options

Flange Finish	Color Temperature
White <b>W</b>	2700K (84 CRI) <b>-T27</b>
All Black <b>B</b>	3000K (84 CRI) <b>-T30</b>
	3500K (84 CRI) <b>-T35</b>
	4000K (84 CRI) <b>-T40</b>

<sup>1</sup> Reflector must match corresponding Housing in column immediately to right  
<sup>2</sup> Only available for CH610, CH618, and CH628  
<sup>3</sup> Only available for CH610 and CH618

2024.04.01

## SPECIFICATION

### Application

Architectural/Commercial-grade recessed lensed LED downlight housing that is an excellent choice for showers or bathrooms, producing a strong vibrant light without drawing attention to the source.

### Mounting

Housing suitable for new construction installations only, supplied with (2) 24" adjustable hanger bars with 90° repositioning ability. Suitable for wood & metal joist support systems, and also drywall & T-bar ceilings. Hanger bars equipped with nail-less install 3/4" serrated barbed studs and captive nails, for faster and easier secure mounting in wood joists. Set-screws lock into position and prevent shifting after installation. Earthquake structural cable compatible for drop panel ceiling or any other mounting that requires direct support from structural ceilings. Optional galvanized aluminum Architectural C-Channel (-BWNG) batwing hanger bar also available.

### Driver

120V/277V AC 50/60Hz Electronic Direct Current Class 2. Input current 0.50 Amps at 115VAC. Power Factor > 0.90. Operating Temperature: -20°C to +50°C / -4°F to +131°F. Accessible from above or below ceiling. Uni-Dim™ dimming option (UE-DUN) is a universal dimming system that works with most 3-wire ELV, 2-wire incandescent and 5-wire 0-10V fluorescent dimmers. (-DIN) dimming option smoothly dims down to 5% of initial light output with flicker-free performance. Works with standard incandescent dimmers. Standard 0-10V works with most 5-wire, 0-10V dimmers. Factory qualified for use with Leviton IP710-DLZ.

### Emergency Options

Emergency LED Battery Back-up available, remotely mounted adjacent to housing by installer. When AC power fails, the device immediately switches to the emergency mode, operating the LEDs for a minimum of 90 minutes. Remote test switch and plate cover included. Optional Generator Transfer Device switches the driver to auxiliary generator power during the loss of normal AC power, (recommended for applications requiring individual circuit switching).

### Color Temperature

Available in 2700K, 3000K, 3500K, and 4000K.

### Insulation Contact

Non-IC rated housing must be kept 3" from loose-fill insulation. IC rated option for direct insulation contact.

### Power Connection

LED lamp array is replaceable via on board quick disconnect terminal. Meets CA Title 24 Requirements and other standards restricting the use of Medium Base or Bi-Pin Sockets.

### Thermal Management

Heat dissipation facilitated by a large exposed integral aluminum heat sink to maximize heat dissipation in an open air environment. IC Option thermally engineered to ensure stated L70 LED life without the need for external box. The recommended ambient temperature should be below 35°C to achieve a minimum L70 life of 50,000 hours according to the LM80 standard.

### Reflector

Field adjustable twist and lock reflector is easily removable for both Non-IC and IC rated housings to provide quick access to LED lamp array. Albalite lens pre-installed on reflector unifies diode sources and protects diodes from dust and particles from front of aperture. Optional reflector (-EMA) features integral EM switch for 12W emergency backup (UE-D10-EM).

### Flange Finish

Non-conductive, dead-front flange is available in White (W) or Black (B) finish

### Airflow

Airtight reflector design is designed to restrict air flow from room into plenums in compliance to the WSEC - Washington State Energy Code, (Less than 2.0 CFM -Cubic Feet per Minute).

### Junction Box

16 gauge pre-wired galvanized steel Junction Box, 26 cubic-inch for a maximum of (8) #12 AWG wires. Furnished with (7) 1/2" knockouts. Strain clamps to install or remove covers for easy access and ground wire. (-CHP) option is Chicago Plenum, air-tight Junction Box..

### Certifications and Listings

cETLus listed. Suitable for dry, damp, and wet locations. NYC approved. Calendar #41937. Conforms to City of Chicago Environmental Air CCEA-200 with Section 18-27-300.22 and special requirements Section 14-20-210C-4. Assembled in USA.

### Caution

LITON recommends use of surge protectors on the power entering LED Housings. Surge damage is not covered by warranty. (+1KV). Fixtures must be grounded in accordance with national, state and/or local electrical codes. Failure to do so may result in serious personal injury.

### Warranty

Covered by a 5-Year Warranty to be free of defects in materials and craftsmanship. Recommended for applications where ambient temperatures do not exceed 35°C, installations exceeding this temperature will result in reduced LED lamp life and a voided warranty.