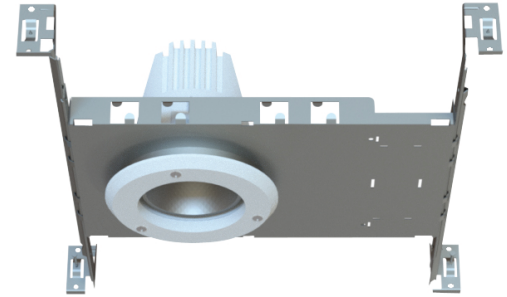
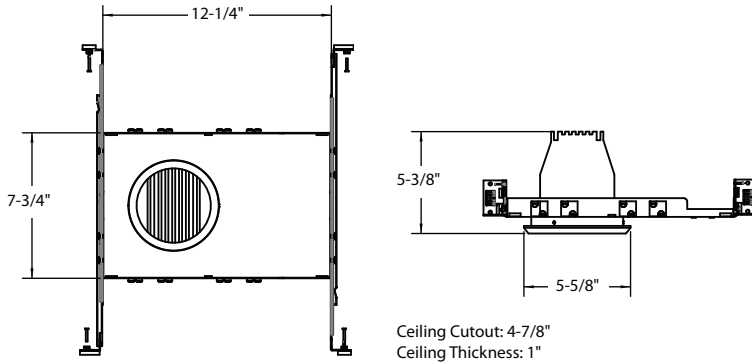


DL34R-FRM - 4" RECESSED VANDAL RESISTANT DOWNLIGHT FRAME-KIT

RECESSED CEILING MOUNT



SPECIFICATION

Application: Recessed downlight frame for medium to high ceilings.

Mounting: Housing suitable for new construction installations only, supplied with (2) 24" adjustable hanger bars with 90 degrees repositioning ability. Suitable for wood & metal joist support systems, as well as drywall and T-bar ceilings. Hanger bars equipped with nail-less install 3/4" serrated barbed studs and with captive nails, for faster and easier secure mounting in wood joists. Screw down mounting screws lock fixture into position and prevent shifting after installation.

COMPATIBILITY



DL34R

**4" RECESSED VANDAL
RESISTANT DOWNLIGHT
(IP67) - 1500LM**

Note: Wattage limitations on compatible items must be met.