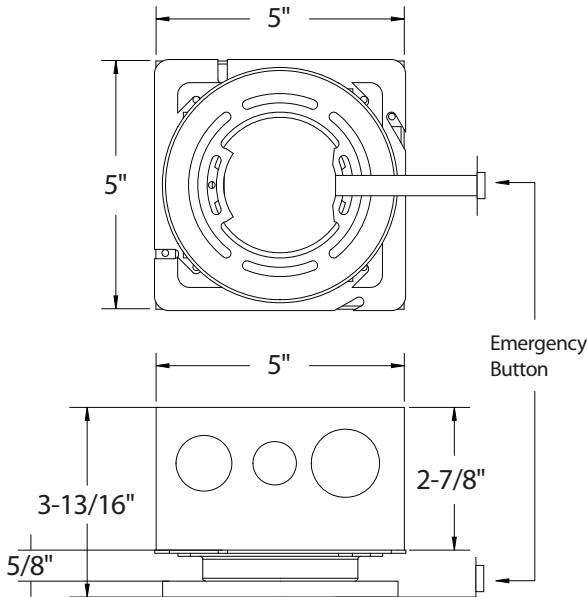


LCMPD-REMA : LUMENPAD RECESSED EMERGENCY BACK UP



- Maintains clean and cohesive ceiling aesthetics.
- Provides reliable emergency illumination for safety and code compliance.
- Reduces installation costs by eliminating blank boxes.
- Ideal for commercial, hospitality, and architectural spaces.
- Built for durability with a long-lasting battery and sturdy construction.
- Simplifies testing and maintenance with built-in controls.

TECHNICAL SPECIFICATIONS:

Output Power	15 Watts (Max)
Input Power	8 Watts (Max)
Output Voltage	100 VAC Only for use with 120V and 120-277V fixtures. This backup cannot be used with 277V only fixtures.
Emergency Operation	≥ 90 minutes
Operating Temp	0°C to 50°C
Input Voltage	120 VAC, 60 Hz
Battery	High Temp Lithium battery 24 Hour Recharge
UL Conditions of Acceptability	Must be factory wired. Battery temperature must not exceed 50°C. Suitable for damp locations, indoors only.

2025.04.03

COMPATABILITY



LCMPD5R
5" LumenPad Round LED
Downlight Surface Mount



LCMPD5Q
5" LumenPad Square LED
Downlight Surface Mount



LCMPD7Q
7" LumenPad Square LED
Downlight Surface Mount



LCMPD7R
7" LumenPad Round LED
Downlight Surface Mount

SPECIFICATION

Description

The LumenPad Recessed Emergency Option is a slim, unobtrusive solution designed to maintain clean ceiling aesthetics while ensuring reliable emergency illumination. By eliminating the need for matching blank boxes, it provides a seamless integration into commercial, hospitality, and architectural spaces.

In the event of a power failure, the LED Emergency backup switches to the emergency mode and operates the existing fixture for 90 minutes. The 100 VAC output during emergency mode supplements the AC LED driver to power the fixture ($\leq 15W$).

The unit contains a battery, charger, and converter circuit in a single enclosure.

Features

- Slim, low-profile design.
- Junction box-free installation, no need for blank boxes.
- Long-life lithium battery high-temperature & recyclable.
- Test switch & charge indicator for easy maintenance and monitoring.
- Supports switched & unswitched fixtures.
- Simple 120VAC hookup.
- Multiple knockouts for wiring flexibility – $7 \times \frac{1}{2}$ ", $6 \times \frac{3}{4}$ ", 4×1 ".
- Meets NEC & Life Safety Code standards.

TYPICAL WIRING DIAGRAM:

