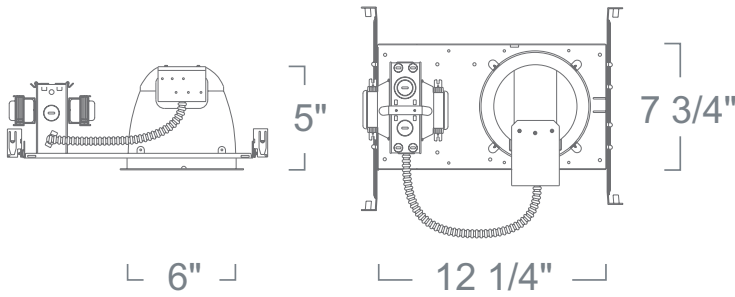


6" Light Commercial Housing (Non-IC) w/ Fire Barrier LFH1&2 SERIES - 6" LIGHT COMMERCIAL CFL HORIZONTAL RECESSED LIGHTING



SPECIFICATION

Ceiling cut-out: 6 1/2"

Application: Light commercial recessed downlight housing for medium to high ceilings for commercial and high-end residential installations. A variety of compatible trim styles and finishes are available to achieve the proper illumination.

Housing & Mounting Frame: 18 gauge galvanized flat frame with powder coat finish for ceiling up to 1 3/4" thick. Supplied with (2) 24" adjustable bar hangers (90 degrees repositioning ability). Bar hangers equipped with (nail-less installation) 3/4" serrated barbed studs for secure mounting in wood joists. Can also be mounted to grid panel ceiling. Earthquake structural cable compatible for drop panel ceiling or any other mounting that requires direct support from structural ceilings.

Ballast: Electronic Class P 60Hz Ballast with Inherent thermal protection. For Double Twin Tube (DTT) or Triple Twin Tube Lamps (TTT). Sound A rated. Micro-Processor controlled. Min. starting temperature -10°C. Accessible from above or below the ceiling. Contact factory for detailed technical information on ballast specifications. Note: For dimming applications must use compatible dimmer switch. Consult specific ballast manufacturer for up-to-date compatibility list.

Socket Cap: Heavy-Duty steel socket enclosure with built-in ventilations. Die-cast aluminum fittings. Accepts compatible reflector trims.

Socket: Thermo-plastic socket UL Listed rated for high temperature and provides nickel plated contacts. Accepts 4-Pin lamps with electronic ballast selection.

Junction Box: 16 gauge pre-wired galvanized steel Junction Box, 32 cubic-inch for a maximum of (8) #12 AWG wires. Furnished with (6) 3/4" and (4) Romex knock-outs. Strain clamps to install or remove covers for easy access and ground wire. Equipped with safety standard fitting for flex-conduit.

Insulation Contact: Non-IC rated housing must be kept 3" from insulation.

Safety Labels: UL/CUL listed for through-branch wiring (8) No.12 AWG 90°C and suitable for damp locations. NYC approved: Calendar #41937.

Emergency Option: Emergency back-up operates one lamp for a minimum of 90 minutes at 750 Lumens in case of power outage. Unit is remotely mounted. It includes battery, charger, and test switch with indicator light. Consult Factory for 1300 Lumen Package.

Label: UL Listed, cETL Listed

Assembled in USA

FEATURE:



This galvanized welded steel enclosure is rated (able) for one-hour resistance to active fire. **LFB2012** enclosure is designed for use with both existing and new installation of Recessed Luminaires. Fulfills the required 1-hour-fire-resistance-rating, to operate as an active fire wall, with less effort.

FEATURES

- 24GA Galvanized welded steel constructed body
- 4 flanges with 3/16" nail/screw openings
- 16"/24" (apart) joist/stud applicable
- (6)1/2" knockouts provided for wire access
- UL/NFPA/ASTM evaluated; ETL certified.

INSTALLATION

The **LFB2012** requires a minimum of 9 1/2" Steel Stud or Wood Joist, and must be spaced either 16" or 24" apart. The Luminaire affixes to the interior of the Fire Barrier, **LFB2012** using self-tapping screws.

OPERATION

Liton's **LFB2012** acts as a physical barrier to stop the progress of an active fire. This one-hour minimum rating enclosure meets that of a typical 3/8" drywall barrier.

This unit eliminates the requirement to specify more costly fire rated luminaires and labor, such as, hand constructed drywall enclosures. Which normally are not consistent of uniform in their construction, as well as their ability to maintain the fire stop.

STANDARD APPROVALS

- ASTM-E119-00a
- UL263
- UBC 7-1
- NFPA 251
- ASI A2.1

Label: cETL Listed

Assembled in USA

6" LIGHT COMMERCIAL HOUSING

LFH CFL

WATTAGE	BALLAST	OPTION
LFH113 : (1) 13W	UD :0-10V Dimming (120V/277V)	Blank :None
LFH118 : (1) 18W	E :Electronic (120V)	-EM :Emergency
LFH126 : (1) 26W	E-27 :Electronic (120V/277V)	-FS :Fuse
LFH132 : (1) 32W		
LFH213 : (2) 13W		
LFH218 : (2) 18W		
LFH226 : (2) 26W		

FIRE BARRIER

LFB2012

INSIDE DIMENSIONS
LFB2012: 19 3/8" X 12" X 9 1/2"

Ordering example: LFH113E-27/LFB2012