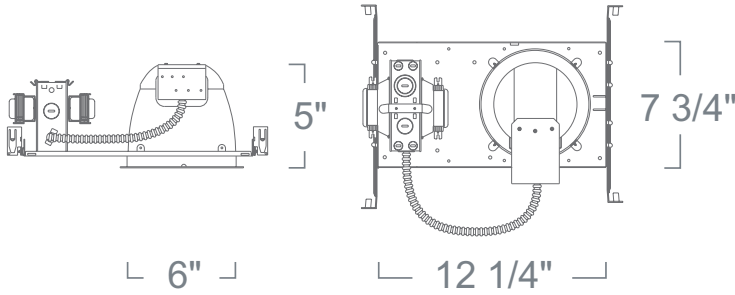


6" Light Commercial Housing (Non-IC) w/ Reflector w/ Eyelid Wall Wash LFH1&2 SERIES - 6" LIGHT COMMERCIAL CFL HORIZONTAL RECESSED LIGHTING



SPECIFICATION

Ceiling cut-out: 6 1/2"

Application: Light commercial recessed downlight housing for medium to high ceilings for commercial and high-end residential installations. A variety of compatible trim styles and finishes are available to achieve the proper illumination.

Housing & Mounting Frame: 18 gauge galvanized flat frame with powder coat finish for ceiling up to 1 3/4" thick. Supplied with (2) 24" adjustable bar hangers (90 degrees repositioning ability). Bar hangers equipped with (nail-less installation) 3/4" serrated barbed studs for secure mounting in wood joists. Can also be mounted to grid panel ceiling. Earthquake structural cable compatible for drop panel ceiling or any other mounting that requires direct support from structural ceilings.

Ballast: Electronic Class P 60Hz Ballast with Inherent thermal protection. For Double Twin Tube (DTT) or Triple Twin Tube Lamps (TTT). Sound A rated. Micro-Processor controlled. Min. starting temperature -10°C. Accessible from above or below the ceiling. Contact factory for detailed technical information on ballast specifications. Note: For dimming applications must use compatible dimmer switch. Consult specific ballast manufacturer for up-to-date compatibility list.

Socket Cap: Heavy-Duty steel socket enclosure with built-in ventilations. Die-cast aluminum fittings. Accepts compatible reflector trims.

Socket: Thermo-plastic socket UL Listed rated for high temperature and provides nickel plated contacts. Accepts 4-Pin lamps with electronic ballast selection.

Junction Box: 16 gauge pre-wired galvanized steel Junction Box, 32 cubic-inch for a maximum of (8) #12 AWG wires. Furnished with (6) 3/4" and (4) Romex knock-outs. Strain clamps to install or remove covers for easy access and ground wire. Equipped with safety standard fitting for flex-conduit.

Insulation Contact: Non-IC rated housing must be kept 3" from insulation.

Safety Labels: UL/CUL listed for through-branch wiring (8) No.12 AWG 90°C and suitable for damp locations. NYC approved: Calendar #41937.

Emergency Option: Emergency back-up operates one lamp for a minimum of 90 minutes at 750 Lumens in case of power outage. Unit is remotely mounted. It includes battery, charger, and test switch with indicator light. Consult Factory for 1300 Lumen Package.

Label: UL Listed, cETL Listed

Assembled in USA

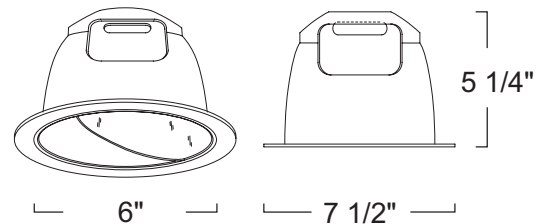
FEATURE:



Application: Light commercial recessed downlight trim for medium to high ceilings for commercial and high-end residential environments installations. Reflector designed for minimal glare from lamp without sacrificing lumen output. Provides wall wash illumination along the vertical surface for lighting signage or to emphasize wall textures. Proper illumination of walls enhances the mood in a room and gives a more spacious feel.

Mounting: Pre-punched key holes allow mounting of socket cap assembly for housing, with vertically adjustable socket cap. Reflector held in place with 6 steel pressure springs mounted on housing frame.

Label: UL Listed, cETL Listed



6" LIGHT COMMERCIAL HOUSING

LFH CFL

WATTAGE	BALLAST	OPTION
LFH113 : (1) 13W	UD :0-10V Dimming (120V/277V)	Blank :None
LFH118 : (1) 18W	E :Electronic (120V)	-EM :Emergency
LFH126 : (1) 26W	E-27 :Electronic (120V/277V)	-FS :Fuse
LFH132 : (1) 32W		
LFH213 : (2) 13W		
LFH218 : (2) 18W		
LFH226 : (2) 26W		

REFLECTOR W/ EYELID WALL WASH

LR667 CFL (2) 26W DTT, (1) 32W TTT

REFLECTOR FINISH	EYELID & FINISH
LR667S :Satin Haze	Blank :White

Ordering example: LFH113E-27/LR667S