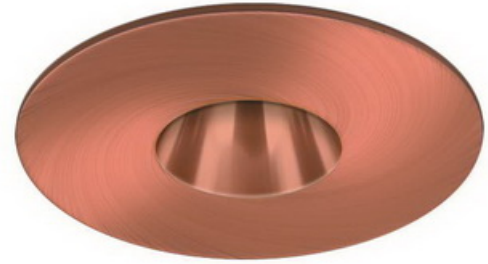
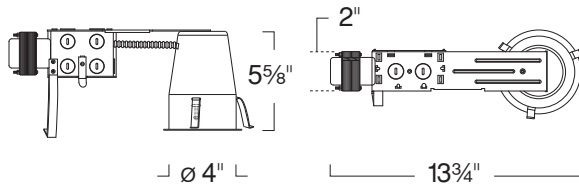


Remodel Housing 120V/277V w/ Pinhole w/ Reflector LH1499 SERIES - 4" LOW VOLTAGE RECESSED LIGHTING



SPECIFICATION

Ceiling cut-out: 4 1/4"

Application: General purpose recessed downlight housing for low to medium height ceilings for residential and light commercial applications. A variety of trims, compatible styles and finishes are available to achieve the desired décor and illumination.

Housing: Pre-wired housing adjusts up to 1 1/4" ceiling thickness. This housing has torsion remodeling clips for secure installation. Integral thermal protector to guard against improper lamping and installation. Trim is secured with torsion wing springs/standard coil springs. Designed to be installed in existing sheet rock ceilings via ceiling cut out (above ceiling access is not required).

Mounting: Housing suitable for existing or new construction installations, supplied with high tension remodeling clips, designed to secure the housing to an existing sheetrock ceiling for fast and easy installation.

Transformer: Class H insulated magnetic transformer installed adjacent to Junction Box, bottom and top accessible. Thermally protected rated for 90°C

Socket: 2-pin porcelain socket with aluminum heat sink plate. Lamp clips to trim to ensure proper and consistent positioning.

Junction Box: 16 gauge pre-wired galvanized steel Junction Box, 32 cubic-inch for a maximum of (8) #12 AWG wires. Furnished with 3/4", 1" and Romex knock-outs. Strain clamps to install or remove covers for easy access and ground wire. Equipped with safety standard fitting for flex-conduit.

Insulation Contact: Non-IC rated housing must be kept 3" from insulation.

Airflow: Airtight option is designed to restrict air flow from room into plenums in compliance to the WSEC - Washington State Energy Code, (Less than 2.0 CFM -Cubic Feet per Minute). Complies to Title24 air flow requirements (Air-tight).

Safety Labels: UL/CUL listed for through-branch wiring (8) No.12 AWG 90°C and suitable for damp locations. NYC approved: Calendar #41937.

Label: UL Listed, cETL Listed

FEATURE:



Application: These narrow aperture beams allow a defined location to be lit without affecting the surrounding surfaces while concealing the lamp image and providing a consistent ceiling appearance. The smaller the aperture the more confined the illumination. **Pinhole** trims provide the type of precise illumination needed for artwork such as paintings and statues. They are also ideal for cozy environments like restaurants and living spaces where glare-free illumination is desired. Aside from accent lighting, they can also be utilized for task lighting applications such as above tables, workspace, cabinetry, and other locations where a directed beam is desired.

Gasket: Supplied with gasket to prevent light leakage and unsightly heat streaks on ceiling surface.

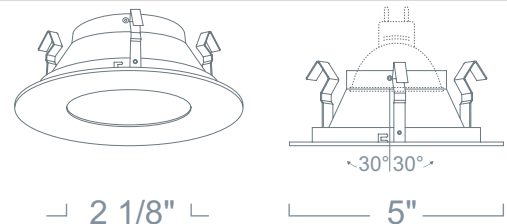
Lens Inclusion: Clear glass protective safety lens included in packaging.

Mounting: Steel pressure springs mounted on trim to ensure positive retention inside housing.

Adjustability Lamp can be tilted 30° degrees vertically.

Accessories: Takes (1) 2" Media.

Label: UL Listed, cETL Listed



REMODEL HOUSING 120V/277V LH1499R 12V Out 75W Max MR16

RATING	WATTAGE	VOLTAGE
LH1499R :Standard	Blank :50W	Blank :120V/12V
LH1499RA :Airtight	-75 :75W	-27 :277V/12V (Electronic*)

* 75W Housing is 6 3/8" tall
Available with 120V/277V Magnetic Option, consult factory

PINHOLE W/ REFLECTOR LR1461 12V 75W Max MR16

REFLECTOR FINISH	RING FINISH
LR1461W :White	Blank :White
LR1461B :Black	B :Black
LR1461C :Clear	C :Chrome
LR1461G :Gold	N :Natural
LR1461CO :All Copper*	CO :Copper
LR1461MO :All Mocha*	MO :Mocha
LR1461S :Satin Haze	

* Comes standard with a matching ring finish. Use "W" for White Ring.

Ordering example: LH1499R/LR1461W