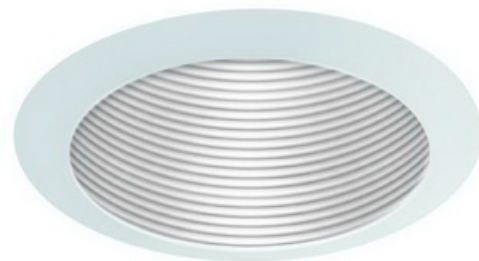
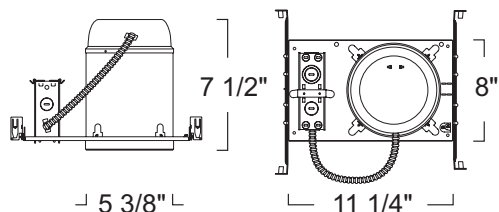


Standard New Construction Housing w/ Metal Baffle w/ Brackets

LH5 SERIES - 5" LINE VOLTAGE RECESSED LIGHTING



SPECIFICATION

Ceiling cut-out: 5 3/4"

Application: General purpose recessed downlight housing for medium to high ceilings for residential and light commercial applications. A variety of trims, compatible styles and finishes are available to achieve the proper décor and illumination.

Housing: Pre-wired housing adjusts up to a 1 1/2" ceiling thickness. Integral thermal protector to guard against improper lamping and installation. Housing provides an adjustable socket plate which allows for use of different lamp types. Trim is secured with torsion wing springs/standard coil springs or serrated clips.

Mounting: Housing suitable for new construction installations only, supplied with (2) 24" adjustable hanger bars with 90 degrees repositioning ability. Hanger bars equipped with nail-less install 3/4" serrated barbed studs and with captive nails, for faster and easier secure mounting in wood joists. Set-screws lock into position and prevent shifting after installation. Earthquake structural cable compatible for drop panel ceiling or any other mounting that requires direct support from structural ceilings.

Socket: Standard porcelain medium screw base socket with high temperature leads.

Junction Box : 16 gauge pre-wired galvanized steel Junction Box, 32 cubic-inch for a maximum of (8) #12 AWG wires. Furnished with (7) 3/4" and (4) Romex knock-outs. Strain clamps to install or remove covers for easy access and ground wire. Equipped with safety standard fitting for flex-conduit.

Insulation Contact: Non IC rated housing must be kept 3" from insulation. IC rated housing rated for direct contact with low to medium density loosefill blown and rolled insulation. For use with high density loose fill blown insulation, reduce rated lamp wattage accordingly (roughly %15-%20).

Airflow: Airtight option is designed to restrict air flow from room into plenums in compliance to the WSEC - Washington State Energy Code, (Less than 2.0 CFM -Cubic Feet per Minute). Complies to Title24 air flow requirements (Air-tight).

Safety Labels: UL/CUL listed for through-branch wiring (8) No.12 AWG 90°C and suitable for damp locations. NYC approved: Calendar #41937.

Label: UL Listed, cETL Listed

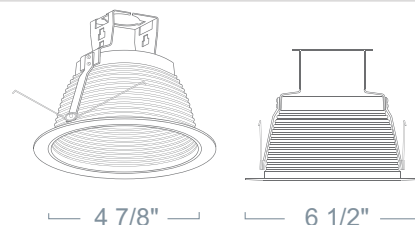
FEATURE:



Application: Used for general ambient lighting. This traditional look of the baffle trim creates proper lighting that can be used in residential, retail, and light commercial applications.

Mounting: Steel pressure springs mounted on trim to ensure positive retention inside housing.

Label: UL Listed, cETL Listed



STANDARD NEW CONSTRUCTION HOUSING

LH5 120V R30/PAR30/A19 MED E26

RATING	WATTAGE	VOLTAGE
LH5 :Standard	Blank :75W	Blank :120V
LH5A :Airport		
LH5ICA :IC-Airtight		

METAL BAFFLE W/ BRACKETS

LR503 120V 75W Max R30/PAR30

BAFFLE FINISH	RING FINISH
LR503W :White	Blank :White
LR503B :Black	B :Black
LR503N :All Natural*	C :Chrome
	G :Gold
	N :Natural
	CO :Copper

* Comes standard with a matching ring finish. Use "W" for White Ring.

Ordering example: LH5A/LR503W