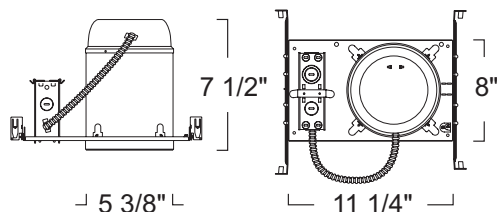


## Standard New Construction Housing w/ Reflector Dome Lens (Dimmable) LH5 SERIES - 5" LINE VOLTAGE RECESSED LIGHTING



### SPECIFICATION

Ceiling cut-out: 5 3/4"

**Application:** General purpose recessed downlight housing for medium to high ceilings for residential and light commercial applications. A variety of trims, compatible styles and finishes are available to achieve the proper décor and illumination.

**Housing:** Pre-wired housing adjusts up to a 1 1/2" ceiling thickness. Integral thermal protector to guard against improper lamping and installation. Housing provides an adjustable socket plate which allows for use of different lamp types. Trim is secured with torsion wing springs/standard coil springs or serrated clips.

**Mounting:** Housing suitable for new construction installations only, supplied with (2) 24" adjustable hanger bars with 90 degrees repositioning ability. Hanger bars equipped with nail-less install 3/4" serrated barbed studs and with captive nails, for faster and easier secure mounting in wood joists. Set-screws lock into position and prevent shifting after installation. Earthquake structural cable compatible for drop panel ceiling or any other mounting that requires direct support from structural ceilings.

**Socket:** Standard porcelain medium screw base socket with high temperature leads.

**Junction Box :** 16 gauge pre-wired galvanized steel Junction Box, 32 cubic-inch for a maximum of (8) #12 AWG wires. Furnished with (7) 3/4" and (4) Romex knock-outs. Strain clamps to install or remove covers for easy access and ground wire. Equipped with safety standard fitting for flex-conduit.

**Insulation Contact:** Non IC rated housing must be kept 3" from insulation. IC rated housing rated for direct contact with low to medium density loosefill blown and rolled insulation. For use with high density loose fill blown insulation, reduce rated lamp wattage accordingly (roughly %15-%20).

**Airflow:** Airtight option is designed to restrict air flow from room into plenums in compliance to the WSEC - Washington State Energy Code, (Less than 2.0 CFM -Cubic Feet per Minute). Complies to Title24 air flow requirements (Air-tight).

**Safety Labels:** UL/CUL listed for through-branch wiring (8) No.12 AWG 90°C and suitable for damp locations. NYC approved: Calendar #41937.

**Label:** UL Listed, cETL Listed

### FEATURE:



**"Application:** 5" Economy 550+ LUMEN LED Downlight Fixture for Retrofit and New construction applications. Qualified as "High Efficacy" for Title 24 by California Energy

**Mounting:** Mounts into standard 5" General Purpose Recessed housing cans with Steel pressure springs mounted on trim to ensure positive retention inside housing. Alternate mounting methods available, consult factory.

**Power Connection:** Comes standard with GU24 socket mounted to top of fixture. Meets CA Title 24 Requirements and other standards restricting the use of Medium Base or Bi-Pin Sockets.

**Driver:** Electronic Direct Current driver mounted on fixture. Comes standard with Incandescent dimming. Smoothly dims down to 5% with standard Incandescent and Low Voltage dimmers. Not recommended for 3-Way Dimmers (ELV Dimming only for -DWM)

**Lumen Maintenance:** Minimum 35,000 hours L70 life based on ANSI TM-21 calculations from LM80 standardized test results.

**Thermal Management:** Effective thermal dissipation facilitated by integral cast-aluminum, finned heat sink design for maximum heat rejection to provide long LED life.

**Color Temperature:** Comes with 3,000K Warm White L.E.D.'s binned according to ANSIC78 377A for color temperature and chromaticity ranges. Available with other color temperatures with ANSI binning between 2700K and 6500K. To order use "-T" Suffix followed by color temperature, consult factory as extended lead times and minimum order quantities apply.

**Safety Labels:** ETL/CETL listed. Suitable for damp locations. NYC approved: Calendar#41937. "

**Warm Dimming:** With this new technology you can create the warm glow of traditional incandescent dimming, while offering extraordinary energy efficiency and service life of LED Lighting. Allow for fixture start at a full 3000K when at full-brightness and smoothly dim down to 5% level with the warm glow of 2200K using ELV dimming.

**Warranty:** Covered by a 3 Year Warranty to be free of defects in materials and craftsmanship. Recommended for applications where ambient temperatures do not exceed 35°C, installations exceeding this temperature will result in reduced LED lamp life and a voided warranty.

### STANDARD NEW CONSTRUCTION HOUSING LH5 120V R30/PAR30/A19 MED E26

RATING	WATTAGE	VOLTAGE
LH5 :Standard	Blank :75W	Blank :120V
LH5A :Airport		
LH5ICA :IC-Airtight		

### REFLECTOR DOME LENS (DIMMABLE) LRELD542 120V LED

REFLECTOR/ FLANGE FINISH	LUMENS	COLOR TEMP
LRELD542C :Clear Reflector/ White Flange	Blank :550 Lumen (13W)	Blank :3000K
LRELD542SN :Satin Haze Reflector/ Natural Flange	-L10 :1000 Lumen (16W)	-DWM :2200K-3000K Warm Dimming*
LRELD542W :White Reflector/ White Flange		-T27 :2700K

\* DWM is only available for 16W Lumen Package

Ordering example: LH5A/LRELD542C-L10Blank