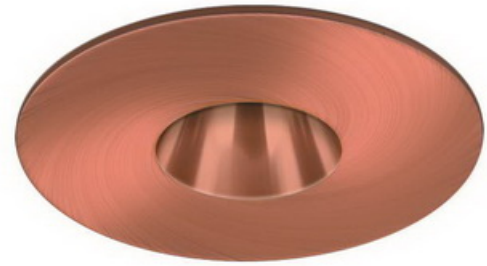
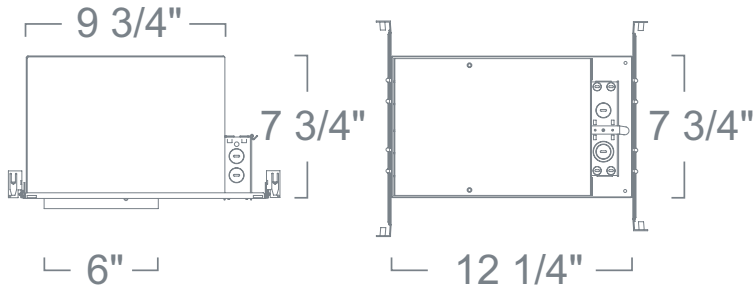


IC Housing w/ Reflector w/ Narrow Aperture LH7LV SERIES - 6" LOW VOLTAGE RECESSED LIGHTING



SPECIFICATION

Ceiling cut-out: 6 1/2"

Housing: Pre-wired housing adjusts up to a 1 1/2" ceiling thickness. Integral thermal protector to guard against improper lamping and installation. Trim is secured with torsion wing springs/standard coil springs.

Mounting: Housing suitable for new construction installations only, supplied with (2) 24" adjustable hanger bars with 90 degrees repositioning ability. Hanger bars equipped with nail-less install 3/4" serrated barbed studs and with captive nails, for faster and easier secure mounting in wood joists. Set-screws lock into position and prevent shifting after installation. Earthquake structural cable compatible for drop panel ceiling or any other mounting that requires direct support from structural ceilings.

Transformer: Class H insulated magnetic transformer installed adjacent to Junction Box, bottom and top accessible. Thermally protected rated for 90°C

Socket: 2-pin porcelain socket with aluminum heat sink plate. Lamp clips to trim to ensure proper and consistent positioning.

Junction Box: 16 gauge pre-wired galvanized steel Junction Box, 25 cubic-inch for a maximum of (8) #12 AWG wires. Furnished with (5) 3/4", (1) 1" and (4) Romex knock-outs. Strain clamps to install or remove covers for easy access and ground wire. Equipped with safety standard fitting for flex-conduit.

Insulation Contact: IC rated housing rated for direct contact with low to medium density loosefill blown and rolled insulation. For use with high density loosefill blown insulation, reduce rated lamp wattage accordingly (roughly %15-%20).

Airflow: Airtight option is designed to restrict air flow from room into plenums in compliance to the WSEC - Washington State Energy Code, (Less than 2.0 CFM -Cubic Feet per Minute). Complies to Title24 air flow requirements (Air-tight).

Safety Labels: UL/CUL listed for through-branch wiring (8) No.12 AWG 90°C and suitable for damp locations. NYC approved: Calendar #41937.

Label: cETL Listed

FEATURE:



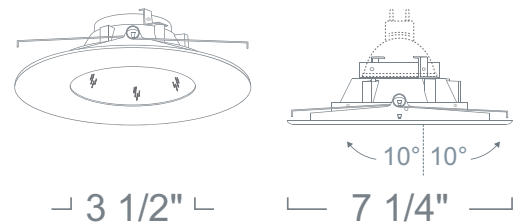
Application: Great for basic area lighting of a room or space, accommodating the type of lighting required to enhance its mood and decor. Narrow Aperture trims are best used when maximum lamp cut-off is desired to maximize a glare-free environment. Perfect for "Task Lighting" where a concentrated beam of light is needed to supplement surrounding light for a more effective work environment.

Mounting: Steel pressure springs mounted on trim to ensure positive retention inside housing.

Adjustability Lamp can be tilted 10° degrees vertically.

Accessories: Takes (1) 2" Media.

Label: cETL Listed



IC HOUSING LH7LVIC

12V 50W Max MR16 GU5.3

RATING	WATTAGE	VOLTAGE
LH7LVIC :IC	Blank :50W	Blank :120V/12V
LH7LVICA :IC-Airtight	-27	:277/12V (Electronic*)

* Available with 120V/277V Magnetic Option, consult factory.

REFLECTOR W/ NARROW APERTURE LR2691

12V 75W Max MR16

REFLECTOR FINISH	RING FINISH
LR2691W :White	Blank :White
LR2691B :Black	B :Black
LR2691C :Clear	N :Natural
LR2691G :Gold	CO :Copper
LR2691CO :All Copper*	
LR2691S :Satin Haze	

* Comes standard with a matching ring finish. Use "W" for White Ring.

Ordering example: LH7LVIC/LR2691W