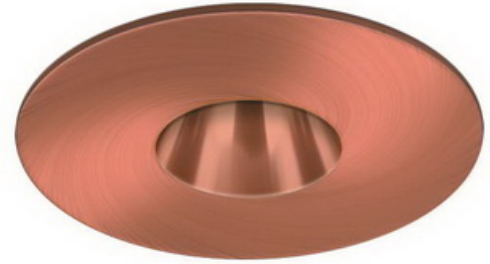
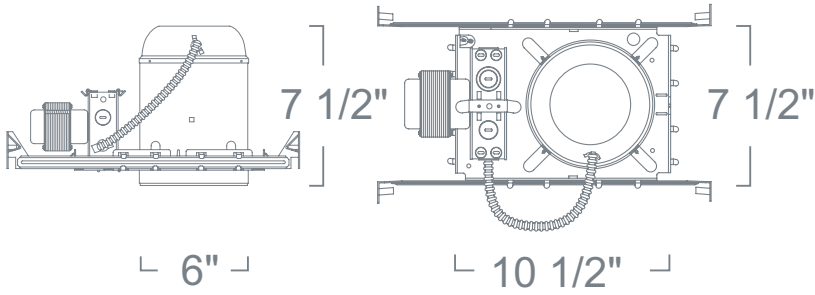


## Standard Housing 120V/277V w/ Reflector w/ Narrow Aperture LH7LV SERIES - 6" LOW VOLTAGE RECESSED LIGHTING



### SPECIFICATION

Ceiling cut-out: 6 1/2"

**Housing:** Pre-wired housing adjusts up to a 1 1/2" ceiling thickness. Integral thermal protector to guard against improper lamping and installation. Trim is secured with torsion wing springs/standard coil springs.

**Mounting:** Housing suitable for new construction installations only, supplied with (2) 24" adjustable hanger bars with 90 degrees repositioning ability. Hanger bars equipped with nail-less install 3/4" serrated barbed studs and with captive nails, for faster and easier secure mounting in wood joists. Set-screws lock into position and prevent shifting after installation. Earthquake structural cable compatible for drop panel ceiling or any other mounting that requires direct support from structural ceilings.

**Transformer:** Class H insulated magnetic transformer installed adjacent to Junction Box, bottom and top accessible. Thermally protected rated for 90° C

**Socket:** 2-pin porcelain socket with aluminum heat sink plate. Lamp clips to trim to ensure proper and consistent positioning.

**Junction Box :** 16 gauge pre-wired galvanized steel Junction Box, 32 cubic-inch for a maximum of (8) #12 AWG wires. Furnished with (7) 3/4" and (4) Romex knock-outs. Strain clamps to install or remove covers for easy access and ground wire. Equipped with safety standard fitting for flex-conduit.

**Insulation Contact:** Non-IC rated housing must be kept 3" from insulation.

**Safety Labels:** UL/CUL listed for through-branch wiring (8) No.12 AWG 90°C and suitable for damp locations. NYC approved: Calendar #41937.

**Label:** cETL Listed

### FEATURE:



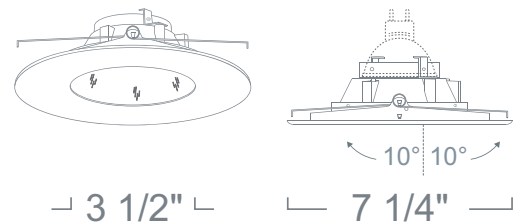
**Application:** Great for basic area lighting of a room or space, accommodating the type of lighting required to enhance its mood and decor. Narrow Aperture trims are best used when maximum lamp cut-off is desired to maximize a glare-free environment. Perfect for "Task Lighting" where a concentrated beam of light is needed to supplement surrounding light for a more effective work environment.

**Mounting:** Steel pressure springs mounted on trim to ensure positive retention inside housing.

**Adjustability** Lamp can be tilted 10° degrees vertically.

**Accessories:** Takes (1) 2" Media.

**Label:** cETL Listed



### STANDARD HOUSING 120V/277V LH7LV 12V MR16 GU5.3

RATING	WATTAGE	VOLTAGE
LH7LV:Standard	Blank :50W -75 :75W	Blank :120V/12V -27 :277V/12V (Electronic*)

\* Available with 120V/277V Magnetic Option, consult factory.

### REFLECTOR W/ NARROW APERTURE LR2691 12V 75W Max MR16

REFLECTOR FINISH	RING FINISH
LR2691W :White	Blank :White
LR2691B :Black	B :Black
LR2691C :Clear	N :Natural
LR2691G :Gold	CO :Copper
LR2691CO :All Copper*	
LR2691S :Satin Haze	

\* Comes standard with a matching ring finish. Use "W" for White Ring.

Ordering example: LH7LV/LR2691W