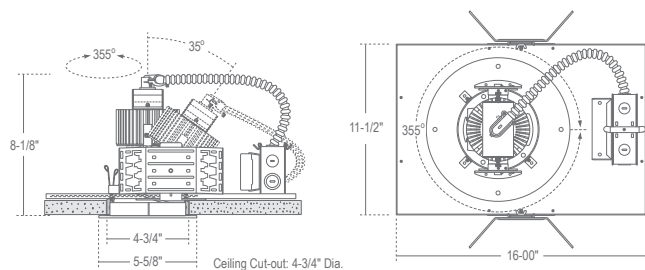


## 4" Round LED Adjustable Downlight w/ 4" LED Lensed Reflector

### 4" LED ARCHITECTURAL DOWNLIGHT



### SPECIFICATION

**Application:** Architectural 4" Adjustable Round LED Housings are designed for medium to high ceiling heights in retail, hospitality, commercial and architectural applications. Advanced 'hot-aiming' mechanism allows precise and lockable positioning of the trim prior to finishing the ceiling. Post-installation adjustment of the beam tilt is possible from below the fixture.

**Adjustability:** Collar bracket provides 30° of rotation, marked in 5° increments for positioning before drywall installation. Lamp holder assembly allows 45° tilt.

**Mounting:** Housing for new construction installations only, Bat-Wing bar hanger brackets adjust vertically 3 1/4" for multiple ceiling types. Heavy-duty steel hanger bars (C260-J) optional. Accepts 1/2" EMT, 26" C-Channel Strut for T-Bar ceilings and 27" adjustable linear bar hangers (optional).

**Driver:** Electronic Direct Current LED driver integrally mounted in electric junction box.

**Dimming:** UniDim (-DUN) option is a universal dimming system that works with most 3-Wire ELV, 2-Wire Incandescent and 5-Wire 0-10V fluorescent dimmers.

**Power Connection:** LED lamp array is replaceable via on board quick disconnect terminal. Meets CA Title 24 Requirements and other standards restricting the use of Medium Base or Bi-Pin Sockets.

**Junction Box:** 16 gauge pre-wired galvanized steel Junction Box, 32 cubic-inch for a maximum of (8) #12 AWG wires. Furnished with (7) 3/4" and (4) Romex knock-outs. Strain clamps to install or remove covers for easy access and ground wire. Equipped with safety standard fitting for flex-conduit.

**Optics:** Interchangeable optics allow polycarbonate lens to be changed in the field to modify beamspread. No tools required.

**Lumen Maintenance:** Minimum 50,000 hours L70 life based on ANSI TM-21 calculations from LM80 standardized test results.

**Thermal Management:** Effective thermal dissipation facilitated by integral cast-aluminum, finned heat sink design for maximum heat rejection to provide long LED life.

**Safety Labels:** ETL/cETL listed. Suitable for dry and damp locations only.

### FEATURE:



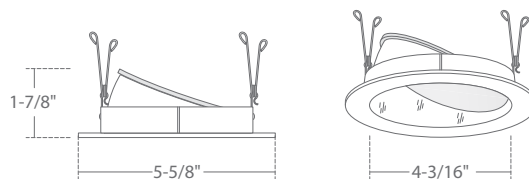
**Application:** Architectural 4" LED Trims feature fully die-cast, seamless construction insuring long lasting beauty and durability. They are designed for medium to high ceiling heights in retail, hospitality, and commercial applications that benefit from linearity and symmetry in modern interior lighting designs.

**Trim Construction:** Trim is built of solid die-cast aluminum for long lasting beauty and durability.

**Lens:** Frosted lens controls glare and eliminates view of lamp. Easy access to lamp mechanism and facilitates trim removal.

**Mounting:** Steel pressure springs mounted on trim to ensure positive retention inside housing.

**Warranty:** Covered by a 5 Year Warranty to be free of defects in materials and craftsmanship. Recommended for applications where ambient temperatures do not exceed 35°C, installations exceeding this temperature will result in reduced LED lamp life and a voided warranty.



### 4" ROUND LED ADJUSTABLE DOWNLIGHT

#### LHAJLD4 120V/277V LED

LUMEN	DIMMING	BEAM SPREAD	LED
LHAJLD415C035:1500lm	UE :120V/277V	Blank :45° Flood	Blank :3000K
LHAJLD420C050:2000lm	UE-DUN :UniDim™ Universal Dimming	-B25 :25° Narrow	-C90 :3000K,90CRI
LHAJLD425C070:2500lm	UE-DUN-EM :UniDim™ Emergency	-B60 :60° Wide Flood	-C97 :3000K,97CRI**
LHAJLD435C105:3500lm	UE-EM :120V/277V Emergency		-T17 :1700K*
LHAJLD450C140:4000lm			-T25 :2500K*
LHAJLD453C140:5000lm			-T27 :2700K
			-T27-C90 :2700K, 90+ CRI
			-T27-C97 :2700K, 90CRI**
			-T35 :3500K
			-T40 :4000K

### 4" LED LENSED REFLECTOR

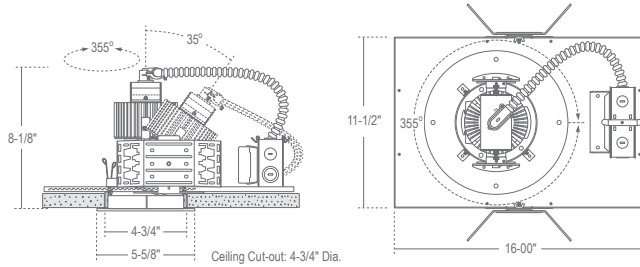
#### LRA471

Ordering example: LHAJLD415C035UE-B25-C97/LRA471WWF

FINISH
/LRA471WWF:All White
/LRA471SSF :All Satin
/LRA471SWF :Satin Haze Reflector/White Flange

\* Extended lead time for quantities over 100.  
\*\*Only available in 2700K and 3000K

## 4" Round LED Adjustable Downlight w/ 4" LED Open Reflector 4" LED ARCHITECTURAL DOWNLIGHT



### SPECIFICATION

**Application:** Architectural 4" Adjustable Round LED Housings are designed for medium to high ceiling heights in retail, hospitality, commercial and architectural applications. Advanced 'hot-aiming' mechanism allows precise and lockable positioning of the trim prior to finishing the ceiling. Post-installation adjustment of the beam tilt is possible from below the fixture.

**Adjustability:** Collar bracket provides 30° of rotation, marked in 5° increments for positioning before drywall installation. Lamp holder assembly allows 45° tilt.

**Mounting:** Housing for new construction installations only, Bat-Wing bar hanger brackets adjust vertically 3 1/4" for multiple ceiling types. Heavy-duty steel hanger bars (C260-J) optional. Accepts 1/2" EMT, 26" C-Channel Strut for T-Bar ceilings and 27" adjustable linear bar hangers (optional).

**Driver:** Electronic Direct Current LED driver integrally mounted in electric junction box.

**Dimming:** UniDim (-DUN) option is a universal dimming system that works with most 3-Wire ELV, 2-Wire Incandescent and 5-Wire 0-10V fluorescent dimmers.

**Power Connection:** LED lamp array is replaceable via on board quick disconnect terminal. Meets CA Title 24 Requirements and other standards restricting the use of Medium Base or Bi-Pin Sockets.

**Junction Box:** 16 gauge pre-wired galvanized steel Junction Box, 32 cubic-inch for a maximum of (8) #12 AWG wires. Furnished with (7) 3/4" and (4) Romex knock-outs. Strain clamps to install or remove covers for easy access and ground wire. Equipped with safety standard fitting for flex-conduit.

**Optics:** Interchangeable optics allow polycarbonate lens to be changed in the field to modify beamspread. No tools required.

**Lumen Maintenance:** Minimum 50,000 hours L70 life based on ANSI TM-21 calculations from LM80 standardized test results.

**Thermal Management:** Effective thermal dissipation facilitated by integral cast-aluminum, finned heat sink design for maximum heat rejection to provide long LED life.

**Safety Labels:** ETL/cETL listed. Suitable for dry and damp locations only.

### FEATURE:



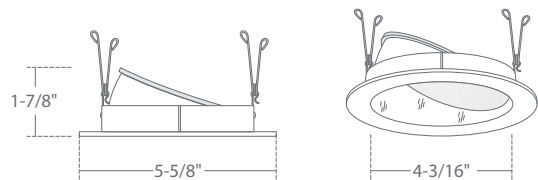
**Application:** Architectural 4" LED Trims feature fully die-cast, seamless construction insuring long lasting beauty and durability. They are designed for medium to high ceiling heights in retail, hospitality, and commercial applications that benefit from linearity and symmetry in modern interior lighting designs.

**Trim Construction:** Trim is built of solid die-cast aluminum for long lasting beauty and durability.

**Lens:** Frosted lens controls glare and eliminates view of lamp. Easy access to lamp mechanism and facilitates trim removal.

**Mounting:** Steel pressure springs mounted on trim to ensure positive retention inside housing.

**Warranty:** Covered by a 5 Year Warranty to be free of defects in materials and craftsmanship. Recommended for applications where ambient temperatures do not exceed 35°C, installations exceeding this temperature will result in reduced LED lamp life and a voided warranty.



### 4" ROUND LED ADJUSTABLE DOWNLIGHT LHAJLD4 120V/277V LED

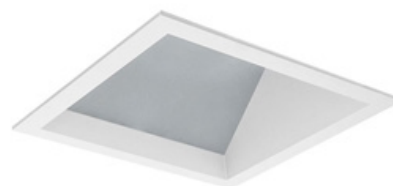
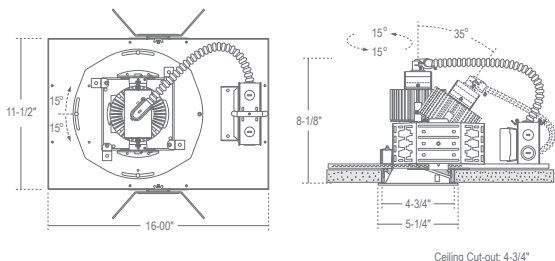
LUMEN	DIMMING	BEAM SPREAD	LED
LHAJLD415C035:1500lm	UE :120V/277V	Blank :45° Flood	Blank :3000K
LHAJLD420C050:2000lm	UE-DUN :UniDim™ Universal Dimming	-B25 :25° Narrow	-C90 :3000K,90CRI
LHAJLD425C070:2500lm	UE-DUN-EM :UniDim™ Emergency	-B60 :60° Wide Flood	-C97 :3000K,97CRI**
LHAJLD435C105:3500lm	UE-EM :120V/277V Emergency		-T17 :1700K*
LHAJLD450C140:4000lm			-T25 :2500K*
LHAJLD453C140:5000lm			-T27 :2700K
			-T27-C90 :2700K, 90 + CRI
			-T27-C97 :2700K, 90CRI**
			-T35 :3500K
			-T40 :4000K

\* Extended lead time for quantities over 100.  
\*\*Only available in 2700K and 3000K

### 4" LED OPEN REFLECTOR LRA471 Ordering example: LHAJLD415C035UE-B25/LRA471WWF

FINISH
/LRA471WWF:All White
/LRA471SSF :All Satin Haze
/LRA471SWF :Satin Haze Reflector/White Flange

## 4" Square LED Adjustable Downlight w/ 4" LED Square Lensed Wall Wash/Sloped 4" LED ARCHITECTURAL DOWNLIGHT



### SPECIFICATION

**Application:** Architectural 4" Square LED Housings are designed for medium to high ceiling heights in retail, hospitality, commercial and architectural applications.

**Mounting:** Housing for new construction installations only, Bat-Wing bar hanger brackets adjust vertically 3 1/4" for multiple ceiling types. Heavy-duty steel hanger bars (C260-J) optional. Accepts 1/2" EMT, 26" C-Channel Strut for T-Bar ceilings and 27" adjustable linear bar hangers (optional).

**Driver:** Electronic Direct Current LED driver integrally mounted in electric junction box.

**Dimming:** UniDim (-DUN) option is a universal dimming system that works with most 3-Wire ELV, 2-Wire Incandescent and 5-Wire 0-10V fluorescent dimmers.

**Power Connection:** LED lamp array is replaceable via on board quick disconnect terminal. Meets CA Title 24 Requirements and other standards restricting the use of Medium Base or Bi-Pin Sockets.

**Junction Box:** 16 gauge pre-wired galvanized steel Junction Box, 32 cubic-inch for a maximum of (8) #12 AWG wires. Furnished with (7) 3/4" and (4) Romex knock-outs. Strain clamps to install or remove covers for easy access and ground wire. Equipped with safety standard fitting for flex-conduit.

**Optics:** Interchangeable optics allow polycarbonate lens to be changed in the field to modify beamspread. No tools required.

**Lumen Maintenance:** Minimum 50,000 hours L70 life based on ANSI TM-21 calculations from LM80 standardized test results.

**Thermal Management:** Effective thermal dissipation facilitated by integral cast-aluminum, finned heat sink design for maximum heat rejection to provide long LED life.

### FEATURE:



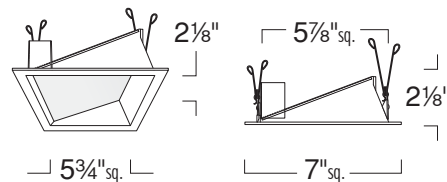
**Application:** Architectural 4" LED Trims feature fully die-cast, seamless construction insuring long lasting beauty and durability. They are designed for medium to high ceiling heights in retail, hospitality, and commercial applications that benefit from linearity and symmetry in modern interior lighting designs.

**Trim Construction:** Trim is built of solid die-cast aluminum for long lasting beauty and durability.

**Lens:** Frosted lens controls glare and eliminates view of lamp. Easy access to lamp mechanism and facilitates trim removal.

**Mounting:** Steel pressure springs mounted on trim to ensure positive retention inside housing.

**Warranty:** Covered by a 5 Year Warranty to be free of defects in materials and craftsmanship. Recommended for applications where ambient temperatures do not exceed 35°C, installations exceeding this temperature will result in reduced LED lamp life and a voided warranty.



### 4" SQUARE LED ADJUSTABLE DOWNLIGHT LHAJLDQ4 120V/277V LED

LUMEN	DIMMING	BEAM SPREAD	LED
LHAJLDQ415C035 :1500lm	UE :120V/277V	Blank :45° Flood	Blank :3000K
LHAJLDQ420C050 :2000lm	UE-DUN :UniDim™ Universal Dimming	-B25 :25° Narrow	-C90 :3000K,90CRI
LHAJLDQ425C070 :2500lm	UE-DUM-EM:UniDim™ Emergency	-B60 :60° Wide Flood	-C97 :3000K,97CRI**
LHAJLDQ435C105 :3500lm	UE-EM :120V/277 Emergency		-T17 :1700K*
LHAJLDQ450C140 :4000lm			-T25 :2500K*
LHAJLDQ453C140 :5000lm			-T27 :2700K
			-T27-C90 :2700K, 90+ CRI
			-T27-C97 :2700K, 90CRI**
			-T35 :3500K
			-T40 :4000K

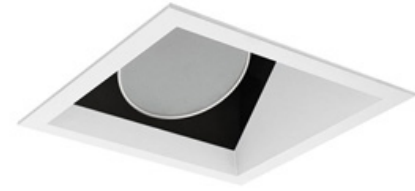
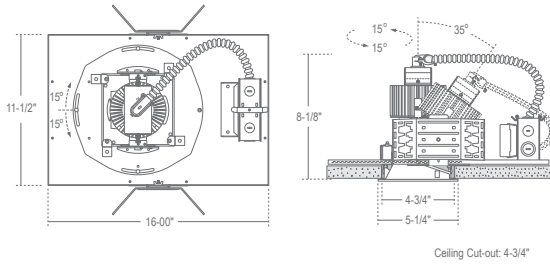
\* Extended lead time for quantities over 100.  
\*\*Only available in 2700K and 3000K

### 4" LED SQUARE LENSED WALL WASH/SLOPED LRAQ471

Ordering example: LHAJLDQ415C035UE/LRAQ471B

FINISH	RATING
/LRAQ471B :All Black	Blank :Damp Location
/LRAQ471S :All Satin	-WL :Wet Location
/LRAQ471W :All White	

## 4" Square LED Adjustable Downlight w/ 4" LED Square Open Wall Wash/Sloped 4" LED ARCHITECTURAL DOWNLIGHT



### SPECIFICATION

**Application:** Architectural 4" Square LED Housings are designed for medium to high ceiling heights in retail, hospitality, commercial and architectural applications.

**Mounting:** Housing for new construction installations only, Bat-Wing bar hanger brackets adjust vertically 3 1/4" for multiple ceiling types. Heavy-duty steel hanger bars (C260-J) optional. Accepts 1/2" EMT, 26" C-Channel Strut for T-Bar ceilings and 27" adjustable linear bar hangers (optional).

**Driver:** Electronic Direct Current LED driver integrally mounted in electric junction box.

**Dimming:** UniDim (-DUN) option is a universal dimming system that works with most 3-Wire ELV, 2-Wire Incandescent and 5-Wire 0-10V fluorescent dimmers.

**Power Connection:** LED lamp array is replaceable via on board quick disconnect terminal. Meets CA Title 24 Requirements and other standards restricting the use of Medium Base or Bi-Pin Sockets.

**Junction Box:** 16 gauge pre-wired galvanized steel Junction Box, 32 cubic-inch for a maximum of (8) #12 AWG wires. Furnished with (7) 3/4" and (4) Romex knock-outs. Strain clamps to install or remove covers for easy access and ground wire. Equipped with safety standard fitting for flex-conduit.

**Optics:** Interchangeable optics allow polycarbonate lens to be changed in the field to modify beams spread. No tools required.

**Lumen Maintenance:** Minimum 50,000 hours L70 life based on ANSI TM-21 calculations from LM80 standardized test results.

**Thermal Management:** Effective thermal dissipation facilitated by integral cast-aluminum, finned heat sink design for maximum heat rejection to provide long LED life.

### FEATURE:



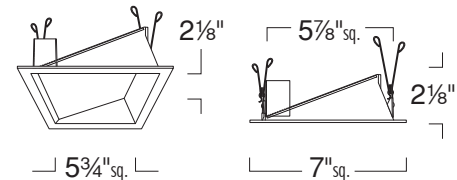
**Application:** Architectural 4" LED Trims feature fully die-cast, seamless construction insuring long lasting beauty and durability. They are designed for medium to high ceiling heights in retail, hospitality, and commercial applications that benefit from linearity and symmetry in modern interior lighting designs.

**Trim Construction:** Trim is built of solid die-cast aluminum for long lasting beauty and durability.

**Lens:** Frosted lens controls glare and eliminates view of lamp. Easy access to lamp mechanism and facilitates trim removal.

**Mounting:** Steel pressure springs mounted on trim to ensure positive retention inside housing.

**Warranty:** Covered by a 5 Year Warranty to be free of defects in materials and craftsmanship. Recommended for applications where ambient temperatures do not exceed 35°C, installations exceeding this temperature will result in reduced LED lamp life and a voided warranty.



### 4" SQUARE LED ADJUSTABLE DOWNLIGHT LHAJLDQ4 120V/277V LED

LUMEN	DIMMING	BEAM SPREAD	LED
LHAJLDQ415C035 :1500lm	UE :120V/277V	Blank :45° Flood	Blank :3000K
LHAJLDQ420C050 :2000lm	UE-DUN :UniDim™ Universal Dimming	-B25 :25° Narrow	-C90 :3000K,90CRI
LHAJLDQ425C070 :2500lm	UE-DUM-EM:UniDim™ Emergency	-B60 :60° Wide Flood	-C97 :3000K,97CRI**
LHAJLDQ435C105 :3500lm	UE-EM :120V/277 Emergency		-T17 :1700K*
LHAJLDQ450C140 :4000lm			-T25 :2500K*
LHAJLDQ453C140 :5000lm			-T27 :2700K
			-T27-C90 :2700K, 90+ CRI
			-T27-C97 :2700K, 90CRI**
			-T35 :3500K
			-T40 :4000K

\* Extended lead time for quantities over 100.  
\*\*Only available in 2700K and 3000K

### 4" LED SQUARE OPEN WALL WASH/SLOPED LRAQ472

Ordering example: LHAJLDQ415C035UE/LRAQ472W

FINISH
/LRAQ472B :All Black
/LRAQ472S :All Satin
/LRAQ472W :All White