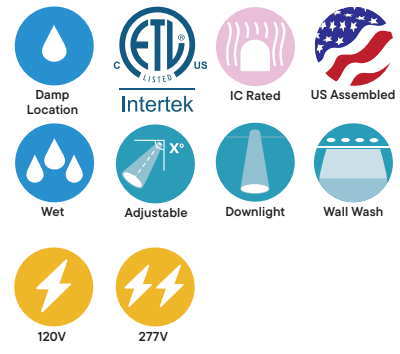
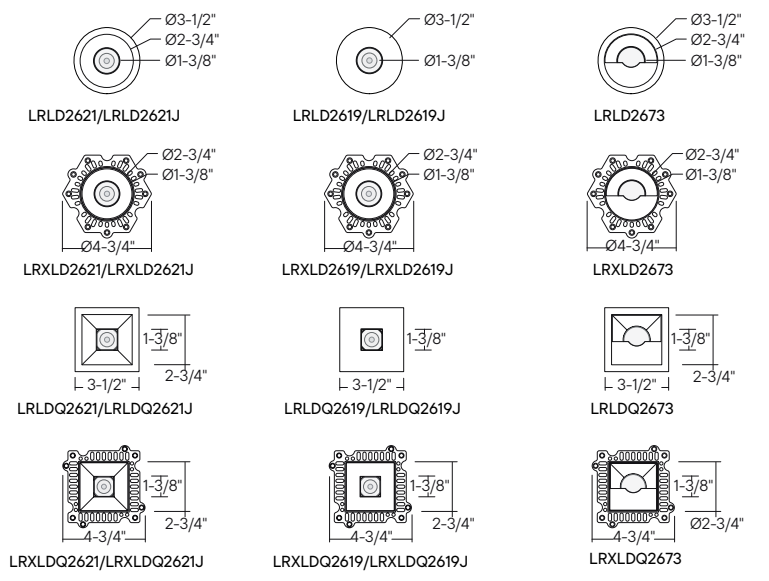
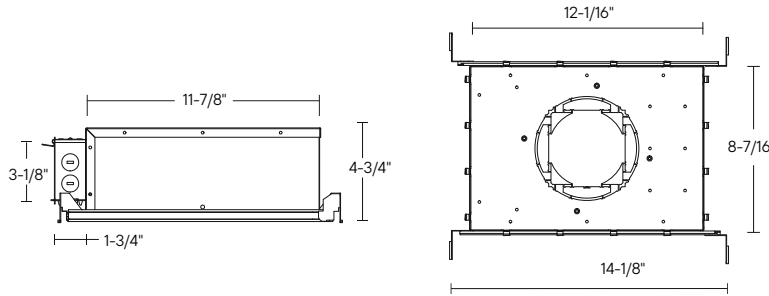


LHLD26IC-FRM : 2.5" GEN2 P-SERIES IC FRAME NEW CONSTRUCTION ROUND/SQUARE

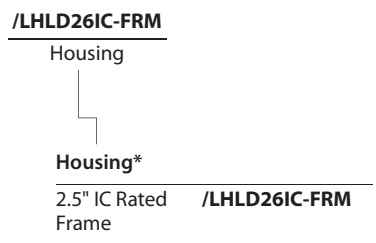


- IC Rated Housing (Loosefill Blown / Rolled Insulation)
- Airtight
- Frame includes (x2) 24" Adjustable Hanger Bars
- Hanger bars equipped with 3/4" serrated barbed studs



2025.11.17

ORDERING : /LHLD26IC-FRM



*Type IC Frame and Fire-Rated Frame only compatible with LD5INTJBX with -CO20-HO (600lm, 8W)

SPECIFICATION

COMPATIBILITY

**LRLD2621/
LRXLD2621**

2.5" Gen 2 P-Series
Round Flanged or Trimless
Downlight
1,000lm - 2,400lm
(15 - 22W)

**LRLD2621J/
LRXLD2621J**

2.5" Gen 2 P-Series
Round Flanged or Trimless
Adjustable Downlight
1,000lm - 2,400lm
(15 - 22W)

**LRLD2619/
LRXLD2619**

2.5" Gen 2 P-Series
Round Flanged or Trimless
Downlight Pinhole
1,000lm - 2,400lm
(15 - 22W)

**LRLD2619J/
LRXLD2619J**

2.5" Gen 2 P-Series
Round Flanged or Trimless
Adjustable Pinhole
1,000lm - 2,400lm
(15 - 22W)

**LRLD2673/
LRXLD2673**

2.5" Gen 2 P-Series
Round Flanged or Trimless
Wall Wash
1,000lm - 2,400lm
(15 - 22W)

**LRLDQ2621/
LRXLDQ2621**

2.5" Gen 2 P-Series
Square Flanged or Trimless
Downlight
1,000lm - 2,400lm
(15 - 22W)

**LRLDQ2621J/
LRXLDQ2621J**

2.5" Gen 2 P-Series
Square Flanged or Trimless
Adjustable Downlight
1,000lm - 2,400lm
(15 - 22W)

**LRLDQ2619/
LRXLDQ2619**

2.5" Gen 2 P-Series
Square Flanged or Trimless
Downlight Pinhole
1,000lm - 2,400lm
(15 - 22W)

**LRLDQ2619J/
LRXLDQ2619J**

2.5" Gen 2 P-Series
Square Flanged or Trimless
Adjustable Pinhole
1,000lm - 2,400lm
(15 - 22W)

**LRLDQ2673/
LRXLDQ2673**

2.5" Gen 2 P-Series
Square Flanged or Trimless
Wall Wash
1,000lm - 2,400lm
(15 - 22W)

Application

For locations where Insulation is used above ceiling, the frame allows for support for the downlight in weak ceilings such as tiles and locations where a rough-in frame is desired for new construction applications.

Housing

.05" baked enamel 1-piece drawn steel housing adjusts up to 1" ceiling thickness. Integral thermal protector to guard against improper lamping and installation. Trim is secured with torsion wing springs.

Mounting

Housing suitable for new construction and remodel installations, supplied with (2) 24" adjustable hanger bars. Hanger bars equipped with nail-less install 3/4" serrated barbed studs and with captive nails, for faster and easier secure mounting in wood joists. Set-screws lock into position and prevent shifting after installation. Earthquake structural cable compatible for drop panel ceiling or any other mounting that requires direct support from structural ceilings.

Insulation Contact

IC rated housing rated for direct contact with low to medium density loosefill blown and rolled insulation. For use with high density loosefill blown insulation, reduce rated lamp wattage accordingly (roughly %15-%20).