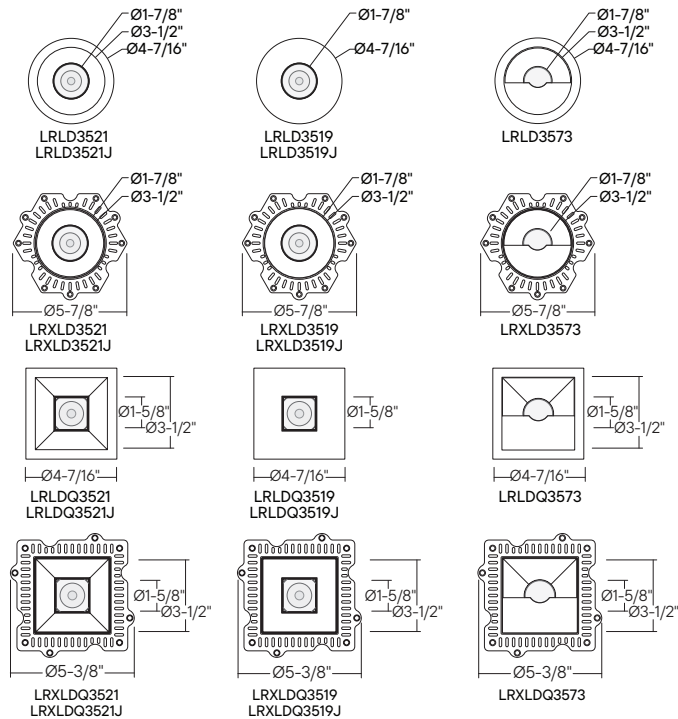
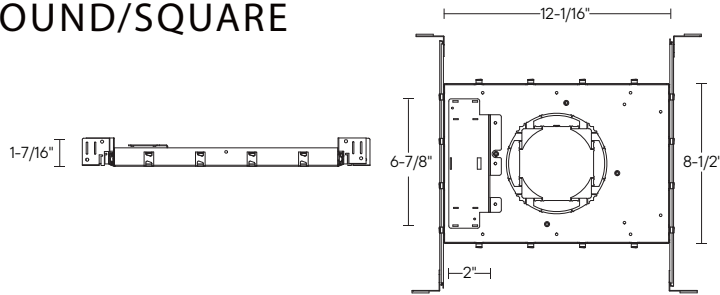
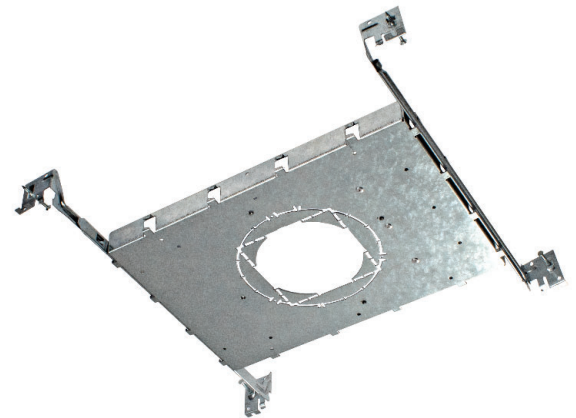


LHLD35-FRM : 3.5" GEN2 P-SERIES NEW CONSTRUCTION FRAME ROUND/SQUARE



- New Construction Frame for new construction applications
- Lightweight-Durable, Galvanized Steel Frames
- Frame includes (x2) 24" Adjustable Hanger Bars
- Hanger bars equipped with 3/4" serrated barbed studs



ORDERING : /LHLD35-FRM

/LHLD35-FRM

Housing

Housing

3.5" New Construction Frame /LHLD35-FRM

2025.12.08

SPECIFICATION

COMPATIBILITY

**LRLD3521/
LRXLD3521**

3.5" Gen 2 P-Series
Round Flanged or Trimless
Downlight
600lm - 3,000lm
(7W - 30W)

**LRLD3521J/
LRXLD3521J**

3.5" Gen 2 P-Series
Round Flanged or Trimless
Adjustable Downlight
600lm - 3,000lm
(7W - 30W)

**LRLD3519/
LRXLD3519**

3.5" Gen 2 P-Series
Round Flanged or Trimless
Downlight Pinhole
600lm - 3,000lm
(7W - 30W)

**LRLD3519J/
LRXLD3519J**

3.5" Gen 2 P-Series
Round Flanged or Trimless
Adjustable Pinhole
600lm - 3,000lm
(7W - 30W)

**LRLD3573/
LRXLD3573**

3.5" Gen 2 P-Series
Round Flanged or Trimless
Wall Wash
600lm - 3,000lm
(7W - 30W)

**LRLDQ3521/
LRXLDQ3521**

3.5" Gen 2 P-Series
Square Flanged or Trimless
Downlight
600lm - 3,000lm
(7W - 30W)

**LRLDQ3521J/
LRXLDQ3521J**

3.5" Gen 2 P-Series
Square Flanged or Trimless
Adjustable Downlight
600lm - 3,000lm
(7W - 30W)

**LRLDQ3519/
LRXLDQ3519**

3.5" Gen 2 P-Series
Square Flanged or Trimless
Downlight Pinhole
600lm - 3,000lm
(7W - 30W)

**LRLDQ3519J/
LRXLDQ3519J**

3.5" Gen 2 P-Series
Square Flanged or Trimless
Adjustable Pinhole
600lm - 3,000lm
(7W - 30W)

**LRLDQ3573/
LRXLDQ3573**

3.5" Gen 2 P-Series
Square Flanged or Trimless
Wall Wash
600lm - 3,000lm
(7W - 30W)

Application

Although not required, the frame allows for support for the downlight in weak ceilings such as tiles and locations where a rough-in frame is desired for new construction applications.

Mounting

Housing suitable for new construction installations. Adjusts up to 3/4" ceiling thickness. Supplied with (2) 24" adjustable hanger bars. Hanger bars equipped with nail-less install 3/4" serrated barbed studs and with captive nails, for faster and easier secure mounting in wood joists. Set-screws lock into position and prevent shifting after installation. Trim is secured via positive retention friction clips.