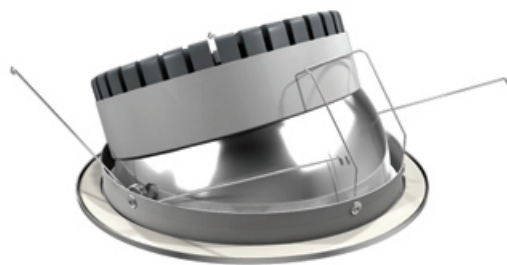
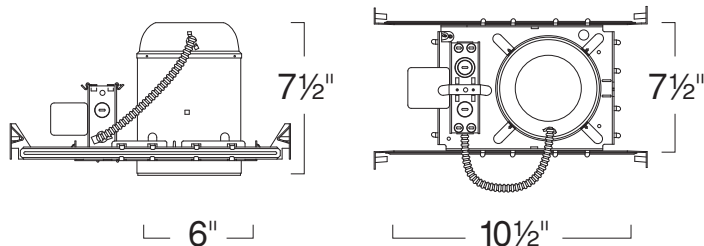


6" LED Housing (10W/15W) w/ 6" LED Wall Wash/Sloped 6" (10W/15W) (6 LED SERIES)



SPECIFICATION

Ceiling cut-out: 6 1/2"

Application: This energy efficient General Purpose recessed LED housing is perfect for low to medium height ceilings in residential and light commercial applications. A variety of trim styles, finishes, beam spreads and wattages are available to achieve a desired look and lumen output.

Mounting: Housing suitable for new construction installations only, supplied with (2) 24" adjustable hanger bars with 90 degrees repositioning ability. Hanger bars equipped with nail-less install 3/4" serrated barbed studs and with captive nails, for faster and easier secure mounting in wood joists. Set-screws lock into position and prevent shifting after installation. Earthquake structural cable compatible for drop panel ceiling or any other mounting that requires direct support from structural ceilings.

Power Connection: LED heat sinked lamp module is replaceable via onboard quick exclusionary disconnect terminal. No tools required. Meets CA Title 24 Requirements and other standards restricting the use of Medium Base or Bi-Pin Sockets.

Driver: Electronic Direct Current U.L. Listed driver mounted away from LED Array for cool operation and end-of-life modularity. Comes standard with 120VAC input and available with optional 120V/277V universal voltage input.

Dimming: Dimming option smoothly dims down as low as 10% of initial light output with flicker-free operation. *Incandescent* dimming option (-DIN) works with standard Incandescent dimmers. Factory qualified for use with LUTRON Brand Dimmers: S600PR, DVSCCL-153P & DV600PR as well as Leviton# IP106-600W. *Low Voltage* dimming option (-DLV) works with standard Electronic Low Voltage Dimmers. Factory qualified for use with LUTRON Brand Dimmers: SELV-300P, DVELV-300P, NELV-450 along with 3-Way versions. (-DLV) Dimming Option also compatible with Grafik Eye and Home Works Dimming Interfaces.

Emergency Option: Emergency LED Battery Back-up available, remotely mounted adjacent to housing by installer. When AC power fails, the device immediately switches to the emergency mode, operating the LEDs for a minimum of 90 minutes. Remote test switch, plate cover and junction box included. Optional Generator Transfer Device switches the driver to auxiliary generator power during the loss of normal AC power, (recommended for applications requiring individual circuit switching).

Junction Box : 16 gauge pre-wired galvanized steel Junction Box, 32 cubic-inch for a maximum of (8) #12 AWG wires. Furnished with (7) 3/4" and (4) Romex knock-outs. Strain clamps to install or remove covers for easy access and ground wire. Equipped with safety standard fitting for flex-conduit.

Insulation Contact: Energy Efficient LED housing comes standard with IC rating for direct contact with loosefill blown and rolled insulation.

Airflow: Airtight option is designed to restrict air flow from room into plenums in compliance to the WSEC - Washington State Energy Code, (Less than 2.0 CFM -Cubic Feet per Minute). Complies to Title24 air flow requirements (Air-tight).

FEATURE:



Application: This energy efficient wall wash LED trim is perfect for low to medium height ceilings in residential and light commercial applications. Wall wash trims provide excellent accent lighting without drawing attention to the light source. A variety of finishes and beam spreads are available to enhance any interior environment.

Mounting: Steel pressure springs mounted on trim to ensure positive retention inside housing.

Power Connection: LED heat sinked lamp module is replaceable via onboard quick exclusionary disconnect terminal. No tools required. Meets CA Title 24 Requirements and other standards restricting the use of Medium Base or Bi-Pin Sockets.

Lumen Maintenance: Minimum 35,000 hours L70 life based on ANSI TM-21 calculations from LM80 standardized test results.

Thermal Management: Effective thermal dissipation facilitated by integral cast-aluminum, finned heat sink design for maximum heat rejection to provide long LED life.

Color Temperature: Comes standard with 3,000K Warm White LED's binned according to ANSI C78 377A for color temperature and chromaticity ranges. Available with other color temperatures with ANSI binning of 2,700K, 3,500K & 4,000K. To order use "-T" Suffix followed by color temperature. Example 4000K= T40. Consult factory as extended lead times and minimum order quantities apply.

Warranty: Covered by a 3 Year Warranty to be free of defects in materials and craftsmanship. Recommended for applications where ambient temperatures do not exceed 35°C, installations exceeding this temperature will result in reduced LED lamp life and a voided warranty.

Label: cETL Listed

Limitation: Not for use w/Shallow Housings.

Assembled in USA

6" LED HOUSING (10W/15W) LHLD6 10W/15W LED

WATTAGE	DRIVER TYPE	OPTIONS
LHLD610C50 :10W	Blank :120V	Blank :None
LHLD615C70 :15W	-DHL :(120V/277V) Hilume Dimming*	-EM :Emergency Back-Up (6W)
	-DLV :ELV Dimming	-EM2 :Emergency Back-Up (10W)
	UE :120V/277V*	
	UE-D10 :(120V/277V) 0-10V Dimming*	

* Not available for 10W option

6" LED WALL WASH/SLOPED LRLD671 10W/15W LED

REFLECTOR FINISH	BEAM SPREAD	COLOR TEMP
LRLD671W :All White	-B25:Narrow Flood	Blank :3000K
LRLD671BB :All Black	-B45:Flood	
LRLD671S :Satin Reflector/ White Ring	-B60:Wide Flood (SOL Lens)	
LRLD671SS :All Satin Haze	-B61:Wide Flood	
LRLD671CNF :Clear Reflector/ Natural Ring		

Ordering example: LHLD610C50-DHL-EM2/LRLD671SS-B61