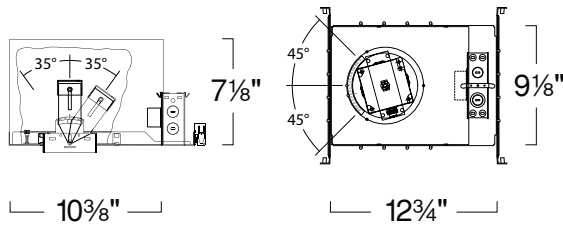


3" Mini-Arc Square 12V MR16 Housing w/ Square Open Wall Wash 3" MINI-ARC SQUARE LOW VOLTAGE LIGHTING



SPECIFICATION

Ceiling cut-out: 3 1/2" Square

Application: Mini-Arc² Phantom 3" Square Downlight Housings are designed for low to medium ceiling heights in retail, hospitality, commercial and high-end residential applications. Advanced 'hot-aiming' mechanism allows precise and lockable positioning of the square trim prior to drywall or ceiling panel installation. Post installation adjustment of the beam tilt is possible from below the fixture. Housing works with standard 3" Square trims and 3" square 'Trimless' trims

Adjustability: Collar bracket provides 90° of rotation, marked in 5° increments for positioning before drywall installation. Lamp holder assembly allows 35° tilt and 1-1/2" vertical lamp source adjustment.

Housing: Collar bracket adjusts for 1/2" to 1" ceiling thickness. Integral thermal protector guards against improper installation. Trim is secured with 4 torsion spring clips.

Mounting: Housing suitable for new construction installations only, supplied with (2) 24" adjustable hanger bars with 90 degrees repositioning ability. Hanger bars equipped with nail-less install 3/4" serrated barbed studs and with captive nails, for faster and easier secure mounting in wood joists. Set-screws lock into position and prevent shifting after installation. Earthquake structural cable compatible for drop panel ceiling or any other mounting that requires direct support from structural ceilings.

Transformer: Class 2 Noise-Free Electronic transformer installed adjacent to Junction Box, bottom and top accessible. Dimmable with dimmers designed for Electronic Low Voltage Loads. Thermally protected rated for 90° C.

Socket: 2-pin porcelain socket with aluminum heat sink plate. Lamp clips to trim to ensure proper and consistent positioning.

Junction Box : 16 gauge pre-wired galvanized steel Junction Box, 32 cubic-inch for a maximum of (8) #12 AWG wires. Furnished with (7) 3/4" and (4) Romex knock-outs. Strain clamps to install or remove covers for easy access and ground wire. Equipped with safety standard fitting for flex-conduit.

Insulation Contact: IC rated housing rated for direct contact with loosefill blown and rolled insulation.

Airflow: Airtight option is designed to restrict air flow from room into plenums in compliance to the WSEC - Washington State Energy Code, (Less than 2.0 CFM -Cubic Feet per Minute). Complies to Title24 air flow requirements (Air-tight).

Label: cETL Listed

Made in USA

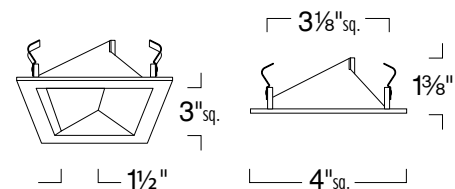
FEATURE:



Application: Mini-Arc² - 3" Square Trims feature fully die-cast, seamless construction insuring long lasting beauty and durability. They are designed for low to medium ceiling heights in retail, hospitality, commercial and high-end residential applications that benefit from linearity and symmetry in modern interior lighting designs.

Trim Construction: Trim is built of solid die-cast aluminum for long lasting beauty and durability.

"Mounting: Steel pressure springs mounted on trim to ensure positive retention inside housing. Cable tether secures trim to housing for easy maintenance. For trimless applications mud flange provided with LRX style reflector can be attached to bottom of ceilings up to 2" thick."



3" MINI-ARC SQUARE 12V MR16 HOUSING LHQ3LV 12V 50W MR16

TRANSFORMER	
LHQ3LV	:120V
LHQ3LV-27	:277V

SQUARE OPEN WALL WASH LRQ372

LRQ372	FINISH	RATING
LRQ372	W :White	Blank :Damp Location
	BB :All Black	-WL :Wet Location

Ordering example: LHQ3LV/LRQ372W