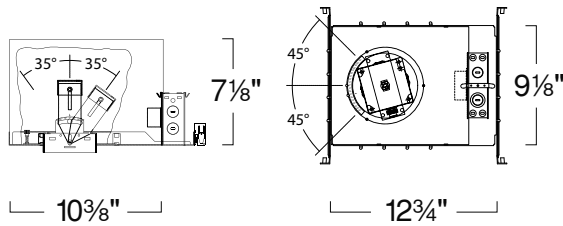


3" Mini-Arc Square 12V MR16 Housing w/ Square Trimless Lensed Reflector

3" MINI-ARC SQUARE LOW VOLTAGE LIGHTING



SPECIFICATION

Ceiling cut-out: 3 1/2" Square

Application: Mini-Arc² Phantom 3" Square Downlight Housings are designed for low to medium ceiling heights in retail, hospitality, commercial and high-end residential applications. Advanced 'hot-aiming' mechanism allows precise and lockable positioning of the square trim prior to drywall or ceiling panel installation. Post installation adjustment of the beam tilt is possible from below the fixture. Housing works with standard 3" Square trims and 3" square 'Trimless' trims

Adjustability: Collar bracket provides 90° of rotation, marked in 5° increments for positioning before drywall installation. Lamp holder assembly allows 35° tilt and 1-1/2" vertical lamp source adjustment.

Housing: Collar bracket adjusts for 1/2" to 1" ceiling thickness. Integral thermal protector guards against improper installation. Trim is secured with 4 torsion spring clips.

Mounting: Housing suitable for new construction installations only, supplied with (2) 24" adjustable hanger bars with 90 degrees repositioning ability. Hanger bars equipped with nail-less install 3/4" serrated barbed studs and with captive nails, for faster and easier secure mounting in wood joists. Set-screws lock into position and prevent shifting after installation. Earthquake structural cable compatible for drop panel ceiling or any other mounting that requires direct support from structural ceilings.

Transformer: Class 2 Noise-Free Electronic transformer installed adjacent to Junction Box, bottom and top accessible. Dimmable with dimmers designed for Electronic Low Voltage Loads. Thermally protected rated for 90° C.

Socket: 2-pin porcelain socket with aluminum heat sink plate. Lamp clips to trim to ensure proper and consistent positioning.

Junction Box : 16 gauge pre-wired galvanized steel Junction Box, 32 cubic-inch for a maximum of (8) #12 AWG wires. Furnished with (7) 3/4" and (4) Romex knock-outs. Strain clamps to install or remove covers for easy access and ground wire. Equipped with safety standard fitting for flex-conduit.

Insulation Contact: IC rated housing rated for direct contact with loosefill blown and rolled insulation.

Airflow: Airtight option is designed to restrict air flow from room into plenums in compliance to the WSEC - Washington State Energy Code, (Less than 2.0 CFM -Cubic Feet per Minute). Complies to Title24 air flow requirements (Air-tight).

Label: cETL Listed

Made in USA

FEATURE:

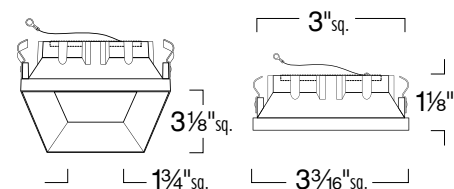


Application: Mini-Arc² Phantom 3" Square Trims feature LITON's exclusive Phantom 'Trimless' design that allows the trims to sit flush to the ceiling with no visible trim ring. They are designed for low to medium ceiling heights in retail, hospitality, commercial and high-end residential applications that benefit from zero sight line linearity and symmetry in modern interior lighting designs. Fully die-cast construction insures long lasting beauty and durability.

Trim Construction: Trim is die-cast and includes a perforated mesh flange for installation in drywall or plaster ceilings. Mudding may be applied right up to the edge of the trim producing a clean, flat 'Trimless' look.

Lens: Frosted lens controls glare and eliminates view of lamp. Built-in hinge allows easy access to lamp mechanism and facilitates trim removal.

Mounting: Steel pressure springs mounted on trim to ensure positive retention inside housing. Cable tether secures trim to housing for easy maintenance. For trimless applications mud flange provided with LRX style reflector can be attached to bottom of ceilings up to 2" thick. "



3" MINI-ARC SQUARE 12V MR16 HOUSING LRHQ3LV

TRANSFORMER	
LHQ3LV	:120V
LHQ3LV-27	:277V

SQUARE TRIMLESS LENSED REFLECTOR LRXQ302

LRXQ302	FINISH	RATING
LRXQ302	W :White	Blank :Damp Location
	B :Black	-WL :Wet Location

Ordering example: LHQ3LV/LRXQ302W