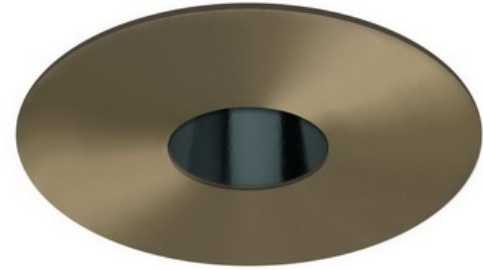
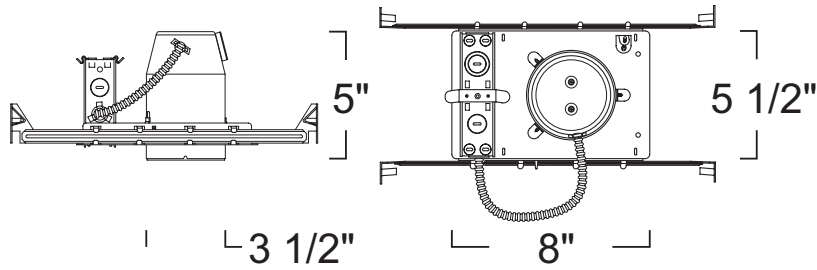


## Remote Housing w/ Pinhole w/ Reflector LH1399 SERIES - 3" LOW VOLTAGE RECESSED LIGHTING



### SPECIFICATION

Ceiling cut-out: 3 7/8"

**Application:** General purpose recessed downlight housing for low to medium height ceilings for residential and light commercial applications. A variety of trims, compatible styles and finishes are available to achieve the desired décor and illumination.

**Housing:** Pre-wired housing adjusts up to a 1 1/4" ceiling thickness. Integral thermal protector to guard against improper lamping and installation. Housing provides an adjustable socket plate which allows for use of different lamp types. Trim is secured with torsion wing springs.

**Mounting:** Housing suitable for new construction installations only, supplied with (2) 24" adjustable hanger bars with 90 degrees repositioning ability. Hanger bars equipped with nail-less install 3/4" serrated barbed studs and with captive nails, for faster and easier secure mounting in wood joists. Set-screws lock into position and prevent shifting after installation. Earthquake structural cable compatible for drop panel ceiling or any other mounting that requires direct support from structural ceilings.

**Remote Transformer:** Pre-wired .05" baked enamel 1-piece drawn steel housing adjusts up to 1-1/4" ceiling thickness. Integral thermal protector to guard against improper lamping and installation. Trim is secured with torsion wing springs.

**Socket:** 2-pin porcelain socket with aluminum heat sink plate. Lamp clips to trim to ensure proper and consistent positioning.

**Junction Box :** 16 gauge pre-wired galvanized steel Junction Box, 32 cubic-inch for a maximum of (8) #12 AWG wires. Furnished with (7) 3/4" and (4) Romex knock-outs. Strain clamps to install or remove covers for easy access and ground wire. Equipped with safety standard fitting for flex-conduit.

**Insulation Contact:** Non-IC rated housing must be kept 3" from insulation.

**Airflow:** Airtight option is designed to restrict air flow from room into plenums in compliance to the WSEC - Washington State Energy Code, (Less than 2.0 CFM -Cubic Feet per Minute). Complies to Title24 air flow requirements (Air-tight).

**Safety Labels:** UL/CUL listed for through-branch wiring (8) No.12 AWG 90°C and suitable for damp locations. NYC approved: Calendar #41937.

Label: cETL Listed

### FEATURE:



**Application:** Provides the type of precision illumination needed for artwork such as paintings and statues. All of the wall wash trims will provide the desired accent illumination without interfering with the environment's general lighting.

**Gasket:** Supplied with gasket to prevent light leakage and unsightly heat streaks on ceiling surface.

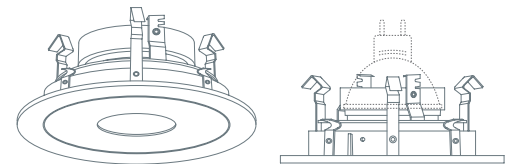
**Lens Inclusion:** Clear glass protective safety lens included in packaging.

**Mounting:** Steel pressure springs mounted on trim to ensure positive retention inside housing.

**Accessories:** Takes up to (2) 2" Media.

**Label:** UL Listed, cETL Listed

**Limitation:** Not for use w/Shallow Housings.



1 7/16"

4 3/8"

### REMOTE HOUSING

**LHR1399** 12V In 50W Max MR16

RATING	WATTAGE
LHR1399 :Standard	Blank :50W
LHR1399A :Airtight	

### PINHOLE W/ REFLECTOR

**LR1319** 12V/120V 50W MR16

FINISH
LR1319BB :All Black
LR1319BMO :Black w/ Mocha Ring
LR1319CN :Clear w/ Natural Ring
LR1319CO :All Copper
LR1319CW :Clear w/ White Ring
LR1319MO :All Mocha
LR1319N :All Natural
LR1319WW :All White

Ordering example: LHR1399/LR1319BMO

2016.8.29

File Located online [www.liton.com/spec](http://www.liton.com/spec)

ID #: 1989\_260