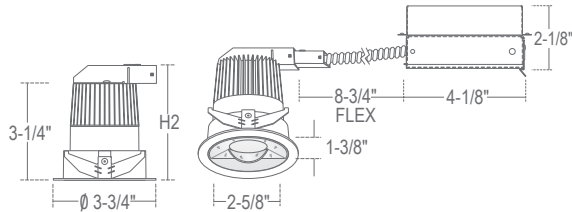
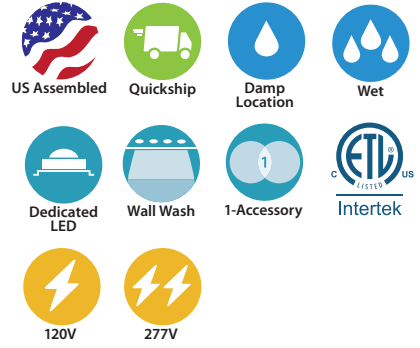


## LRLD2573: 2.5" P-SERIES

RECESSED LED - ZERODARK WALL WASH ROUND FLANGED, 750LM/1200LM



**-L09:** H2: 3-7/8" **-L14:** H2: 5-1/8"  
 Ceiling Cut-Out: 3-1/16" Max  
 Ceiling Thickness (Frameless): 3" Max  
 Ceiling Thickness (with Frame): 1" Max



- Equivalent to 75W MR16 Output
- Ideal where space is limited and energy savings is important
- 750lm (15W) and 1200lm (22W)
- 90 CRI Standard
- 0.5% dimming for 750lm (-L09), 5% dimming for 1200lm (-L14).

### ORDERING : LRLD2573SW-L09-T27UE-DUN-WL

#### LRLD2573

Fixture	Reflector Finish	Flange Ring Finish	Lumens	Color Temperature	Driver	Rating
<b>Fixture</b>			<b>Lumens (Nominal Delivered)</b>		<b>Driver</b>	<b>Rating</b>
ZeroDark	<b>LRLD2573</b>		750lm (15W)	<b>-L09<sup>2</sup></b>	120V, Triac Dimming	<b>Blank</b>
Wall Wash			1200lm (22W)	<b>-L14<sup>5</sup></b>	0-10V Dimming	<b>UE-D10</b>
Round Flanged					120V/277V, UniDim™	<b>UE-DUN</b>
					0-10V, ELV, Triac Dimming (5%)	
			<b>Color Temperature</b>		0-10V Dimming (1%)	<b>UE-D10P1</b>
<b>Reflector Finish<sup>7</sup></b>			3000K (90 CRI)	<b>Blank</b>	Lutron EcoSystem Dimming (1%)	<b>-DEC<sup>8</sup></b>
Matte White	<b>W</b>		3000K (97 CRI)	<b>-C97</b>	DALI Dimming	<b>-DLI<sup>8</sup></b>
Black	<b>B</b>		2700K (90 CRI)	<b>-T27</b>		
Satin Haze	<b>S</b>		2700K (97 CRI)	<b>-T27-C97</b>		
			3500K (90 CRI)	<b>-T35</b>		
			4000K (90 CRI)	<b>-T40</b>		
<b>Flange Ring Finish</b>			3000K - 1800K	<b>-TWD<sup>2,5</sup></b>		
White	<b>W</b>		Warm Dimming			
Black	<b>B</b>					

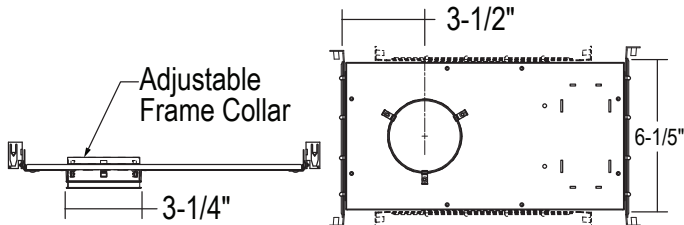
2023.12.14

<sup>2</sup> (-TWD) Warm Dimming only available for 1000lm (-L09) lumen package.  
<sup>5</sup> (-TWD) Warm Dimming, and (-L14) 1400lm is not available for both LHLD25IC- FRM (IC) or LHFRLD25 (Fire-Rated).  
<sup>7</sup> Reflector interior finish is standard black with reflector face finish in Matte White (W), Specular Black (B), and Satin Haze (S).  
<sup>8</sup> Special order, minimum order. Extended lead time may apply. Consult Factory.  
 Consult factory for emergency battery options.  
**NOTE:** For commercial applications with 1/2" Pipe or Flex-Conduit (**LITON# PCT031**) Fitting Adaptor should be used. Consult Factory.

OPTIONAL FRAMES & ACCESSORIES

**LHLD25-FRM**

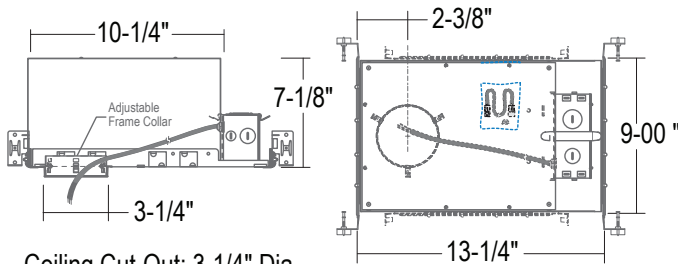
New Construction Frame (Round)



Ceiling Cut-Out: 3-1/4" Dia  
 Ceiling Thickness (with Frame): 1" Max

**LHLD25IC-FRM**

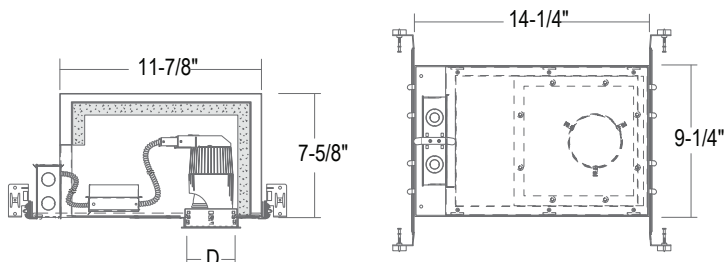
New Construction IC (Insulation Contact) Frame (Round)



Ceiling Cut-Out: 3-1/4" Dia  
 Ceiling Thickness (with Frame): 1" Max

**LHFRLD25**

2.5" Fire-Rated Frame (Round)



D: Ceiling Cut-out 3-1/4"

## SPECIFICATION

### Application

---

**LRLD2573** - ZeroDark Wall Wash, Round Flanged is a glare-free solution that offers high lumen output, ambience, and visual interest to vertical surfaces in high end residential and commercial applications.

### Housing

---

Suitable for remodel or new construction installations. Designed to secure to existing sheet rock or panel ceilings up to 3" thick. For added support in weak ceilings, LHLD25 Frames can be used.

### Thermal Management:

Effective thermal dissipation facilitated by integral cast-aluminum, heat sink design for maximum heat rejection to provide long LED life.

### Lens

---

Airtight lens available for wet locations. Specify "WL" when ordering.

### Junction Box

---

(L09 - 120V Triac Option) - 24 gauge pre-wired galvanized steel Junction Box. 7 cubic-inch for a maximum of (4) #12 AWG wires. (2) 1/4" Romex knock-outs. Remove covers for easy access and ground wire. For 1/2" Pipe or Flex-Conduit (LITON# PCT031) Fitting Adaptor should be used. Consult Factory.

Alternate Junction Box: 18 gauge pre-wired aluminum Junction Box. 7 cubic-inch for a maximum of (4) #12 AWG wires. (2) 1/2" knock-outs. Remove covers for easy access and ground wire.

### Trim Ring

---

Friction clips hold Round trim and LED Light Engine secure to sheet rock ceiling or Housing Frame.

### Reflector

---

Reflector interior finish is standard black with linear spread lens insert. Reflector face finish is Matte White (W), Specular Black (B), and Satin Haze (S).

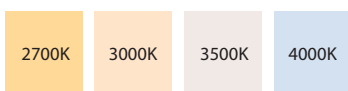
### Optics

---

#### LED Light Engine:

COB (Chip on Board) LED is replaceable via quick disconnect terminal. Meets CA Title 24 Requirements and other standards restricting the use of Medium Base or Bi-Pin Sockets.

#### Color Temperature:



Comes standard with 3000K (90 CRI) Warm White LEDs binned to 3-step MacAdam ellipses within the ANSI C78 377A standard for color temperature and chromaticity ranges light binning allowance. Also available in 2700K, 3500K, 4000K, (90 CRI), and 2700K, 3000K, (97 CRI). Also available with 3000K-1800K Warm Dimming.

#### Lumen Maintenance:

Minimum 50,000 hours L70 life based on ANSI TM-21 calculations from LM80 standardized test results.

## SPECIFICATION (Continued)

### Certifications and Listings

---

ETL/cETL listed to UL1598 and UL8750. Suitable for damp and wet locations. NYC approved: Calendar #41937. CCEA (City of Chicago Environmental Air) Certified: Conforms to CCEA-200 with Section 18-27-300.22 and special requirements Section 14-20-210C-4.

### Caution

---

Fixtures must be grounded in accordance with national, state and/or local electrical codes. Failure to do so may result in serious personal injury.

### Warranty

---

Covered by a 5-Year Warranty to be free of defects in materials and craftsmanship. Recommended for applications where ambient temperatures do not exceed 35°C. Installations exceeding this temperature will result in reduced LED lamp life and a voided warranty.

### Optional Frames & Accessories

---

**LHLD25-FRM** - New Construction Frame (Round). Suitable for new construction and remodel installations. Adjusts up to 1" ceiling thickness. Supplied with (2) 24" adjustable hanger bars with nail-less install 3/4" serrated barbed studs for mounting in wood joists.

**LHLD25IC-FRM** - New Construction IC Frame (Round). Rated for direct contact with low to medium density loosefill blown and rolled insulation. Adjusts up to 1" ceiling thickness. Supplied with (2) 24" adjustable hanger bars with nail-less install 3/4" serrated barbed studs for mounting in wood joists.

**LHFRLD25** - 2.5" Fire-Rated Frame (Round). Patented 3-stage fire-resistant technology is IC Rated and airtight with a one-hour fire rating. New construction frame eliminates manually constructed drywall enclosures saving labor, materials and time.

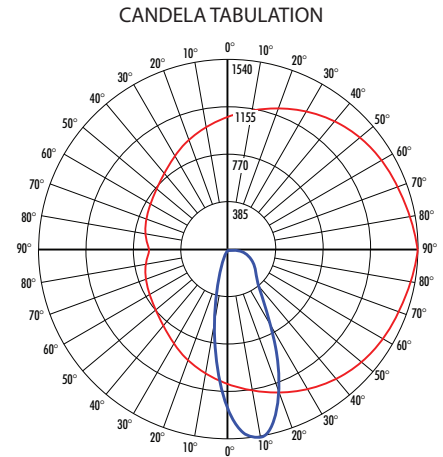
## PHOTOMETRY - WALL WASH

### LRLD2573B-L14UE-DUN

Input Voltage:	120V
System Power:	20.85W
Test Date:	04/2021
Color Temperature:	3053K
CRI:	93.2
Lumens Delivered:	1057
CBCP:	1539.35
Power Factor:	0.99

MULTIPLIERS LUMEN OUTPUT	
750lm (L09):	0.68
<b>1200lm (L14):</b>	<b>1.00</b>
CRI	
<b>90 CRI:</b>	<b>1.00</b>
97 CRI:	0.90
TRIM COLOR	
<b>White:</b>	<b>1.00</b>
<b>Black:</b>	<b>1.00</b>
<b>Satin Haze:</b>	<b>1.00</b>

MULTIPLIERS CCT	
4000K :	1.02
3500K :	1.01
<b>3000K:</b>	<b>1.00</b>
2700K:	0.96
1700K:	0.81
(-TWD) 3000K-1800K:	0.78



## PERFORMANCE DATA

### LUMINAIRE SPACED 4' FROM WALL

#### Footcandles On Wall

