



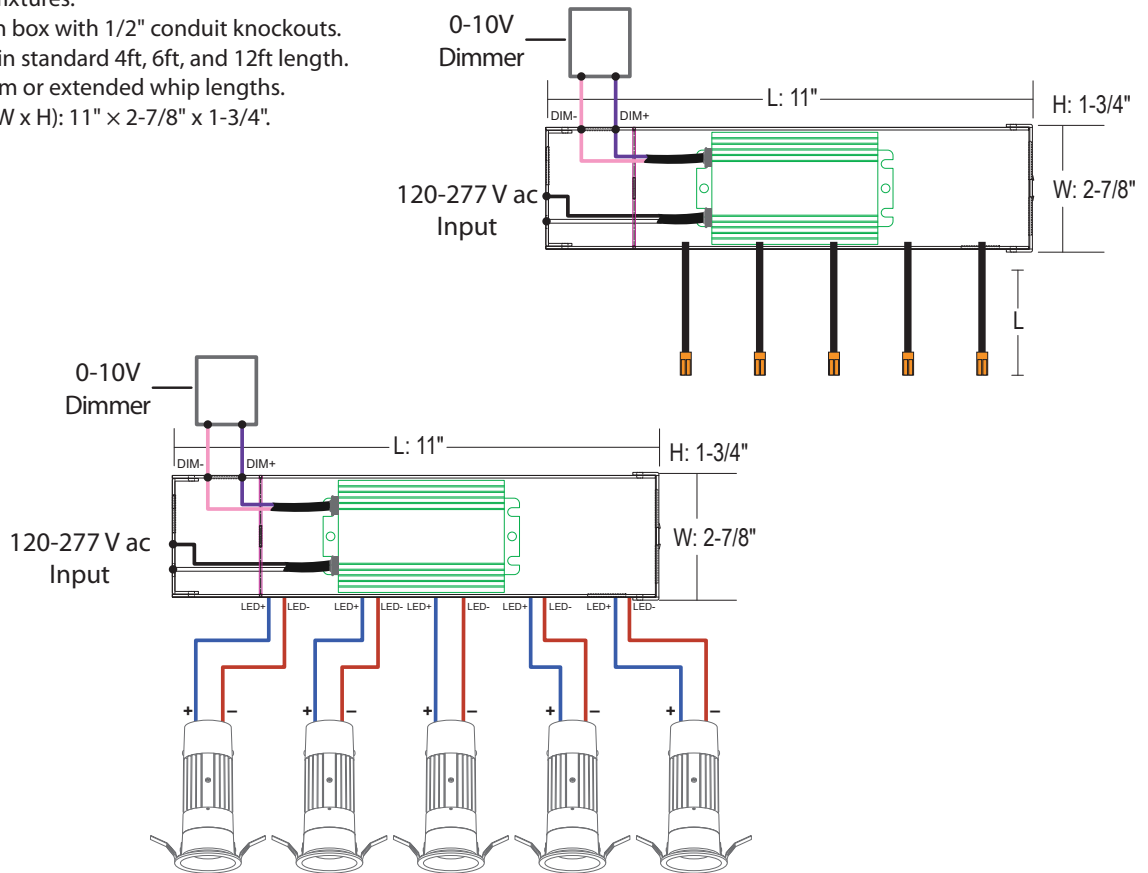
## DRIVER SETUP

### POWER SUPPLY: LD5RMTJBX

Driver Setup	Lumens	Control	Pre-Wired	Lengths	Emergency Options
<b>Driver Setup</b>		<b>Lumens<sup>3</sup></b>	<b>Control</b>		<b>Pre-Wired (Quick Connects)</b>
Remote Power Supply (1 Driver for Multiple Fixtures)	<b>LD5RMTJBX</b>	600lm (8W) <b>-C020</b> 1000lm (12W) <b>-C030</b>	TRIAC/ELV (120V) 0-10V (120V/277V) Unisense - Remotely Mounted Motion/Photosensor (120V) Unisense - Remotely Mounted Motion/Photosensor (120V/277V) Casambi Wireless Dimming (120V/277V) Bubblynet Wireless Dimming (120V/277V) Athena Wireless Node (120V)	<b>Blank<sup>10</sup></b> <b>UE-D10</b> <b>-SUN-RMT<sup>1,6</sup></b>  <b>-SUN-RMT-1227<sup>1,6</sup></b>  <b>-DCSM<sup>1</sup></b>  <b>-DBNT<sup>1</sup></b>  <b>-AWN<sup>1,6</sup></b>	2 pre-wired connectors <b>-2QC</b> 3 pre-wired connectors <b>-3QC</b> 4 pre-wired connectors <b>-4QC<sup>10</sup></b> 5 pre-wired connectors <b>-5QC<sup>10</sup></b>
					<b>Lengths (each QC)<sup>9</sup></b>
					None <b>Blank</b> 4' Total length <b>-L04</b> 6' Total length <b>-L06</b> 12' Total length <b>-L12</b>
					<b>Emergency Options</b>
					Remote Emergency Backup (40W) <b>-EMAC40<sup>8</sup></b>

### Remote Power Supply LD5RMTJBX:

- 1 Remote supply for 2-6 fixtures.
- 16 Ga aluminum junction box with 1/2" conduit knockouts.
- Pre-wired whips offered in standard 4ft, 6ft, and 12ft length.
- Consult factory for custom or extended whip lengths.
- Overall Dimensions (L x W x H): 11" x 2-7/8" x 1-3/4".



<sup>1</sup> Special order. Minimum order. Extended lead time may apply. Consult Factory.  
<sup>2</sup> Maximum ceiling thickness is 3/4" (to allow adjustability feature).  
<sup>3</sup> (-L06) must be ordered with Power Supply Lumen Option (-C020) and (-L10) must be ordered with Power Supply Lumen Option (-C030).  
<sup>4</sup> (-TWD) and (-T24) not available with (-B15) and only available with the Power Supply Lumen option of (-C030: 1000lm (12W)).  
<sup>5</sup> Beam Spread Options not available with Wallwash trims LRLDQ1573/LRXLDQ1573.  
<sup>6</sup> (-SUN-RMT) & (-AWN) sensors sent with mounting clips for existing ceiling applications. Consult Factory for Layout Assistance.  
<sup>7</sup> For power supply, LD5INTJBX, (-DCSM) only available for (-C030) option.  
<sup>8</sup> (-EMAC40) can be wired for loads (>40W) with 0-10V dimmable driver; see page 9.  
<sup>9</sup> Consult Factory for custom pre-wired connector lengths.  
<sup>10</sup> For LD5RMTJBX power supply: (-4QC, -5QC) only compatible with Blank: TRIAC/ELV Dimming.

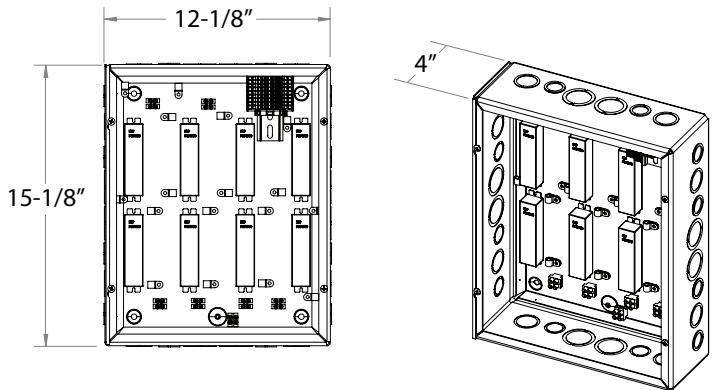
## DRIVER SETUP (Continued)

### POWER SUPPLY: LD5PNLJBX

Driver Setup	# of Drivers	Lumens	Control	Emergency Options
<b>Driver Setup</b>	<b># of Drivers</b>	<b>Lumens<sup>3</sup></b>	<b>Control</b>	<b>Emergency Options</b>
Remote Panel Box Up to 8 Drivers (1 Driver per Fixture)	<b>LD5PNLJBX</b>			
	1 Driver	-D01 600lm (8W)	-C020 TRIAC/ELV (120V)	Blank Remote Emergency Backup (40W) (Up to 4 fixtures)
	2 Drivers	-D02 1000lm (12W)	-C030 0-10V (120V/277V)	UE-D10
	3 Drivers	-D03	1%, 0-10V (120V/277V)	UE-D10P1
	4 Drivers	-D04	UniDim™ 0-10V, TRIAC/ELV (120V/277V)	UE-DUN
	5 Drivers	-D05	Casambi Wireless Dimming (120V/277V)	-DCSM <sup>1</sup>
	6 Drivers	-D06	BubblyNet Wireless System (120V/277V)	-DBNT <sup>1</sup>
	7 Drivers	-D07		
	8 Drivers	-D08		

### Remote Panel Box LD5PNLJBX:

- 1 remote panel box power supply for 1-8 fixtures.
- 16Ga Steel NEMA 1 enclosure with ANSI 61 gray powder coat finish.
- NEMA 1 enclosure can house up to (8) LED drivers.
- Box equipped with screw door and knockouts on all 4 sides for 1/2", 3/4" and 1" conduit feeds.
- Box is cULus listed with UNSPSC39121301.
- Drivers pre-wired with low-voltage LED output to DIN terminals for easy poke-in connections (12–28 AWG) and standard 0–10 V dimming.
- Multiple Boxes can be ordered for larger setups.
- Overall Dimensions (L x W x H): 15-1/8" x 12-1/8" x 4".



<sup>1</sup> Special order. Minimum order. Extended lead time may apply. Consult Factory.

<sup>2</sup> Maximum ceiling thickness is 3/4" (to allow adjustability feature).

<sup>3</sup> (-L06) must be ordered with Power Supply Lumen Option (-C020) and (-L10) must be ordered with Power Supply Lumen Option (-C030).

<sup>4</sup> (-TWD) and (-T24) not available with (-B15) and only available with the Power Supply Lumen option of (-C030: 1000lm (12W)).

<sup>5</sup> Beam Spread Options not available with Wallwash trims LRLDQ1573/LRXLQ1573.

<sup>6</sup> (-SUN-RMT) & (-AWN) sensors sent with mounting clips for existing ceiling applications. Consult Factory for Layout Assistance.

<sup>7</sup> For power supply, LD5INTJBX, (-DCSM) only available for (-C030) option.

<sup>8</sup> (-EMAC40) can be wired for loads (>40W) with 0-10V dimmable driver; see page 9.

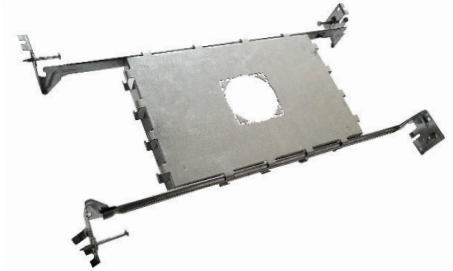
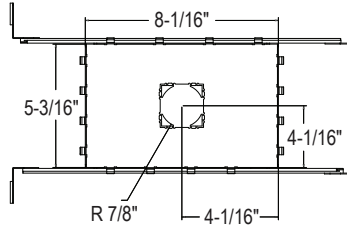
<sup>9</sup> Consult Factory for custom pre-wired connector lengths.

<sup>10</sup> For LD5RMTJBX power supply: (-5QC, -4QC) only compatible with Blank: TRIAC /ELV Dimming.

## NEW CONSTRUCTION FRAMES

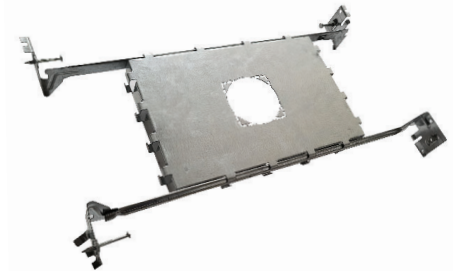
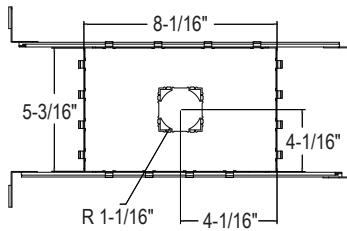
### /LHLD15-FRM: Non-IC (Flanged)

<i>Fits the following</i>	
LRLD1521	LRLDQ1521
LRLD1521J	LRLDQ1521J
LRLD1573	LRLDQ1573



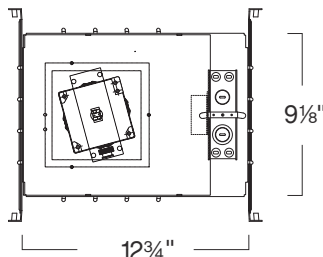
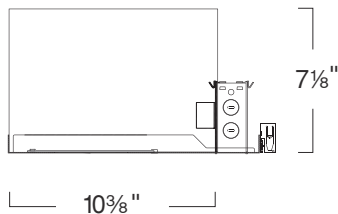
### /LHXL15-FRM: Non-IC (Trimless)

<i>Fits the following</i>	
LRXL1521	LRXLQ1521
LRXL1521J	LRXLQ1521J
LRXL1573	LRXLQ1573



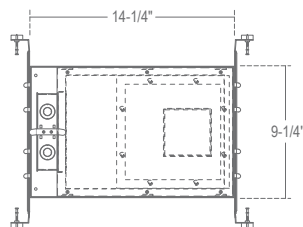
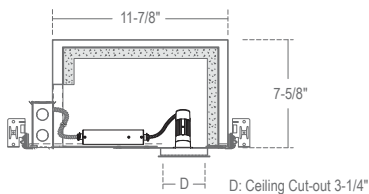
### /LHQ15-IC-FRM & /LHQ15-IC-FRM: Type IC (Flanged/Trimless)

<i>Fits the following</i>	
LRLDQ1521	LRXLQ1521
LRLDQ1521J	LRXLQ1521J
LRLDQ1573	LRXLQ1573



### /LHFR15: Fire-Rated Frame Type IC/1-Hour

<i>Fits the following</i>	
LRLDQ1521	LRXLQ1521
LRLDQ1521J	LRXLQ1521J
LRLDQ1573	LRXLQ1573



## SPECIFICATION

### Application

The 1.5" Micro Recessed LED Downlight's compact profile makes it perfect for low-ceiling and shallow-plenum environments in residential, hospitality, retail, and commercial spaces. Designed for precision lighting, it offers excellent beam control and low glare, making it well-suited for accent, task, or general lighting where visual comfort and architectural integration are paramount. Available in fixed, wallwash, and adjustable versions with up to 25° tilt for precise illumination and design flexibility.

### Housing

Housing supports multiple installation methods. Designed for remodel applications with sheetrock or panel ceiling systems. Optional new construction frame-in kits available. See options (LHLD15-FRM), (LHXL15-FRM), (LHLD15IC-FRM), (LHFRLD15).

### Mounting

FLANGED TRIM OPTIONS		TRIMLESS OPTIONS	
LRLDQ1521	Specified for integration with sheetrock, acoustic tile, and other panelized ceiling systems, providing a secure and flush-mounted interface via lateral spring clips.	LRXLDQ1521	Specified for integration with sheetrock ceilings with a mud-in finish.
LRLDQ1521J		LRXLDQ1521J	
LRLDQ1573		LRXLDQ1573	
Min Ceiling Thickness = 1/2".		Max Ceiling Thickness = 3".	
Max Ceiling Thickness = 3".			

### Thermal Management:

Integrated cast-aluminum heat sink ensures efficient thermal dissipation, maximizing heat rejection to enhance LED performance and extend lifespan.

### Junction Box

LD5INTJBX: Cylindrical Aluminum Junction Box with 1/2" conduit fitting.  
 LD5RMTJBX: 16Ga Aluminum Junction Box with x4 1/2" conduit knockouts.  
 LD5PNLJBX: 16Ga Steel NEMA enclosure; 4 sides with 1/2", 3/4" and 1" conduit knockouts and a screw door.

### Trim Ring

#### Flanged:

Spring clips securely fasten the round trim and LED light engine to the sheetrock ceiling or housing frame.

#### Flangeless:

Drywall screws fasten the reflector and die-cast aluminum trim to the sheetrock ceiling or housing frame by securing them to the trim ring.

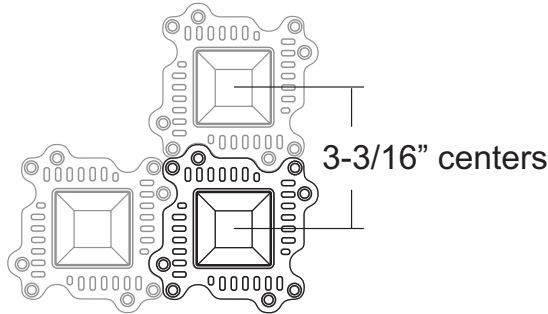
### Finishes:

Standard options are White (W) and Black (B). Matte Gold (MG) available as special order. Consult Factory for Custom Color RAL finishes. (Charges may Apply).

**SPECIFICATION (Continued)**

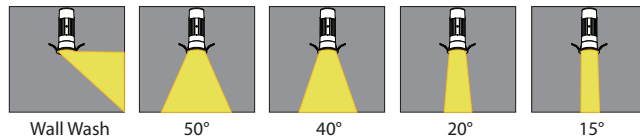
**Minimum Mounting Centers**

Mud in mounting flanges interlock with each other for perfect alignment when tight spacing is required.



**Reflector Optics**

Field-changeable multifaceted TIR reflector securely locks onto the LED light engine for precise optical alignment.

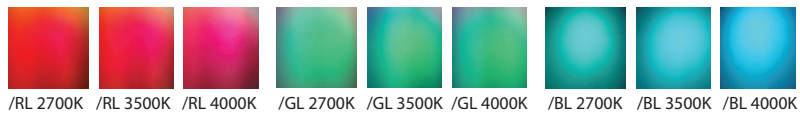


**Lens:**

1. Black Hexcell Louver option available for glare control.
2. Soft Focus Lens option available for beam smoothing.
3. Microprismatic Lens options available for uniforming light distribution.

**Filter Lenses:**

Dichroic Glass, Red Lens (-RL-15), Green Lens (-GL-15), and Blue Lens (-BL-15) shown below in 2700K, 3500K and 4000K color temperatures.



**LED**

**Light Engine:**

COB (Chip on Board) LED is field replaceable via quick disconnect terminals. Meets CA Title 24 Requirements and other standards restricting the use of Medium Base and Bi-Pin sockets.

**Lumen Maintenance:**

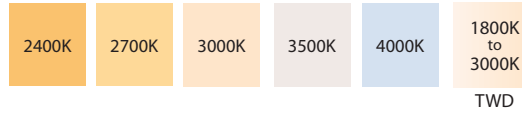
Minimum 50,000 hours L70 life based on ANSI TM-21 calculation from LM80 standardized test results.

## SPECIFICATION (Continued)

### Color Temperature:

COLOR TEMP:	2400K	2700K	3000K	3500K	4000K	1800K-3000K
CRI:	90	90	90	90	90	90

Consult factory for availability of other color temperatures.



### Binning:

3 SDCM binning is standard, with 2 SDCM available upon request. Consult Factory.

### Control Options

Triac dimming to 5%, 120V Only

0-10V to 5%, 120V/277V (UE-D10)

0-10V to 1%, 120V/277V (UE-D10P1)

0-10V to 5%, 120V/277V, ELV, and Triac (UE-DUN)

#### ELV and TRIAC Driver 120V (-DIN):

Compatible with electronic low voltage, and 2-Wire incandescent dimmers. Also known as leading edge, Reverse Phase, Forward Phase dimming. Allows smooth dimming down to 5% depending upon the dimmer's limitations.

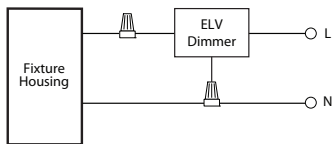
#### 0-10V Driver 120V/277V (UE-D10):

Compatible with most existing 0-10V systems. Also known as fluorescent or 5-Wire dimming. Allows smooth dimming down to 5% depending upon the dimmer's limitations. Compatible with daylight harvesting controls.

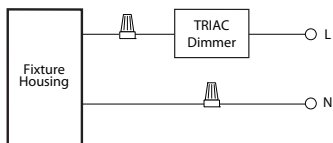
#### UniDim™ Driver 120V/277V (UE-DUN):

All in one ELV and TRIAC phase dimming (120V only), and 0-10V dimming (120V/277V). Works with most 3-Wire ELV, 2-Wire incandescent and 120V/277V 5-Wire 0-10V fluorescent dimmers.

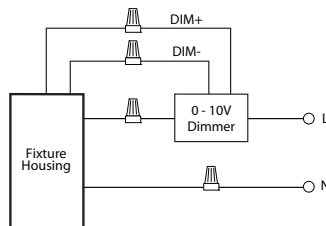
Incandescent/Phase Wiring  
ELV



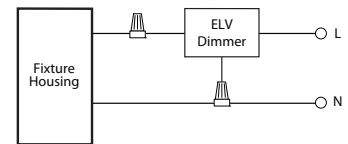
TRIAC



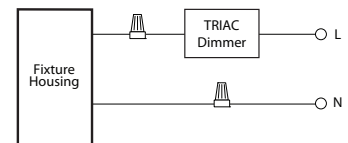
0 - 10V Wiring



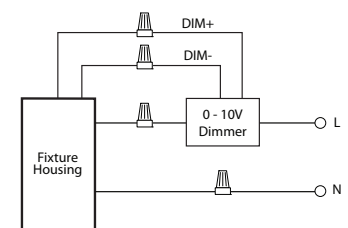
Incandescent/Phase Wiring  
ELV



TRIAC



0 - 10V Wiring



## SPECIFICATION (Continued)

### FULL POWER EMERGENCY INVERTER (-EMAC40)

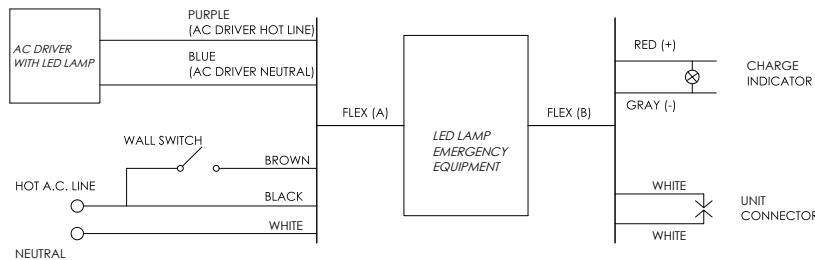
- Must be installed in Dry Locations
- Wattage package will determine battery sent; corresponding wiring diagrams below
- 170 VDC output to AC DRIVER during EM mode

**Not rated for outdoor mounting. Damp location rated.**

#### -EMAC Lumen Data (Battery)

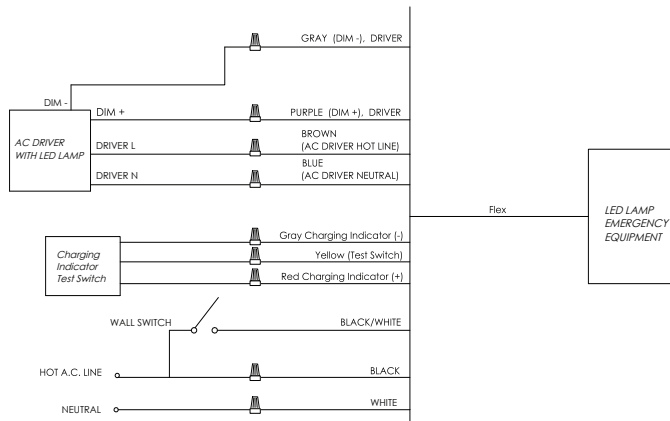
Fixture/Trim	LRLDQ1521 with C020	Fixture/Trim	LRLDQ1521 with C030
Fixture Wattage:	8W	Fixture Wattage:	12W
Fixture Lumens:	600	Fixture Lumens:	1000
EM Lumens:	600	EM Lumens:	1000

#### <25W LOAD



Input Voltage:	120-277VAC/60Hz
Output Voltage:	170VDC (120VAC Equivalent)
Wattage:	25W
Switching Time:	<1s
Charging Time:	24h
Operating Time:	90 minutes
Minimum Temperature:	0°C
Maximum Temperature:	50°C
Self-Diagnostic:	No

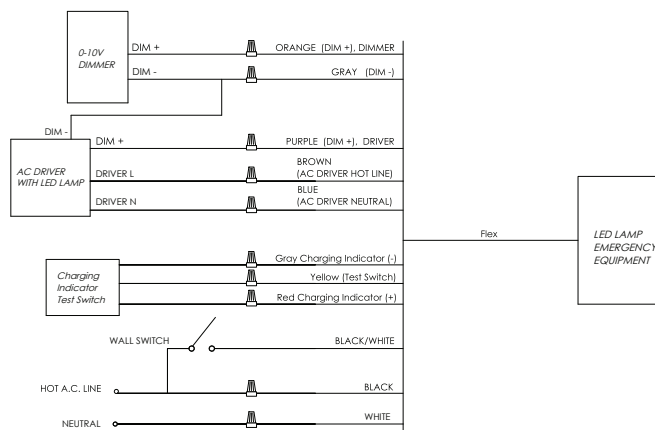
#### <40W LOAD



Input Voltage:	120-277VAC or 347VAC/60Hz
Output Voltage:	170VDC (120VAC Equivalent)
Wattage:	30W
Switching Time:	<1s
Charging Time:	24h
Operating Time:	90 minutes
Minimum Temperature:	0°C
Maximum Temperature:	50°C
Self-Diagnostic:	Yes

#### >40W LOAD

- 0-10V dimmable driver required



Input Voltage:	120-277VAC or 347VAC/60Hz
Output Voltage:	170VDC (120VAC Equivalent)
Wattage:	44W
Switching Time:	<1s
Charging Time:	24h
Operating Time:	90 minutes
Minimum Temperature:	0°C
Maximum Temperature:	50°C
Self-Diagnostic:	Yes

## SPECIFICATION (Continued)

### Electrical Data

---

UL Class P rated, Programmable Constant Current Drivers  
 Input Voltage – 120V & 277V, 50-60 HZ  
 Input Current – 0.5A @ 120V, 0.23A @ 277V  
 Power Factor – > 0.9  
 Inrush Current – Meets NEMA-410 Requirements  
 Efficiency – 90%

### Certifications and Listings

---

PETL/cETL listing to UL1598 and UL8750 standards  
 Title 24/JA8 Compliant.

### Title 24/JA8 Compliant

---

LRLDQ1521_-B_-T27	LRLDQ1521J_-B_-T27	LRLDQ1573_-B_-T27
LRLDQ1521_-B_-T30	LRLDQ1521J_-B_-T30	LRLDQ1573_-B_-T30
LRLDQ1521_-B_-T35	LRLDQ1521J_-B_-T35	LRLDQ1573_-B_-T35
LRLDQ1521_-B_-T40	LRLDQ1521J_-B_-T40	LRLDQ1573_-B_-T40
LRXLDQ1521_-B_-T27	LRXLDQ1521J_-B_-T27	LRXLDQ1573_-B_-T27
LRXLDQ1521_-B_-T30	LRXLDQ1521J_-B_-T30	LRXLDQ1573_-B_-T30
LRXLDQ1521_-B_-T35	LRXLDQ1521J_-B_-T35	LRXLDQ1573_-B_-T35
LRXLDQ1521_-B_-T40	LRXLDQ1521J_-B_-T40	LRXLDQ1573_-B_-T40

### Quick Ship Items

---

LRLDQ1521W-L06-B20-Txx	LRLDQ1521JW-L06-B20-Txx	LRXLDQ1521W-L06-B20-Txx	LRXLDQ1521JW-L06-B20-Txx
LRLDQ1521W-L06-B40-Txx	LRLDQ1521JW-L06-B40-Txx	LRXLDQ1521W-L06-B40-Txx	LRXLDQ1521JW-L06-B40-Txx
LRLDQ1521W-L06-B50-Txx	LRLDQ1521JW-L06-B50-Txx	LRXLDQ1521W-L06-B50-Txx	LRXLDQ1521JW-L06-B50-Txx

### Caution

---

LITON recommends use of surge protectors on the power entering LED Housings. Surge damage is not covered by warranty. (+1KV). Fixtures must be grounded in accordance with national, state and/or local electrical codes. Failure to do so may result in serious personal injury.

### Warranty

---

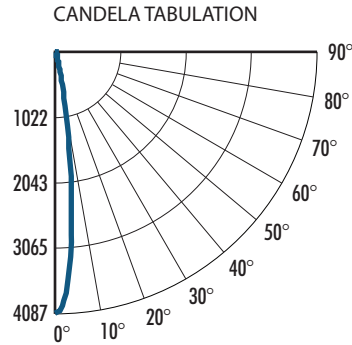
Covered by a 5-Year Warranty to be free of defects in materials and craftsmanship. Recommended for applications where ambient temperatures do not exceed 35°C. Installations exceeding this temperature will result in reduced LED lamp life and a voided warranty.

## PHOTOMETRY - DOWNLIGHT & ADJUSTABLE (Data also applies for LRLDQ1521J, LRXLDQ1521, LRXLDQ1521J)

### LRLD1521W-B15-T40 (15°, 4000K)

System Power:	12.4W
Test Date:	07/2025
Beam Angle 50%:	14.5°
Field Angle 10%:	25.9°
Color Temperature:	3941K
CRI:	93.8
Lumens Delivered:	404
CBCP:	5250
Power Factor:	0.99

MULTIPLIERS	
TRIM FINISH	
Matte Gold :	1.01
Black :	0.97
<b>White :</b>	<b>1.00</b>
LUMENS	
-C020 (600lm, 8W) :	0.74
<b>-C030 (1000lm, 12W) :</b>	<b>1.00</b>
CCT	
1800K-3000K :	0.62
2700K :	0.91
3000K :	0.94
3500K :	0.97
<b>4000K :</b>	<b>1.00</b>
LENSES	
-LVR :	0.71
-SFL :	0.88
-MPL :	0.80
-RL-15 :	0.13
-GL-15 :	0.20
-BL-15 :	0.36

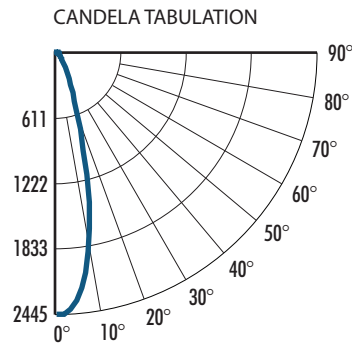


FOOTCANDLE DISTRIBUTION		
Height	Beam Diameter	FC
10.0'	2.38'	40.87
15.0'	3.58'	18.16
20.0'	4.77'	10.22
25.0'	5.96'	6.54
30.0'	7.15'	4.54
35.0'	8.35'	3.34

### LRLD1521W-B20-T40 (20°, 4000K)

System Power:	12.4W
Test Date:	07/2025
Beam Angle 50%:	21.5°
Field Angle 10%:	39.1°
Color Temperature:	3941K
CRI:	93.8
Lumens Delivered:	767
CBCP:	4670
Power Factor:	0.99

MULTIPLIERS	
TRIM FINISH	
Matte Gold :	1.01
Black :	0.97
<b>White :</b>	<b>1.00</b>
LUMENS	
-C020 (600lm, 8W) :	0.74
<b>-C030 (1000lm, 12W) :</b>	<b>1.00</b>
CCT	
1800K-3000K :	0.62
2700K :	0.91
3000K :	0.94
3500K :	0.97
<b>4000K :</b>	<b>1.00</b>
LENSES	
-LVR :	0.71
-SFL :	0.88
-MPL :	0.80
-RL-15 :	0.13
-GL-15 :	0.20
-BL-15 :	0.36



FOOTCANDLE DISTRIBUTION		
Height	Beam Diameter	FC
10.0'	4.71'	24.45
15.0'	7.06'	16.98
20.0'	9.42'	9.55
25.0'	11.77'	6.11
30.0'	14.13'	4.24
35.0'	16.48'	3.12

2025.07.07

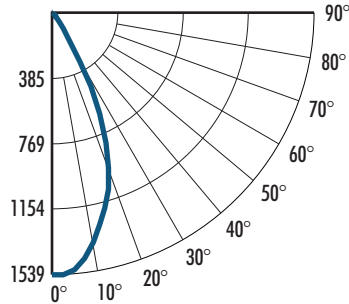
## PHOTOMETRY - DOWNLIGHT & ADJUSTABLE *(Data also applies for LRLDQ1521J, LRXLDQ1521, LRXLDQ1521J)*

### LRLD1521W-B40-T40 (40°, 4000K)

System Power:	12.4W
Test Date:	07/2025
Beam Angle 50%:	41.2°
Field Angle 10%:	62.8°
Color Temperature:	3941K
CRI:	93.8
Lumens Delivered:	920
CBCP:	2065
Power Factor:	0.99

MULTIPLIERS	
TRIM FINISH	
Matte Gold :	1.01
Black :	0.97
<b>White :</b>	<b>1.00</b>
LUMENS	
-C020 (600lm, 8W) :	0.74
<b>-C030 (1000lm, 12W) :</b>	<b>1.00</b>
CCT	
1800K-3000K :	0.62
2700K :	0.91
3000K :	0.94
3500K :	0.97
<b>4000K :</b>	<b>1.00</b>
LENSES	
-LVR :	0.71
-SFL :	0.88
-MPL :	0.80
-RL-15 :	0.13
-GL-15 :	0.20
-BL-15 :	0.36

CANDELA TABULATION



FOOTCANDLE DISTRIBUTION

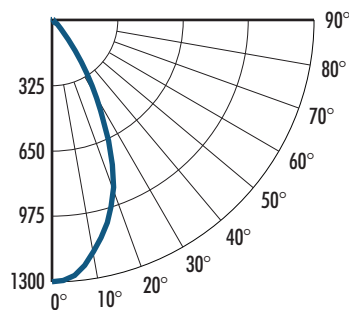
Height	Beam Diameter	FC
10.0'	8.59'	15.36
12.0'	10.31'	10.66
15.0'	12.89'	6.83
20.0'	17.19	3.84
25.0'	21.48'	2.67

### LRLD1521W-B50-T40 (50°, 4000K)

System Power:	12.4W
Test Date:	07/2025
Beam Angle 50%:	49.1°
Field Angle 10%:	71.9°
Color Temperature:	3941K
CRI:	93.8
Lumens Delivered:	958
CBCP:	1375
Power Factor:	0.99

MULTIPLIERS	
TRIM FINISH	
Matte Gold :	1.01
Black :	0.97
<b>White :</b>	<b>1.00</b>
LUMENS	
-C020 (600lm, 8W) :	0.74
<b>-C030 (1000lm, 12W) :</b>	<b>1.00</b>
CCT	
1800K-3000K :	0.62
2700K :	0.91
3000K :	0.94
3500K :	0.97
<b>4000K :</b>	<b>1.00</b>
LENSES	
-LVR :	0.71
-SFL :	0.88
-MPL :	0.80
-RL-15 :	0.13
-GL-15 :	0.20
-BL-15 :	0.36

CANDELA TABULATION



FOOTCANDLE DISTRIBUTION

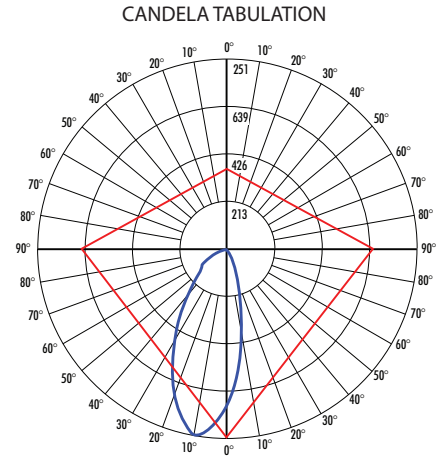
Height	Beam Diameter	FC
10.0'	9.45'	13.00
12.0'	11.34'	9.03
15.0'	14.18'	5.78
20.0'	18.91'	3.25
24.0'	22.69'	2.08

## PHOTOMETRY - WALL WASH (Data also applies for LRXLDQ1573B)

### LRLDQ1573B-T40-C030-HO (1000lm, 12W, Wall Wash, 4000K)

System Power: 12.4W  
 Test Date: 07/2025  
 Color Temperature: 3941K  
 CRI: 93.8  
 Lumens Delivered: 570  
 CBCP: 846  
 Power Factor: 0.99

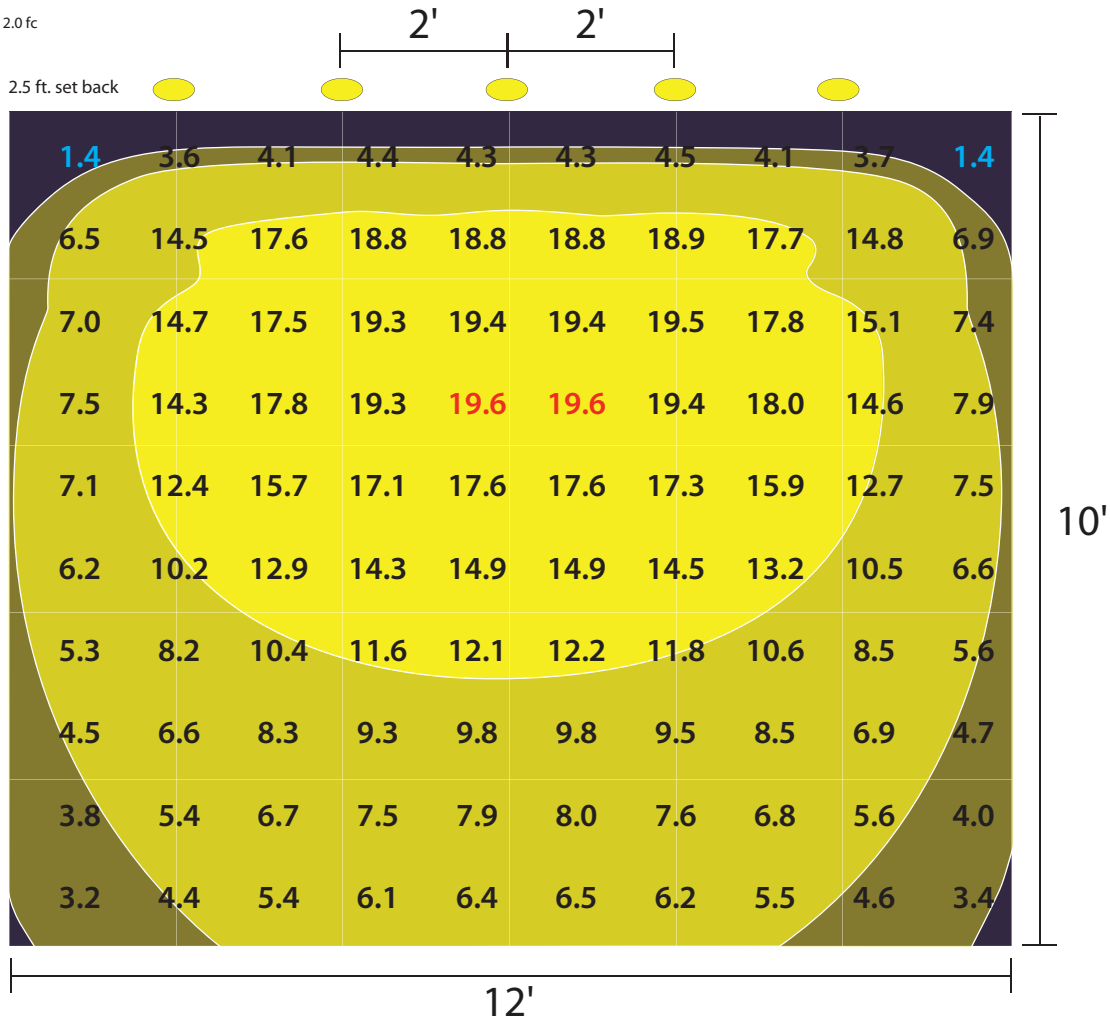
MULTIPLIERS	
TRIM FINISH	
Matte Gold :	1.01
Black :	0.97
<b>White :</b>	<b>1.00</b>
LUMENS	
-C020 (600lm, 8W) :	0.74
<b>-C030 (1000lm, 12W) :</b>	<b>1.00</b>
CCT	
1800K-3000K :	0.62
2700K :	0.91
3000K :	0.94
3500K :	0.97
<b>4000K :</b>	<b>1.00</b>



## PERFORMANCE DATA

### LUMINAIRE SPACED 2.5' FROM WALL

#### Footcandles On Wall



2023.11.14