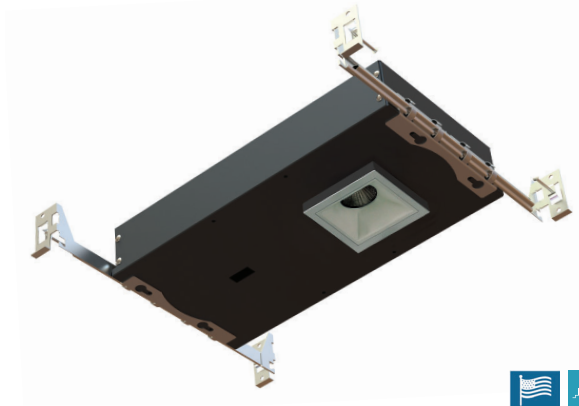
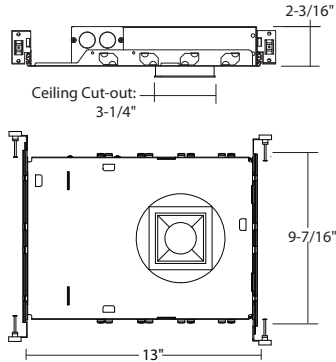


LSHQLD2: 2.5" SUPER-SHALLOW FRAME

NEW CONSTRUCTION (SQUARE) 1000LM-2600LM (10W - 30W)

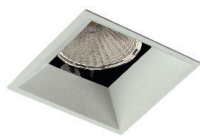
- For Super-Shallow 2-1/8" ceilings
- Small 2.5" aperture
- Fits Square Trims



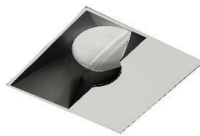
ORDERING : LSHQLD215C35-B60UE-DUN-T30-C90/LRQ2521 WW

Frame	Lumen	Beam Spread ¹	Driver	Color Temperature	Options	Reflector	Reflector Finish	Ring Finish	Rating	Accessories
Frame			Beam Spread			Driver			Color Temperature	
2.5" Super-Shallow	LSHQLD2	25° Narrow Flood	-B25	Non-Dimming	Blank	2700K (90CRI)	-T27			
Lumen (Nominal Delivered)		40° Flood	-B40	5%, 120V/277V, 0-10V, ELV, Triac Dimming	UE-DUN	2700K (97CRI)	-T27-C97			
1000lm (10W)	10C25	60° Wide Flood	-B60			3000K (90CRI)	-T30			
1000lm (10W) IC Rated	10C25-IC	90° Very Wide Flood	-B90			3000K (97CRI)	-T30-C97			
1300lm (15W)	15C35	Options				3500K (90CRI)	-T35			
1300lm (15W) IC Rated	15C35-IC	Trimless Wood	-WD			4000K (90CRI)	-T40			
2000lm (20W)	20C50									
2600lm (30W)	30C70									

TRIM OPTIONS



LRXQ2521
Flangeless
Downlight



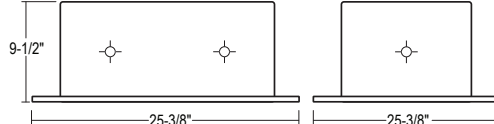
LRXQ2573
Flangeless
Wall Wash

Reflector	Reflector Finish	Ring Finish	Rating	Accessories ³
Flangeless Downlight	Matte White	White	None	Diffuse Lens
Flangeless Wall Wash	Specular Black	Black		
	Specular Clear			
	Specular Graphite			
	Satin Haze			
	Matte Gold			

OPTIONAL ACCESSORY

LFB2012

Fire Barrier



¹ LRXQ2573 Reflector is only available in Matte White (W), Specular Black (B), and Satin Haze (S) finish.

³ Diffuse Lens -FR not available for LRXQ2573.

SPECIFICATION

Applications

Perfect for ambient and task downlighting in low to medium height ceilings and high-end residential and commercial applications with shallow plenums.

Housing

.05" aluminum housing with baked enamel finish, suitable for new construction installations. Designed to secure to existing sheet rock or panel ceilings up to 3/4" thick.

Mounting

Housing suitable for new construction installations, supplied with (2) 24" adjustable hanger bars. Hanger bars equipped with nail-less install 3/4" serrated barbed studs and with captive nails, for faster and easier secure mounting in wood joists. Set-screws lock into position and prevent shifting after installation. Earthquake structural cable compatible for drop panel ceiling or any other mounting that requires direct support from structural ceiling.

Trim Ring

Friction clips hold square trim secure to Housing Frame.

Thermal Management

Effective thermal dissipation facilitated by integral cast-aluminum, heat sink design for maximum heat rejection to provide long LED life.

Electrical Components

Dimming - Specify UE-DUN option for 120V/277V 0-10V, ELV Triac Dimming.

Certifications and Listings

ETL/cETL listed to UL1598 and UL8750. Suitable for dry and damp locations. NYC approved: Calendar #41937.

Caution

Fixtures must be grounded in accordance with national, state and/or local electrical codes. Failure to do so may result in serious personal injury.

Warranty

Covered by a 5-Year Warranty to be free of defects in materials and craftsmanship. Recommended for applications where ambient temperatures do not exceed 35°C. Installations exceeding this temperature will result in reduced LED lamp life and a voided warranty.

Optional Accessory

LFB2012 - Fire Barrier. This galvanized welded steel enclosure is rated for one-hour resistance to active fire. LFB2012 enclosure is designed for use with both existing and new installation of Recessed Luminaires. Fulfills the required 1-hour-fire-resistance-rating, to operate as an active fire wall, with less effort.