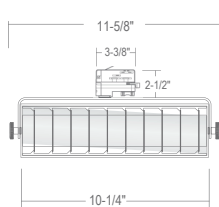
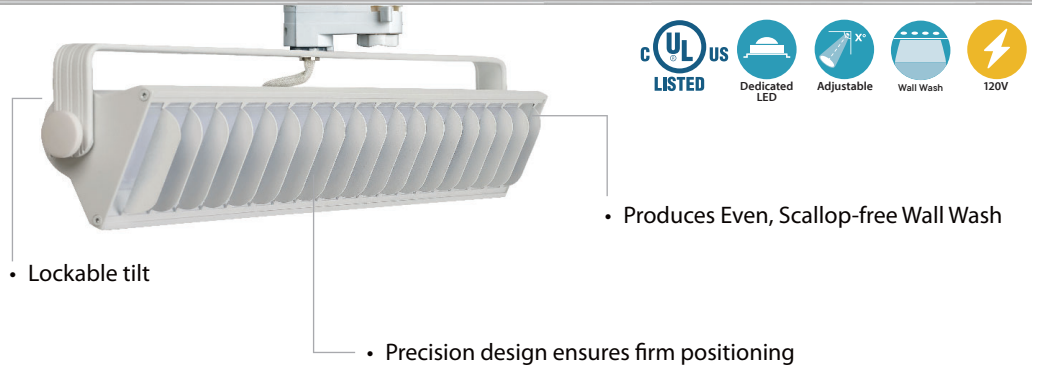
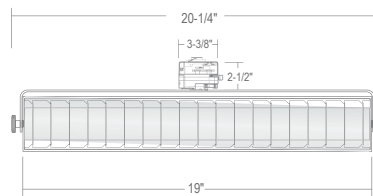
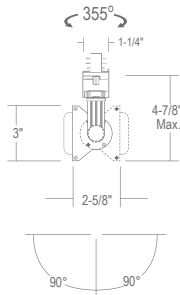


LTD251 : LINEAR LED WALL WASH

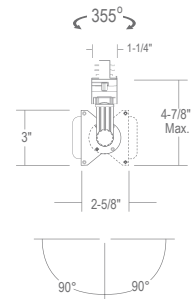
1400LM - 2600LM (20W - 40W) - 2 CIRCUIT / 2 NEUTRAL TRACK LUMINAIRES



LTD25120



LTD25140



ORDERING : LTD25120B-TS30-LVR

Fixture		Finish		Color Temperature		Accessories	
Fixture		Finish		Color Temperature		Accessories	
1400lm 20W	LTD25120	Black	B-DLV	3000K	-TS30	No Louver	Blank
2600lm 40W	LTD25140	White	W-DLV	3500K	-TS35	Louver	-LVR
				4000K	-TS40		
				ColorSelect	-TS354		
				3000K/3500K/			
				4000K			

COMPATIBLE ITEMS

LP20 Recessed Track **LP20** Surface Track



SPECIFICATION**Application**

High-output EcoTrack LED trackhead features a sleek, rectangular, low-profile design that combines soft yet powerful illumination with maximum energy efficiency. Perfect for applications in retail stores, boutiques and other areas where adjustable illumination is required and ceilings may be high or distances may be long. Functions both as a flood and as an even, scallop-free wall wash to illuminate signage, displays and merchandise. Provides up to 5 times the lumen output of traditional halogen lamp sources.

Mounting:

Factory Installed specification grade 2-circuit 2-Neutral track connector

Lumen Maintenance:

Minimum 50,000 hours L70 life based on ANSI TM-21 calculations from LM80 standardized test results.

Electrical Components

Thermal Management:

Effective thermal dissipation facilitated by integral aluminum heat sink for maximum heat rejection to provide long LED life.

Driver:

Electronic Direct Current U.L. recognized driver mounted away from LED Array for cool operation and end-of-life modularity. Comes standard with 120VAC input.

Color Temperature:

Available in 3500K (90 CRI), 4000K (90 CRI), and TS354 ColorSelect 3000K/3500K/4000K (90 CRI).

Finishes

High quality powder coat finish for maximum durability. Available in Black and White.

Control

Works with standard electronic low voltage (ELV) dimmers. Factory qualified for use with Lutron brand dimmers: SELV300P, DVELV300P, MAELV-600 and NELV-450.



LTD251 : LINEAR WALL WASH

1400LM - 2600LM (20W - 40W) - 2 CIRCUIT / 2 NEUTRAL TRACK LUMINAIRES

SPECIFICATION (Continued)

Certifications and Listings

cETLus/UL listed. Suitable for dry locations only

Aiming Mechanism

Precision machined aiming mechanism allows 90° vertical adjustment.

Caution

Fixtures must be grounded in accordance with national, state and/or local electrical codes. Failure to do so may result in serious personal injury.

Warranty

Covered by a 3-Year Warranty to be free of defects in materials and craftsmanship. Recommended for applications where ambient temperatures do not exceed 35°C (95°F), installations exceeding this temperature will result in reduced LED lamp life and avoided warranty.