

LTDP3 : CYLO CYLINDER

LED PENDANT HEAD 800LM - 1400LM (10W - 20W)

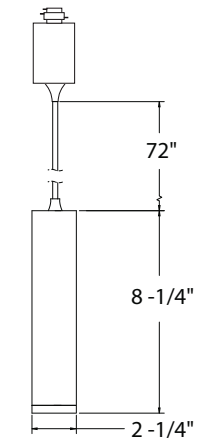


- "Zero Percent Dimmin Standard" Smoothly Dims to completely off with Standard Incandescent Dimmers

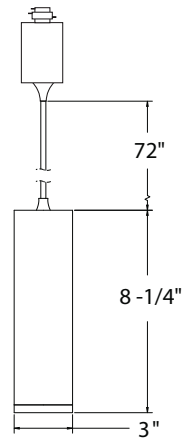
• Sleek Unobtrusive Design

• Concealed heat sink and LED driver

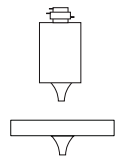
• Precision design ensures firm positioning



LTDP310



LTDP320



Hardware is included for track and canopy mount!

ORDERING : LTDP310B-B15-TS354-LVR-2C2N

Fixture	Finish	Control	Beam Spread	Color Temperature	Accessories	Connector Options
Fixture	Finish	Control	Beam Spread	Color Temperature	Accessories¹	Connector Options
2" Cylo Cylinder 800lm LTDP310	Black B	2-Wire/Incandescent/ELV Dimming (120V) Blank	15° Spot -B15	2700K (90 CRI) -T27	None Blank	1CCT/1NT Connector Blank
3" Cylo Cylinder 1400lm LTDP320	White W		25° Narrow Flood -B25	3000K (90 CRI) -TS30	Louver -LVR	2CCT/2NT Connector -2C2N
			425° Flood -B45	3500K (90 CRI) -TS35	Red Lens /L39²	3CCT/1NT Connector -3C1N
			80° Wide Flood -B80	4000K (90 CRI) -TS40	Yellow Lens /L40²	
				ColorSelect -TS354	Blue Lens /L41²	
				3000K/3500K/4000K (90 CRI)	Amber Lens /L42²	
					Green Lens /L43²	
					Lens with Internal Louver Filter /L48²	
					Micro-Prismatic Spread Lens /L53²	
					Shoot -SNT	
					Glow Ring -GLOW	
					Barn Door -BD	

¹ Accessories ship with Accessories Cap which replaces threaded Lens Cap. (Accessories cannot be combined.)

² Only available for LTDP310

Note: Wattage limitations on compatible items must be met.

COMPATIBLE ITEMS



LP
Track Channel
(1 CCT)



LPC
Track Channel
(2 CCT/1NT)



PT57
Plug-in Clamp
Adapter

2025.11.13

SPECIFICATION

Application

Architecturally styled LED Cylo 2" Cylinder Pendant features a durable steel body, futuristic alloy heat sink, hidden wiring and internal adjustment mechanism for a clean unobtrusive look. It's small size makes it ideal for retail, commercial and residential applications requiring stylish design and true MR16 performance.

Connector

LITON track fixtures come standard with 3-Wire H-Type track connections. Fixture is factory preset for installation on single-circuit track. J-Type and L-Type connections are available with extended lead times - consult factory. Field adjustable cord to 72".

Mounting

Comes with connector hardware to mount to cct/1nt track and 2cct/1nt H-Type Track as well as hardware to mount fixture to a canopy mount. Electrical Assembly required with (Blank) option. For prewired, order (-TRK) option.

Driver

Electronic Constant Current driver integrally mounted in fixture casing.

Control

Works with standard incandescent dimmers and ELV Dimmers. Factory qualified for use with Luton brand dimmers: S600PR, DVSCCL-153P & DV600PR as well as Leviton IP106-600W.

Lumen Maintenance

Minimum 35,000 hours L70 life based on ANSI TM-21 calculations from LM80 standardized test results.

Thermal Management

Effective thermal dissipation facilitated by integral aluminum heat sink for maximum heat rejection to provide long LED life.

Safety Labels

ETL/CETL listed. Suitable for dry locations only. UL listed.

Warranty

Effective thermal dissipation facilitated by integral aluminum heat sink for maximum heat rejection to provide long LED life.

Accessories

Black Hexcell Louver (LVR), Red Lens (L39), Yellow Lens (L40), Blue Lens (L41), Amber Lens (L42), Green Lens (L43), Lens with Internal Louver Filter (L48), Micro-Prismatic Spread Lens (L53), Glow Ring (-GLOW), Snoot (SNT), and Barn Door (-BD). Accessories ship with Accessories Cap which replaces threaded Lens Cap.