

**APPLICATION**

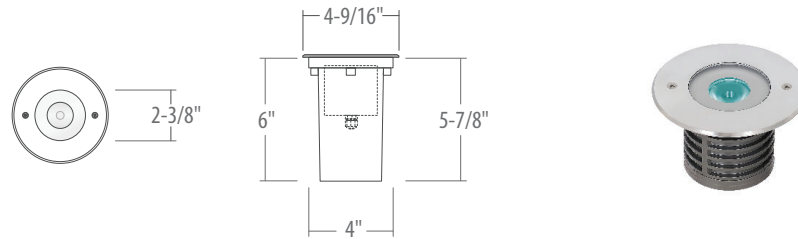
Small scale recessed in-grade luminaire. Designed for wall washing, and uplighting trees and landscape applications. Recommended for retail, modern residential, hospitality and entertainment installations. RGBW design allows fine-tuned pastel colors, saturated hues without sacrificing illumination brightness. DMX control option allows the use of DMX512 Control Systems to individually control and change colors,

set looks, and add lighting effects which can affect moods, feelings and atmosphere. 316 marine grade stainless steel corrosion resistance ring. Drive Over Rated (5,700 lb Limit).

- 6W 158 Max. Lumen
- DMX direct via data enabler
- Multiple beam spreads
- LED Die Colors: RGBW
- Static Colors Available

- Using InternaMix™ proprietary technology, colors are efficiently blended together through an internal mixing chamber. The one-color output reduces unsightly views of isolated rainbow like striations.
- Smooth and flicker-free dimming of all colors down to 1% using patented color mixing and dimming technologies developed at Philips Color Kinetics®
- 5-Year Warranty

**DIMENSIONS**



**ORDERING** – Example: SG3-RGBW-1R-B60

\_\_\_\_\_



**HOUSING**

**SG3-RGBW-1R**

**BEAM SPREAD**

**Blank:** 25° Optic  
**-B60:** 60° Optic

**ACCESSORIES**

96W 120V/277V Power Supply with Junction Box LD533V024-1277-96-JB

- 120V-277V Input
- Electrical Junction Box Included
- Each power supply energizes up to 2 lights.



4 Channel 200W DMX Data Enabler SDE24V24RGBW-400

- 12V or 24 DC Input
- cETLus listed
- DmX-512 (1990) & Pre-Programmed Control



---

## SPECIFICATIONS

### OUTPUT

---

Beam Angle: 25° & 60°

---

Lumens: 158 Max. Lumen

---

Efficacy (lm/W): 26 lm/W

---

LED Channels: Red/Green/Blue/White

### ELECTRICAL

---

Input Voltage: 24V powered by 120-277V Power Supply

---

Power Consumption: 6W

### CONTROL

---

Interface: DMX direct via data enabler

---

Control System: DirectDMX Color Control. Color controlled with USITT DMX512A Standard Protocol to work with Coloronix or 3rd Party DMX Systems.

---

LED Die Colors: Red (620-635nm), Green (520-535nm), Blue (450-465nm) and Neutral White (4000k)

---

Static Color Available: All Standard Colors, Consult Factory.

---

Dimming: Smooth and flicker-free dimming of all colors down to 1% using Patented Color Mixing and Dimming technologies developed at Philips Color Kinetics<sup>®</sup>

---

Wireless Bluetooth Control: Bluetooth control via wireless. Call up standard colors or shows. One Bluetooth enabler per zone. Not recommended for large scale installations or where programming requires intensive dynamic color syncing across fixtures.

---

Color Mixing: Using InternaMix<sup>™</sup> proprietary technology, colors are efficiently blended together through an internal mixing chamber. The one-color output reduces unsightly views of isolated Red, Green and Blue Diodes for a seamless rainbow-free appearance.

### LUMEN MAINTENANCE

---

L70 Life: 50,000 Hours for ambient temperatures under 95°F.

### PHYSICAL

---

Dimensions (Height x Width x Length): 6" x 4" x 4-9/16 "

---

Housing Material: Constructed of one piece high grade die-cast aluminum alloy and is secured to the outer block-out housing by stainless steel screws. and a high grade die-cast aluminum alloy trim with a high corrosion resistant powder coat finish seals a clear tempered glass lens with a silicone gasket to the housing.

Note: Fixture is not rated for submersion. Proper drainage must be provided.

Faceplate: Machined and beveled round 316 marine grade stainless steel corrosion resistance ring faceplate. Installed by two (2) captive, tamper resistant, stainless steel screws

---

Weight: 3.1 lbs.

---

Lens: Tempered Glass

---

Connections: Standard wiring for power supply, RJ45 for DMX in/out connection points.

---

Temperature Range: -4°F - 113°F Ambient

### CERTIFICATION

---

Complies to UL1598 and ANSI/UL 8750. IP67

### WARRANTY

---

5-Year Warranty