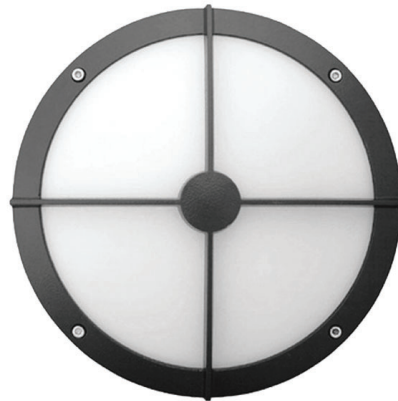
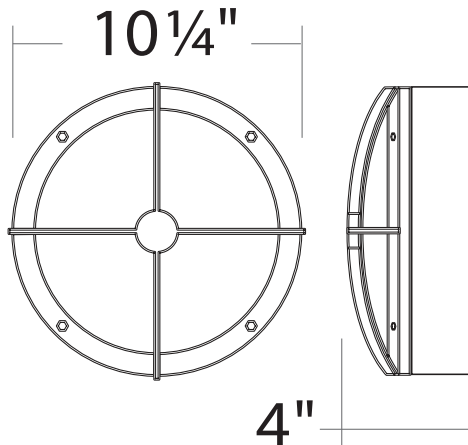


# WS730S : 10" ROUND BULLS-EYE

WALL LUMINAIRE - OUTDOOR SURFACE MOUNT  
600LM-1500LM (10W/20W)



- Cold Weather Operation (-40°F)
- Glare-Free Soft Diffused Illumination
- Impact Resistant Diffusing Lens
- Tamper Proof Hardware
- 80+ CRI Light Quality
- ADA Compliant
- IP65 Rated

## ORDERING : WS734SB-L06-T30

### WS734S

Fixture      Finish      Lumens      Options      Color Temperature

Finish		Lumens		Options		Color Temperature	
Black	<b>B</b>	10W/600lm	<b>-L06</b>	120V	<b>Blank</b>	3000K	<b>-T30</b>
White	<b>W<sup>1</sup></b>	20W/1500lm	<b>-L15</b>	120V/277V	<b>UE</b>	4000K	<b>-T40</b>
Silver	<b>S<sup>1</sup></b>			120V/277V	<b>UE-D10</b>	5000K	<b>-T50<sup>1</sup></b>
Bronze	<b>BZ<sup>1</sup></b>			0-10 Dimming		Color Changing	<b>-RGBW<sup>2</sup></b>
				Remote Emergency Backup	<b>UE-EM</b>		

<sup>1</sup> Extended Lead Time.  
<sup>2</sup> Consult Factory.

# WS730S : 10" ROUND BULLS-EYE

## WALL LUMINAIRE - OUTDOOR SURFACE MOUNT

### 600LM-1500LM (10W/20W)

## SPECIFICATION

### Application

---

Surface Wall Sconce Luminaires are ideal for indoor or outdoor applications in residential, commercial, or architectural installations that require the fixture to integrate into the design of the structure. The Wall Sconce can be used to direct and guide as well as supply lighting for security.

### Housing

---

Constructed from one piece of high grade die cast aluminum with a powder coat finish. Includes an integral wiring compartment and silicone gasket. One (1) power entry hole (1/2-14 NPSM) provided.

### Faceplate

---

Round cross bar one-piece high grade die cast aluminum with a high corrosionresistant powder coat finish and semi-translucent UV stabilized polycarbonate opal lens for soft diffused glare-free illumination. Faceplate is secured to housing by four (4) captive, tamper resistant, stainless steel screws.

### Through Wiring

---

A maximum of four (4) No. 12 AWG conductors (plus ground wire).

### Listing

---

ETL / cETL Listed, suitable for wet locations and for all types of construction, covered ceiling mount. ADA compliant when installed per ADA Requirements. Assembled in USA.

### Electrical

---

AC 50/60Hz Electronic Direct Current Class 2 driver integrally mounted. Power Factor > 0.90. Accessible from above or below ceiling. Suitable for cold weather applications down to -40°C/-40°F.

### Emergency Options

---

Emergency LED Battery Back-Up available, remotely mounted adjacent to housing by installer. When AC power fails, the device immediately switches to the emergency mode, operating the LEDs for a minimum of 90 minutes. Remote test switch, plate cover and junction box included.

### Lumen Maintenance

---

Minimum 50,000 hours L70 life based on ANSI TM-21 calculations from LM80 standardized test results. See ordering guide for delivered lumens.

### Dimming

---

0-10V dimming option (-D10) works with most 5-Wire 0-10V dimmers. Factory qualified for use with Leviton IP710-DLX and Lutron NTFTV-WH.

### Warranty

---

Covered by a 5-Year Warranty to be free of defects in materials and craftsmanship.

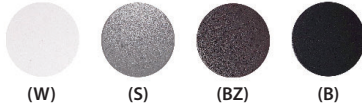
# WS730S : 10" ROUND BULLS-EYE

WALL LUMINAIRE - OUTDOOR SURFACE MOUNT  
600LM-1500LM (10W/20W)

## SPECIFICATION (Continued)

### Finish

---



Available in Black, White, Silver and Bronze.

### Lumens

---

Available in 10W/ 600lm and 20W/ 1500lm.

### Color Temperature

---



Available in 3000K, 4000K, 5000K and Color Changing (Consult Factory).

### LED Details

---

#### 10W 600 Lumen Package

Color Rendering Index (CRI): 80

Color Temperature: 3,000K

Lamp Equivalent: (1) 26W CFL, 150W A-Lamp

#### 20W 1500 Lumen Package

Color Rendering Index (CRI): 80

Color Temperature: 3,000K

Lamp Equivalent: (1) 42W CFL, 150W A-Lamp.

# WS730S : 10" ROUND BULLS-EYE

## WALL LUMINAIRE - OUTDOOR SURFACE MOUNT

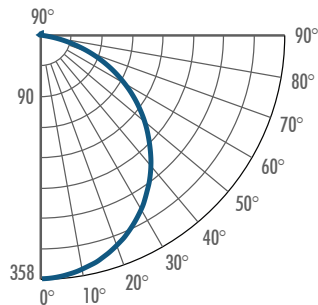
### 600LM-1500LM (10W/20W)

#### PHOTOMETRY

##### WS7-L06-T40 - 600lm - 4000K

System Power	:12.8W	Multipliers	
Test Date	:7/2016	5000K	1.07
Beam Angle 50%	:110.4°	3000K	0.97
Field Angle 10%	:157.9°		
Color Temperature	:3,876K		
CRI	:85.8		
R9 Value	:31.0		
Lumens Delivered	:989Lm		
CBCP	:358cd		
Power Factor	:0.99		

##### CANDELA TABULATION



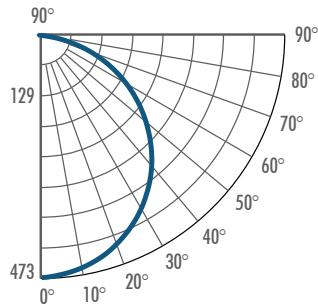
##### FOOTCANDLE DISTRIBUTION

Height	Beam Diameter	FC
3.3'	9.4'	33.3
6.6'	18.9'	8.3
9.8'	28.3'	3.7
13.1'	37.7'	2.1
16.4'	47.2'	1.3

##### WS7-L15-T40 - 1500lm - 4000K

System Power	:16.9W	Multipliers	
Test Date	:7/2016	5000K	1.07
Beam Angle 50%	:112.3°	3000K	0.97
Field Angle 10%	:160.2°		
Color Temperature	:3795K		
CRI	:85.8		
R9 Value	:27.0		
Lumens Delivered	:1341Lm		
CBCP	:473cd		
Power Factor	:0.99		

##### CANDELA TABULATION



##### FOOTCANDLE DISTRIBUTION

Height	Beam Diameter	FC
3.3'	9.8'	43.9
6.6'	19.6'	11.0
9.8'	29.4'	4.9
13.1'	39.1'	2.7
16.4'	48.9'	1.8