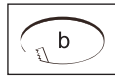
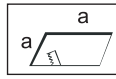


### INSTALLATION INSTRUCTIONS

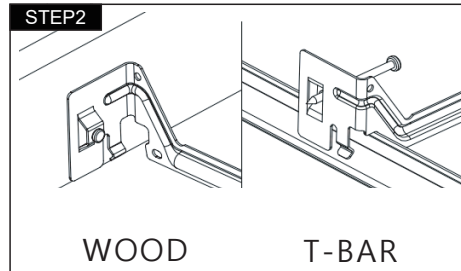
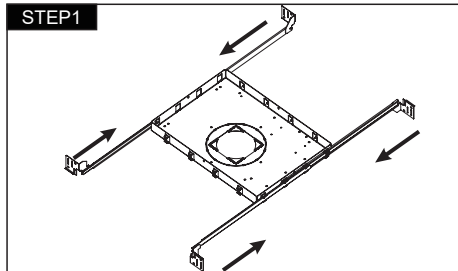
1. The fixture is for LED.
2. Before installation, make sure that the power supply is off.
3. Follow the steps as shown below for installation.
4. After finishing every step, tighten the screws, have the fixture fixed, then connect the power supply.
5. It is recommended that these products are installed by a qualified electrician.
6. The light source in this luminaire should be replaced by the manufacturer or its service agent or similarly qualified person.
7. Under no circumstances should the luminaire be covered by thermal insulation pads and similar materials.
8. Install per national installation and accident prevention regulations.

#### Recessed Trim



	LRLD26	LRLD35
a	3-1/8" 80mm	3-15/16" 100mm
b	3-1/8" 80mm	3-15/16" 100mm

#### NON IC Installation:



#### ⓐ Recessed Trim

