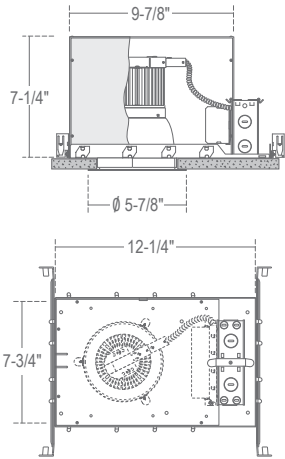
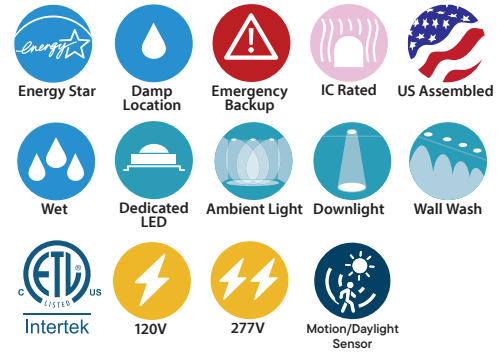


CH4IC : 4" C·SERIES

4" TYPE IC DOWNLIGHT NEW CONSTRUCTION 1000LM - 3500LM (8W-30W)



Ceiling Cut-Out: 4-7/8"
 Ceiling Thickness: 1" Max.



- IC rated housing
- Twist and lock reflector for quick access to LED lamp array
- Heavy-duty self-flanged reflector
- Soft even lumen distribution
- No visible screws or hardware

ORDERING : CH410ICUE-D10-EMAC/CR4L17SW-EMA-T30

[Click for Full Specification Details](#)

CH4xxIC	Control	Emergency Options	J-Box	Reflector	Reflector Finish	Reflector Option	CCT	Options
Housing ¹	Options			Reflector ¹	Reflector Finish	Reflector Option	CCT	Options
1000lm (8W)	CH408IC	[Options]		/CR4L17	Satin Haze Reflector/ White Finish	None	2700K (84 CRI) -T27	None
1800lm (18W)	CH410IC	[Options]		/CR4L17	White Reflector/ White Finish	Integral EM Switch	3000K (84 CRI) -T30	4.5" Ceiling Thickness
2300lm (22W)	CH418IC	[Options]		/CR4L17	All Black		3500K (84 CRI) -T35	
2700lm (28W)	CH428IC	[Options]		/CR4L17	Clear Specular Reflector/White Finish		4000K (84 CRI) -T40	
3000lm (28W)	CH429IC	[Options]		/CR4L30	All Satin Haze Reflector Finish		5000K (84 CRI) -T50	
3500lm (30W)	CH430IC	[Options]		/CR4L30				
	Options							
	Control ²	Emergency Options ⁸	J-Box					
	0-10V Dimming	None	None					
	UniDim™ 0-10V, TRIAC/ELV Dimming	UE-D10	Blank					
	TRIAC/ELV Dimming (120V)	UE-DUN	10W Emergency Battery					
	Lutron Hi-Lume	-DIN	Full Power Emergency Inverter					
	Lutron EcoSystem	UE-DHL	Full Power Emergency Inverter (347V)					
	0-10V Dimming (347V)	UE-ECO	GTD Device					
	1%, 0-10V Dimming (1%)	-347-D10⁶						
	0-10V Dimming with 10W Emergency Backup	UE-D10P1						
	DMX Dimming with input via XLR5 (120V/277V)	UE-D10-EMA^{3,9}						
	DMX Dimming with input via RJ45 (120V/277V)	UE-DMXLR5						
	Athena Wireless Node (120V)	UE-DMXRJ45						
	Athena Wireless Node	-AWN						
	Occupancy Sensor (120V)	-AWN-OCC						
	UniSense - Remotely Mounted Motion/Photosensor (120V)	-SUN-RMT⁵						
	UniSense - Remotely Mounted Motion/Photosensor	-SUN-RMT-1227⁵						
	Casambi Wireless Dimming	-DCSM⁴						
	BubblyNet Wireless System	-DBNT⁴						
	Lutron Vive Wireless Dimming Module	-VIVE⁴						

¹ Housing must match corresponding Reflector in column to right.
² All drivers are 120V/277V unless otherwise noted.
³ (UE-D10-EMA) must be ordered with Integral EM Switch Option (-EMA).
⁴ Special Order.
⁵ (-SUN-RMT) sensor sent with mounting clips for existing ceiling applications.
⁶ (-347-D10) not available for CH408IC.
⁷ Check Wiring Diagrams.
⁸ All EM/EMAC/EMAC347/GTD must have access above ceiling.
⁹ UE-D10-EMA is not compatible with -EM or -EMAC or -EMAC347 or -GTD.

COMPATABILITY

VR800
 Outdoor Vandal Resistant Ceiling/Wall Kit

